



TheCaseSolutions.com

Number 1 in case studies solutions

MICROECONOMICS EXAM



Introduction

Microeconomics is that branch of economics which studies the behavior relating to resource utilization in making a choice for resource allocation or in pricing a product in a market. Examples of case studies into microeconomics are essential in the comprehension of reality-based application of these truths.



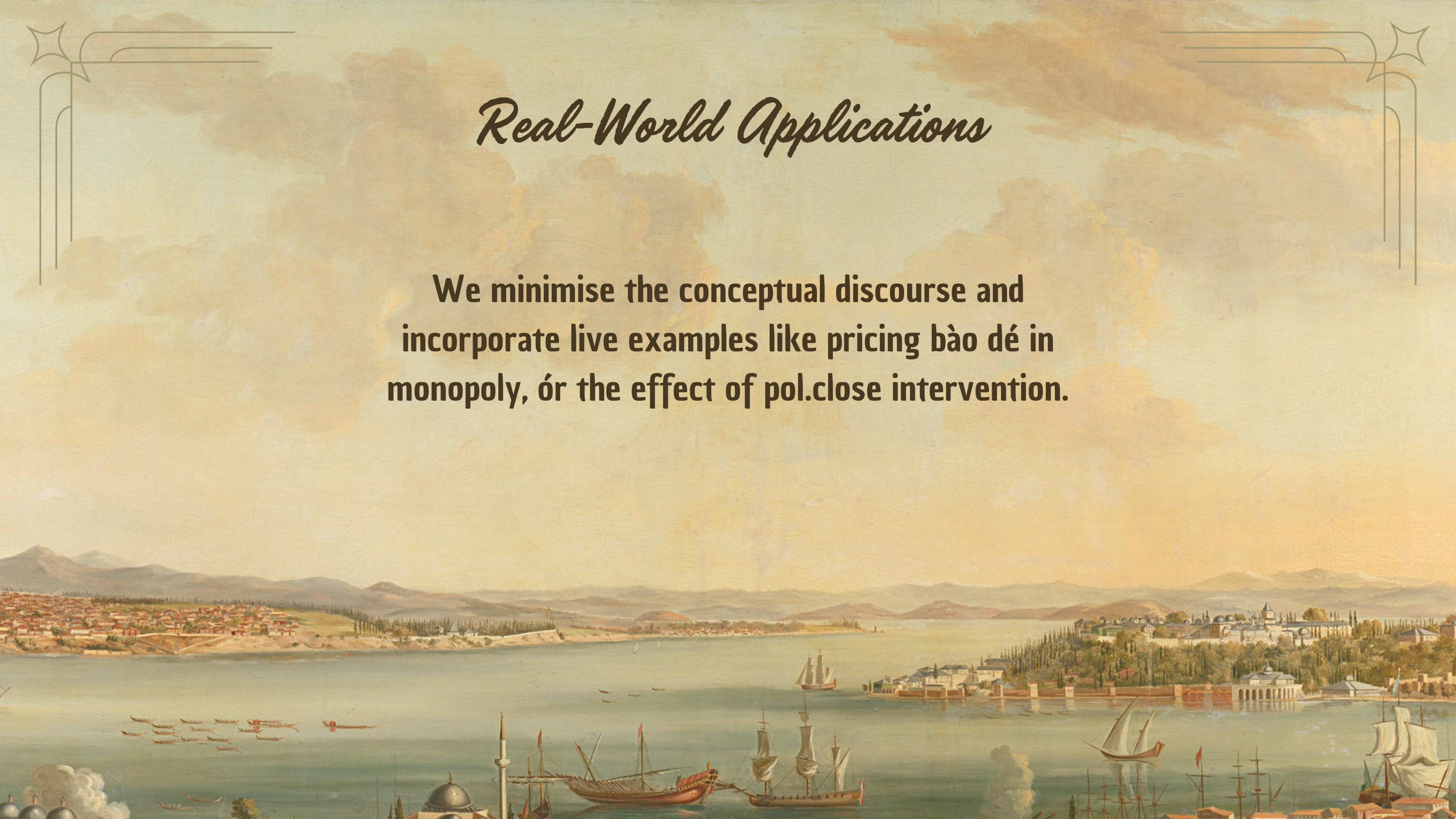
Case Analysis

A number of industries are ideal for illustrating theoretical ideas such as demand-supply analysis, market structures, price elasticity and cost-benefit analysis. They also encourage students to make some decisions they have to analyze situations and even interpret results.



Real-World Applications

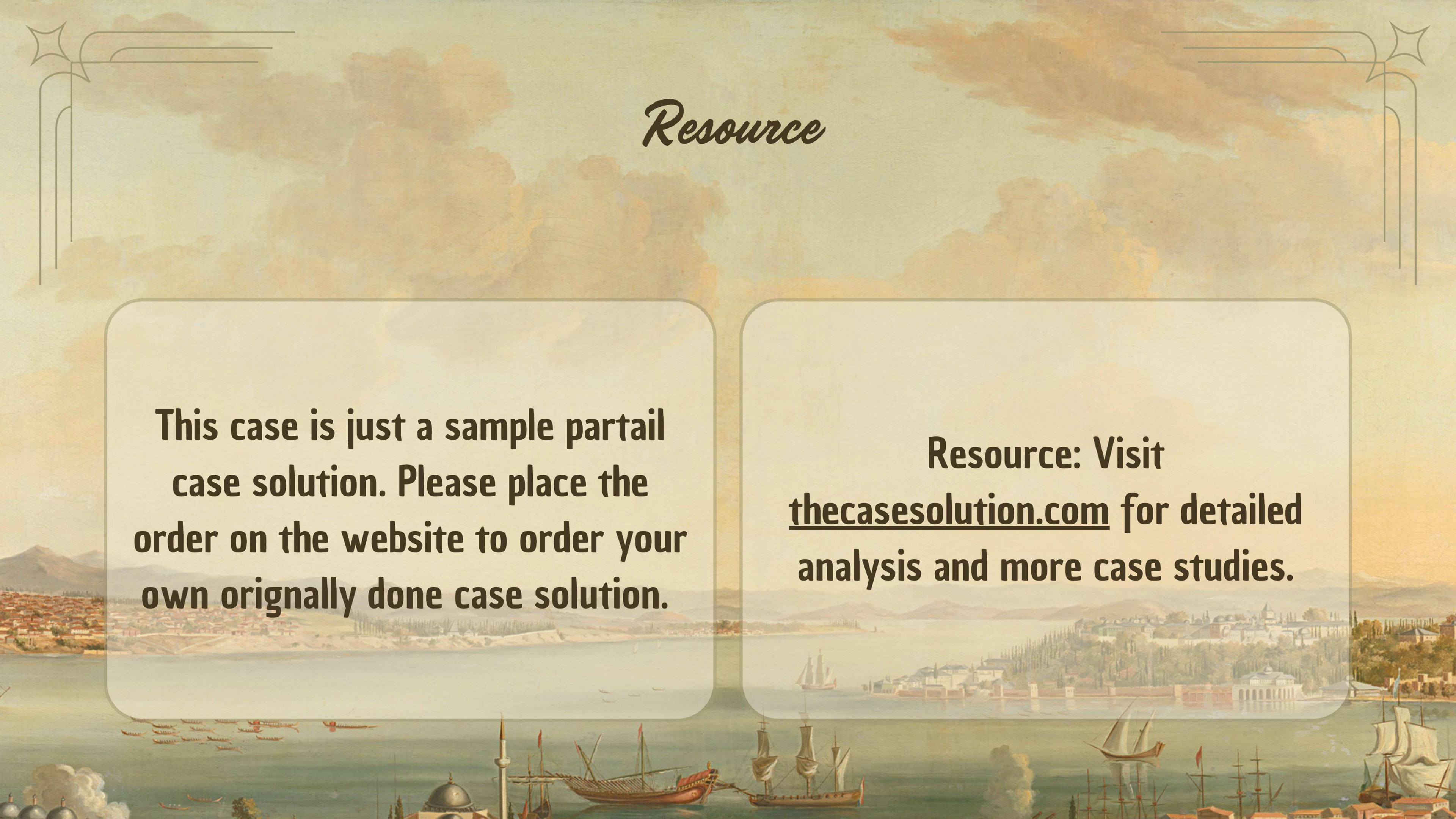
We minimise the conceptual discourse and incorporate live examples like pricing *bào dé* in monopoly, or the effect of pol.close intervention.



Conclusion

For all your study needs whether it is preparing for test or solving assignments, thecasesolutions.com is a solution provider of choice. We ensure when you use our Microeconomics Exam Case Solution you are well prepared and have clear understanding of core issues.



The background is a detailed historical painting of a harbor, likely the Bosphorus in Istanbul. In the foreground, several large wooden sailing ships with multiple masts and sails are visible. To the left, a small fleet of galleys is moving across the water. The middle ground shows a wide expanse of water with more ships in the distance. The background features a city with domed buildings and a large mosque with a prominent minaret, situated on a hill overlooking the water. The sky is filled with soft, golden clouds, suggesting a sunset or sunrise. Decorative line art with star motifs is present in the top corners.

Resource

This case is just a sample partail case solution. Please place the order on the website to order your own orignally done case solution.

Resource: Visit thecasesolution.com for detailed analysis and more case studies.