

Rutgers University and Housing



Looking at Community Issues in Camden and New Brunswick, and How to Solve them.



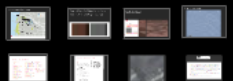
Allie Bittner
Joe Preen

Establishing Community Change

Camden



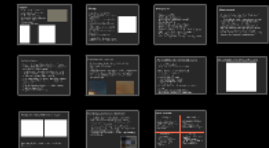
New Brunswick



Rutgers University



Background of New Brunswick, NJ



New Brunswick, Rutgers, and Housing



TheCaseSolution.Com

Rutgers University and Housing



Looking at Community Issues in Camden and New Brunswick, and How to Solve them.



Allie Bittner
Joe Preen

Establishing Community Change

Camden

New Brunswick



Rutgers University



Background of New Brunswick, NJ



New Brunswick, Rutgers, and Housing



TheCaseSolution.Com

Rutgers University and Housing

Looking at Community Issues in Camden and New Brunswick, and How to Solve them.



Allie Bittner
Joe Preen



New Brunswick

Background of New Brunswick, NJ

Location

- Located in Middlesex County, NJ
- Southern Border of Raritan River
- 40 Miles from NYC
- 60 Miles from Philadelphia
- Intersected by Route 1 and Route 1B.
- Exit 9 off of NJ Turnpike
- 5.8 square miles
- Known as the "Hub City"



History

- Settled in 1681. Named in 1714.
- Incorporated as Town in 1736; Chartered as City in 1784.
- "Kings Road." Centered along hub for travelers.
- Selected for site at Queen's College in 1766.
- 1810: Theological Seminary moved to New Brunswick.



Demographics

- Population: 56,910.
- Median Age: 23.5 years old.
- Median Household Income: \$38,435.
- Poverty Rate: 34.7%.
- 50% of Residents Identify as Hispanic.
- 69.5% U.S. Citizens (Nat Avg: 93%)
- 56.4% are Native Speakers of Non-Native Language

Rutgers University

Rutgers University Background

- The State University of New Jersey
- 3 Campuses: New Brunswick, Camden, Newark
- 68,942 Students
 - 49,359 Undergraduate
 - 19,583 Graduate
- New Brunswick: 50,146 Students
- Newark: 12,321 Students
- Camden: 6,475 Students
- 83% of Students are from New Jersey
- Rutgers primarily focuses on Research.

Rutgers - New Brunswick: History

- 1766 Queen's College Founded
- 1825: Renamed "Rutgers College."
- 1918: Douglass Women's College Founded
- 1945: State Legislature established Rutgers as the State University of New Jersey.
- 1959: Bond passed to expand higher education construction. Expanded campuses in New Brunswick and Piscataway.
- 1969: Livingston College Founded
- 1972: Rutgers became Co-Ed.
- 1981: Centralized Academic Departments
 - 4 Liberal Arts Colleges: Douglass, Livingston, Rutgers, and University.
- 2004: Reassessment/Merger of 4 Colleges



Rutgers, New Brunswick: Campus Overview

- 5 Campuses
 - Cook/Douglass/College Ave: New Brunswick
- Access by Bus System
- Students can live or attend classes in any of the 5 campuses.



Rutgers, New Brunswick- Demographics

- Largest Campus: 50,146 Students
 - 36,168 Undergraduate
 - 13,978 Graduate
 - 7,832 (Rutgers Biomedical and Health Sciences)
- 17 Schools and Colleges
 - Over 100 Undergraduate Majors
 - Over 200 Graduate Programs
- Facilities: All 5 Campuses
 - 2,685 Acres
 - 640 Buildings
- Housing:
 - 16,000 Resident Students
 - 136 Residence Halls
 - 44% Live On Campus
 - 56% Live Off Campus

Rutgers University Background

- The State University of New Jersey
- 3 Campuses: New Brunswick, Camden, Newark
- 68,942 Students
 - 49,359 Undergraduate
 - 19,583 Graduate
- New Brunswick: 50,146 Students
- Newark: 12,321 Students
- Camden: 6,475 Students
- 83% of Students are from New Jersey
- Rutgers primarily focuses on Research.

Rutgers- New Brunswick: History



- 1766 Queen's College Founded
- 1825: Renamed "Rutgers College."
- 1918: Douglass Women's College Founded
- 1945: State Legislature established Rutgers as the State University of New Jersey.
- 1959: Bond passed to expand higher education construction. Expanded campuses in New Brunswick and Piscataway.
- 1969: Livingston College Founded
- 1972: Rutgers became Co-Ed.
- 1981: Centralized Academic Departments
 - 4 Liberal Arts Colleges: Douglass, Livingston, Rutgers, and University.
- 2004: Reassessment/Merger of 4 Colleges

Rutgers, New Brunswick: Campus Overview

- 5 Campuses
 - Cook/Douglass/
College Ave: New
Brunswick
- Access by Bus System
- Students can live or attend classes in any of the 5 campuses.

