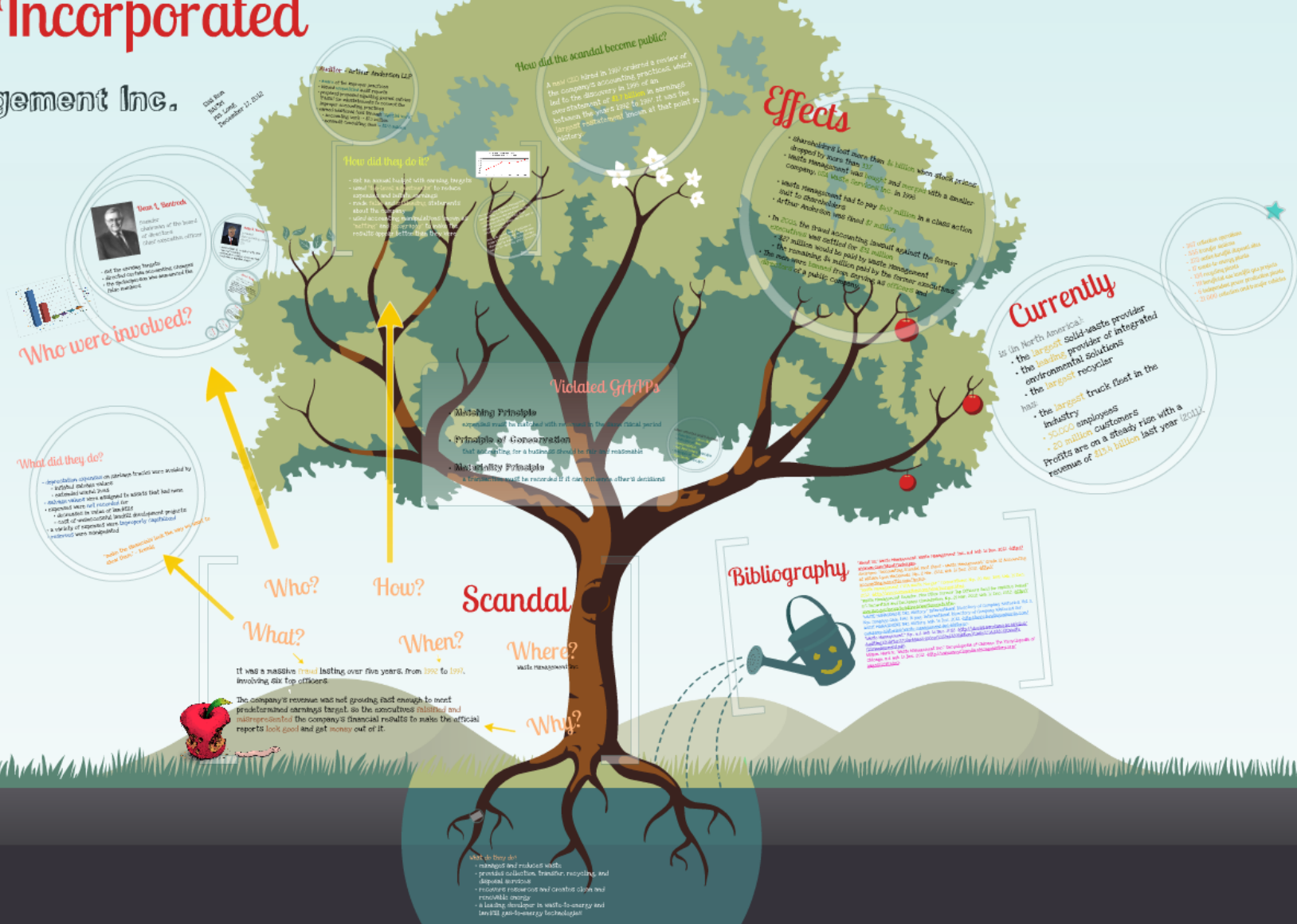


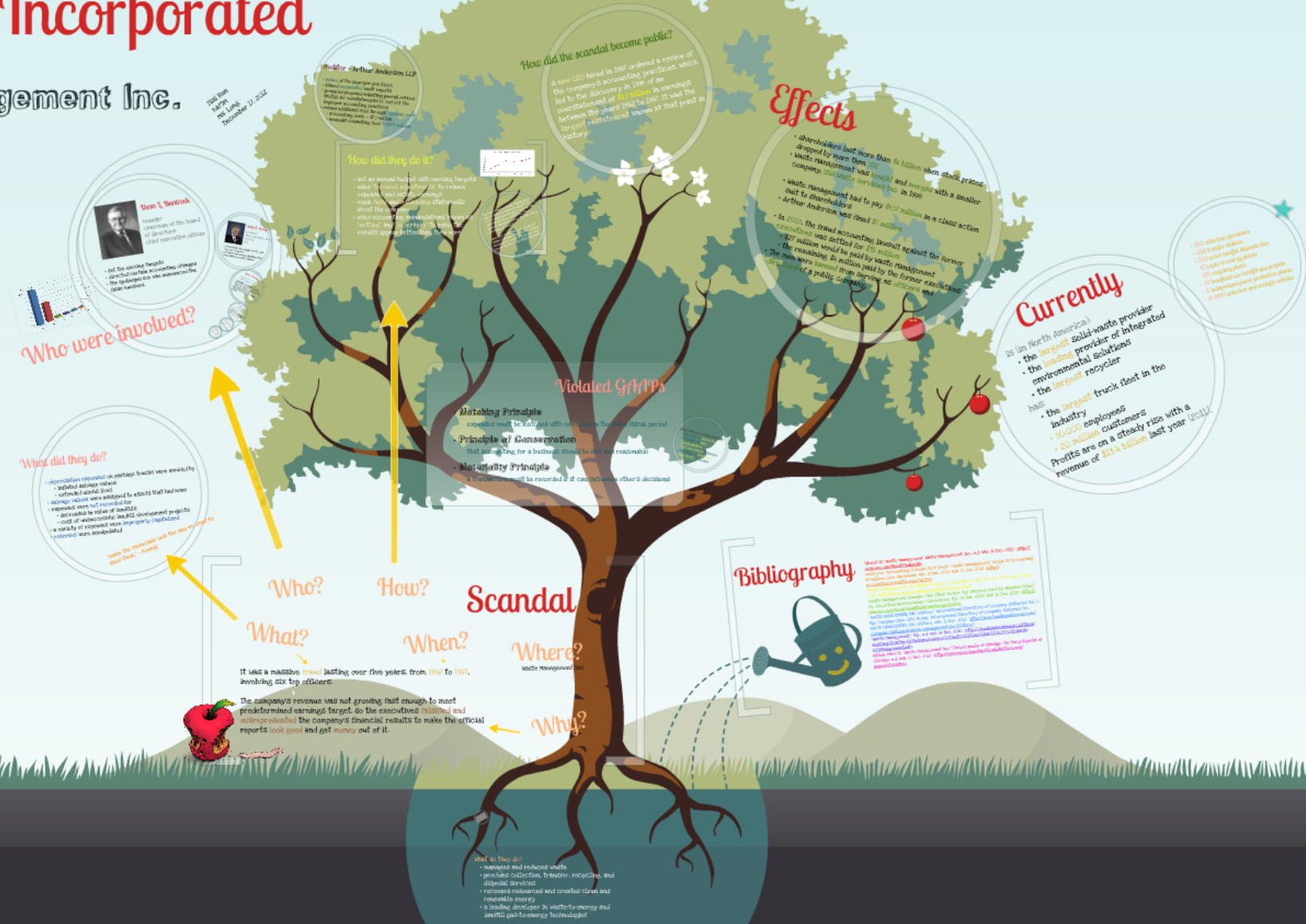
# Massive Incorporated

## Waste Management Inc.



# Massive Incorporated

## Waste Management Inc.



# Massive Incorporated

## Waste Management Inc.

Sisi Ren  
BAFM  
MS. Long  
December 17, 2012



**Dean L. Buntrock**  
founder  
chairman of the board  
of directors  
chief executive officer



**Phillip B. Womack**  
president  
chief operating officer  
director  
CEO

\* indicated that the required write-offs  
were not recorded  
\* overstated accounting disclosure that  
would have a negative impact



Sisi Ren

BAF3M

Ms. Long

December 17, 2012

- manages and reduces waste
- provides collection, transfer, recycling, and disposal services
- recovers resources and creates clean and renewable energy
- a leading developer in waste-to-energy and landfill gas-to-energy technologies

# Overview

Prior to Scandal

## Facts

- founded in 1966 by Dean Buntrock, Wayne Huizenga, and Lawrence Beck
- is a holding company
- buy and own other companies' shares

# Facts

- founded in 1968 by Dean Buntrock, Wayne Huizenga, and Lawrence Beck
- is a holding company
  - buy and own other companies' shares

## what do they do?

- manages and reduces waste
- provides collection, transfer, recycling, and disposal services
- recovers resources and creates clean and renewable energy
- a leading developer in waste-to-energy and landfill gas-to-energy technologies

# Annual Revenue for Waste Management Inc.

