

What is the show?

South Park is a Comedy Central show, created by Matt Stone and Trey Parker, that pokes fun at everything in a ridiculous and vulgar manner.



Variables in our Calculations

• Average Episodes per Season
• Average Amount of Curses for Season
• Total Curses in Series
• Number of Seasons

Endzone

• Average Episodes per Season: 14
• Average Amount of Curses for Season: 20.34
• Total Curses in Series: 287
• Number of Seasons: 10

Calculations

$$\frac{14 \times 20.34}{10} = 28.476$$

Pizzeria Room for Group

• Average Episodes per Season: 14
• Average Amount of Curses for Season: 20.34
• Total Curses in Series: 287
• Number of Seasons: 10

Episodes We Chose

Our "Average" season selected through Random Number Generator (Average = 14 Episodes & Season)



Fun Facts

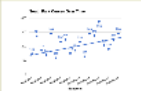
• The show is based on the book "South Park" by Matt Stone and Trey Parker.
• The show is based on the book "South Park" by Matt Stone and Trey Parker.
• The show is based on the book "South Park" by Matt Stone and Trey Parker.

What are we doing?

How many times do the characters curse in the show? If we select a set of various episodes from the entire series to represent a season of the show, what is the probability that it has less curses per episode than the series average?

Series Stats

• Average Episodes per Season: 14
• Average Amount of Curses for Season: 20.34
• Total Curses in Series: 287
• Number of Seasons: 10



Words We Counted

- Damn
- Dick
- Ass
- Bitch
- Fuck
- Tits
- Piss
- Cunt
- Shit

We didn't count slurs, only pure cursing in this experiment.

South Park Statistics

Thanks for Watching



What is the show?

South Park is a Comedy Central show, created by Matt Stone and Trey Parker, that pokes fun at everything in a ridiculous and vulgar manner.



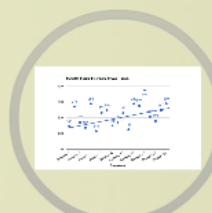
What are we doing?

How many times do the characters curse on the show? If we select a set of random episodes from the entire series to represent a season of the show, what is the probability that it has less curses per episode than the series average?

Series Stats

- Average Episodes per Season: 14
- Average Number of Curses per Series: 15.84
- Total Episodes in Series: 217
- Number of Seasons: 12

Season	Episodes	Avg Curses
1	13	14.69
2	13	14.69
3	13	14.69
4	13	14.69
5	13	14.69
6	13	14.69
7	13	14.69
8	13	14.69
9	13	14.69
10	13	14.69
11	13	14.69
12	13	14.69



Conclusion

There is a 50% chance that a random selection of 14 episodes from the series will have a lower average number of curses than the series average.

Calculations

$$NPERIODS = 14$$

$$PERIODS = 14$$

$$PERIODS = 14$$

Variables in our Calculations

Variables in our calculations include the number of episodes selected, the number of curses in each episode, and the series average.

Episodes We Chose

Our "average" season, selected through Random Number Generator (average 14 Episodes a Season)

Episode	Curses
1	12
2	15
3	18
4	10
5	20
6	14
7	16
8	11
9	19
10	13
11	17
12	15
13	14
14	16

Fun Facts

The Top 3 episodes with the most curses are:
 1. Episode 12 (18 curses)
 2. Episode 10 (20 curses)
 3. Episode 9 (19 curses)
 The South Park episode "South Park: Bigger, Longer and Cooler" has a total of 100 curses. This was also the episode that featured the "Milk Mustache" gag.
 The character Kenny McCormick is the only character to die in the series.

Words We Counted

- Damn
- Dick
- Ass
- Douchebag
- Bitch
- Fuck
- Tits
- Dick
- Cunt
- Shit

We didn't count slurs, only pure curses in this experiment.

South Park Statistics



What is the show?

South Park is a Comedy Central show, created by Matt Stone and Trey Parker, that pokes fun at everything in a ridiculous and vulgar manner.



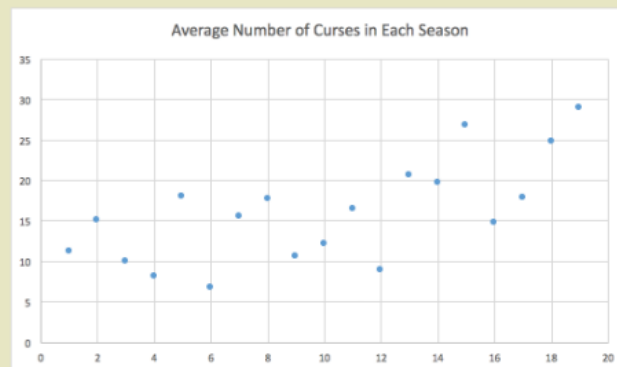
YouTube

What are we doing?

How many times do the characters curse in the show? If we select a set of random episodes from the entire series to represent a season of the show, what is the probability that it has less curses per episode than the series average?

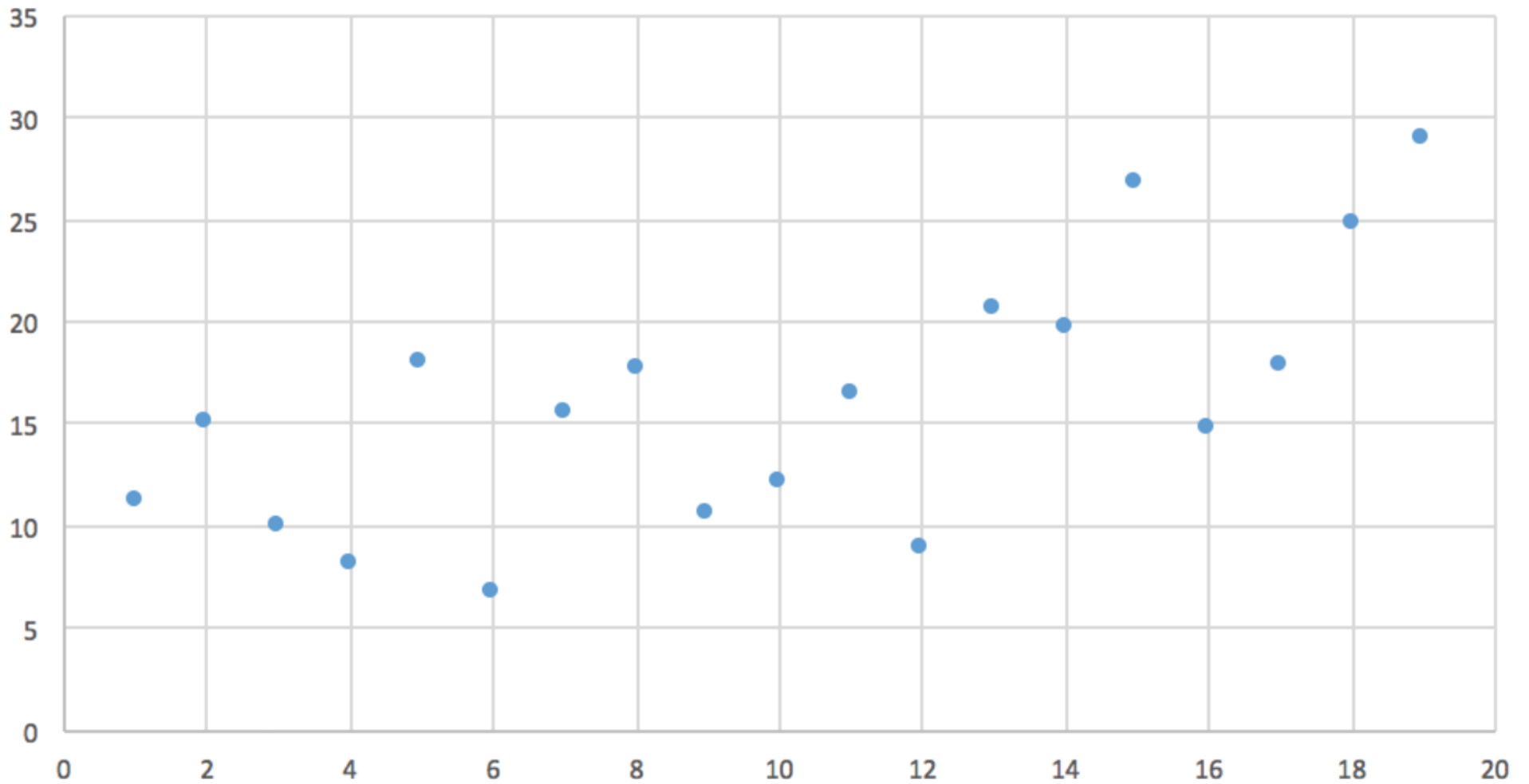
Series Stats

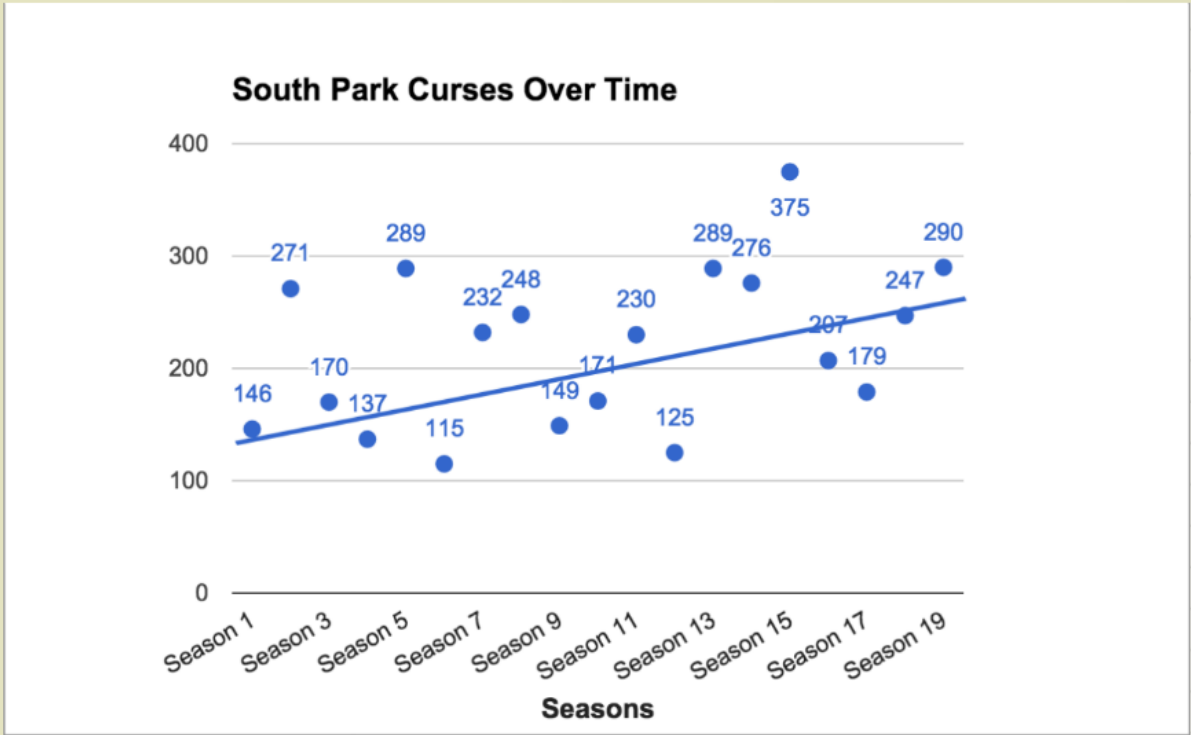
- Average Episodes per Season: 14
- Average Amount of Curses for Series: 15.389
- Total Episodes in Series: 267
- Number of Seasons: 19



Number of Seasons. 19

Average Number of Courses in Each Season





Words We Counted

- Damn
- Dick
- Ass
- Douchebag
- Bitch
- Fuck
- Tits
- Piss
- Cunt
- Shit

We didn't count slurs, only pure curses in this experiment.