



Nonalcoholic Fatty Liver Disease (NAFLD)

Emily Heun



69

69

69

69

69

69

69

Thank You!

Thecasesolution.com



Nonalcoholic Fatty Liver Disease (NAFLD)

Emily Heun



Thecasesolution.com

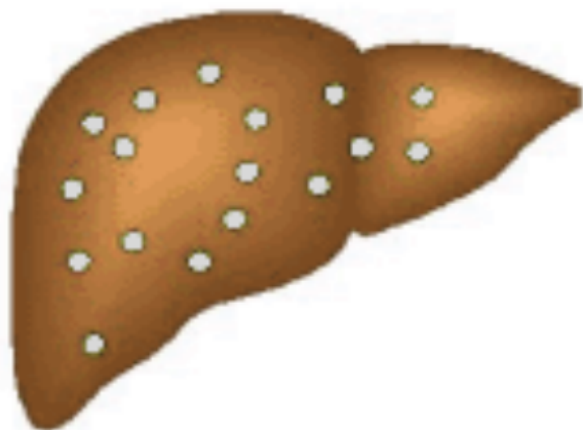
What is it?

- Nonalcoholic fatty liver disease is a term used to describe the accumulation of fat in the liver of people who drink little or no alcohol.
- Nonalcoholic fatty liver disease is common and, for most people, causes no signs and symptoms and no complications.

Non-alcoholic Fatty Liver Disease and Cirrhosis

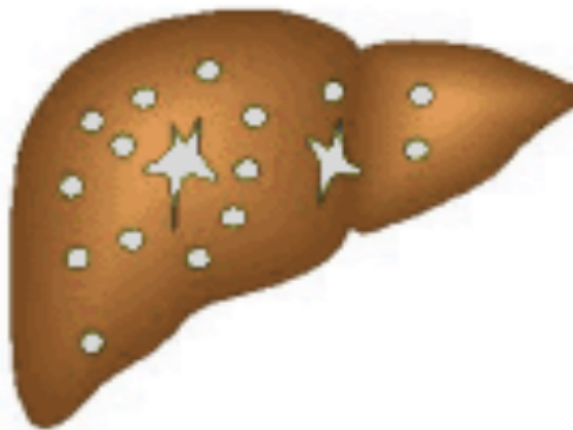


Simple Fatty Liver
(steatosis)



Fat accumulates
in the liver

NASH



Fat plus inflammation
and scarring

Cirrhosis



Scar tissue
replaces liver
cells

Etiology

- Nonalcoholic fatty liver disease occurs when your liver has trouble breaking down fats, causing fat to build up in your liver tissue.
- Doctors aren't sure what causes nonalcoholic fatty liver disease. The wide range of diseases and conditions linked to nonalcoholic fatty liver disease is so diverse that it's difficult to pinpoint any one cause.



Normal

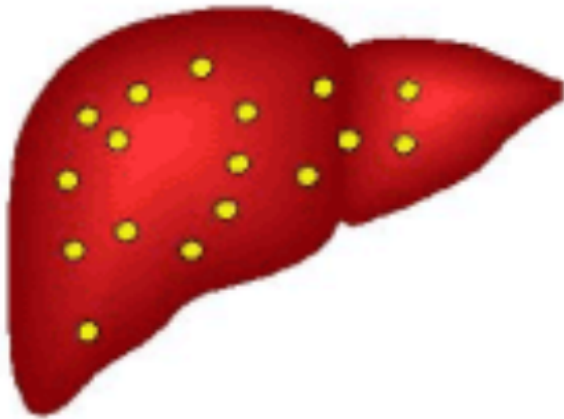
Fatty

Pathophysiology

- NAFLD is considered to cover a spectrum of disease activity. This spectrum begins as fatty accumulation in the liver. A liver can remain fatty without disturbing liver function, but by varying mechanisms and possible insults to the liver may also progress to become non-alcoholic steatohepatitis (NASH).
- NASH is a progressive disease: over a 10-year period, up to 20% of patients with NASH will develop cirrhosis of the liver, and 10% will suffer death related to liver disease.
- The exact cause of NAFLD is still unknown. However, both obesity and insulin resistance play a strong role in the disease process.

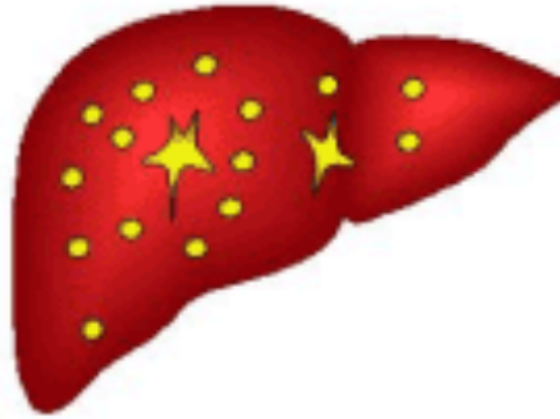
The Spectrum of NAFLD

Fatty Liver



Fat
accumulates
in the liver

NASH



Fat plus
inflammation
and scarring

Cirrhosis



Scar tissue
replaces liver
cells