



- No national standard of training**
- Development has been ad hoc
 - No national standardized guidelines
 - Tactical Combat Casualty Care



CARE in the HOT ZONE (care under fire)

- Fire superiority
- Stop life threatening bleeding
- Protect yourself
- Protect the casualty
- Scoop and Go

INJURY PRIORITY

- Life Threatening
- Bleeds
- Breathing
- Bleeding Wounds
- Broken Bones
- Burns

CARE in the WARM ZONE (Tactical Field Care)

- Airway Management
- Breathing
- Circulation
- Disability
- Exposure
- Fractures
- Head Injury
- Hemorrhage
- Hypothermia
- Infection
- Pain Management
- Psychological
- Triage
- Wound Care



Management Guidelines

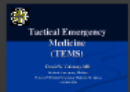
3 ZONES of Care

- HOT
- WARM
- COOL

COOL ZONE

- Staging Area
- Relatively Safe
- Must stay alert

Reference:



Tactical Emergency Medical Support (TEMS) OVERVIEW

- WHAT IS TEMS?
- TEMS CHALLENGES
- MANAGEMENT GUIDELINES
- DIFFERENCE BETWEEN THE CONVENTIONAL EMS

DIFFERENCE BETWEEN THE CONVENTIONAL EMS

EMS

- Rescuer safety
- Scene Safety
- Ambulance based
- Triage
- BLS
- ALS
- CPR

TEMS

- Mission Success
- Team Safety
- Zones of Care
- Man Pack
- Tactical constraints
- Preventive medicines
- Health Maintenance
- Trauma care

What is TEMS?

TEMS is an out-of-hospital system of care dedicated to enhancing the probability of special operations law enforcement mission success and promoting public safety

Goals of TEMS

- Mission Accomplishment
- Overall Team Health
- "Stay with the Key" Mentality
- Protection of:
 - Team Members
 - Victims/Hostages
 - Eyewitnesses
 - Perpetrators

The "Working" Environment

- Special Equipment
- "Man Pack"
- Plan for the worst, hope for the best
- Difficult to work in HOT ZONE

Qualifications

- Is an emergency medical technician (EMT), an advanced EMT or a paramedic
- Is employed by a law enforcement agency or an emergency medical service agency to provide prehospital and field medical treatment to victims of violent confrontations
- Has successfully completed an accredited educational training program in tactical emergency medicine

TEMS Challenges

- Image of the Medical Provider
- Provision of care in hostile environments
- Limited Resources
- NO national standard of training
- Ethics

TACTICAL EMERGENCY MEDICAL SUPPORT (TEMS)

Thecasesolution.com



- No national standard of training**
- Development has been ad hoc
 - No national standardized guidelines
 - Tactical Combat Casualty Care



CARE in the HOT ZONE (care under fire)

- Fire superiority
- Stop life threatening bleeding
- Protect yourself
- Protect the casualty
- Scoop and Go

INJURY PRIORITY

- Life Threatening Bleeds
- Breathing
- Bleeding Wounds
- Broken Bones
- Burns

CARE in the WARM ZONE (Tactical Field Care)

- Airway Management
- No airway obstruction
- Chest tube per protocol
- Rapid Resuscitation
- Pain management
- Triage
- Bleeding
- Shock
- Hemorrhage
- Neurology
- Critical Care
- Resuscitation
- IV Access
- Hemodynamics
- Central Venous Access
- Hemorrhage
- Hemorrhage



Management Guidelines

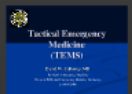
3 ZONES of Care

- HOT
- WARM
- COOL

COOL ZONE

- Staging Area
- Relatively Safe
- Must stay alert

Reference:



Tactical Emergency Medical Support (TEMS) OVERVIEW

- WHAT IS TEMS?
- TEMS CHALLENGES
- MANAGEMENT GUIDELINES
- DIFFERENCE BETWEEN THE CONVENTIONAL EMS

DIFFERENCE BETWEEN THE CONVENTIONAL EMS

EMS

- Rescuer safety
- Scene Safety
- Ambulance based
- Triage
- BLS
- ALS
- CPR

TEMS

- Mission Success
- Team Safety
- Zones of Care
- Man Pack
- Tactical constraints
- Preventive medicines
- Health Maintenance
- Trauma care

TEMS Challenges

- Image of the Medical Provider
- Provision of care in hostile environments
- Limited Resources
- NO national standard of training
- Ethics

The "Working" Environment

- Special Equipment
- "Man Pack"
- Plan for the worst, hope for the best
- Difficult to work in HOT ZONE

Qualifications

- Is an emergency medical technician (EMT), an advanced EMT or a paramedic
- Is employed by a law enforcement agency or an emergency medical service agency to provide national and local medical treatment to victims of violent confrontations
- Has successfully completed an accredited educational training program in tactical emergency medicine

What is TEMS?

TEMS is an out-of-hospital system of care dedicated to enhancing the probability of special operations law enforcement mission success and promoting public safety

Goals of TEMS

- Mission Accomplishment
- Overall Team Health
- "Step into the Role" Mentality
- Protection of:
 - Team Members
 - Victims/Hostages
 - Bystanders
 - Perpetrators

TACTICAL EMERGENCY MEDICAL SUPPORT (TEMS)

Thecasesolution.com

OVERVIEW

- WHAT IS TEMS?
- TEMS CHALLENGES
- MANAGEMENT GUIDELINES
- DIFFERENCE BETWEEN THE CONVENTIONAL EMS



DIFFERENCE BETWEEN THE CONVENTIONAL EMS

EMS

- Rescuer safety
- Scene Safety
- Ambulance based
- Triage
- BLS
- ALS
- CPR

TEMS

- Mission Success
- Team Safety
- Zones of Care
- Man Pack
- Tactical constraints
- Preventive medicines
- Health Maintenance
- Trauma care

TACTICAL EMERGENCY MEDICAL SUPPORT (TEMS)

Thecasesolution.com



Tactical Emergency Medical Support (TEMS) OVERVIEW

- WHAT IS TEMS?
- TEMS CHALLENGES
- MANAGEMENT GUIDELINES
- DIFFERENCE BETWEEN THE
CONVENTIONAL EMS

Support (TEMS)

OVERVIEW

- WHAT IS TEMS?
- TEMS CHALLENGES
- MANAGEMENT GUIDELINES
- DIFFERENCE BETWEEN THE CONVENTIONAL EMS



*What is **TEMS**?*

MS is an out-of-hospital system of care dedicated
ancing the probability of special operations law

*What is **TEMS**?*

TEMS is an out-of-hospital system of care dedicated to enhancing the probability of special operations law enforcement mission success and promoting public safety

