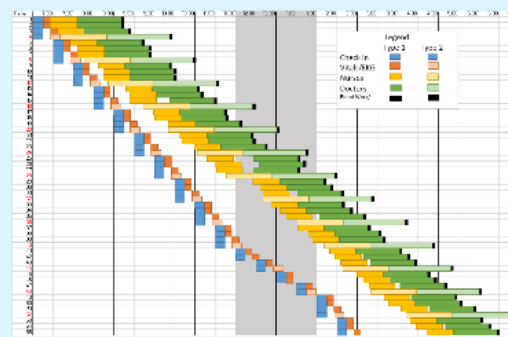
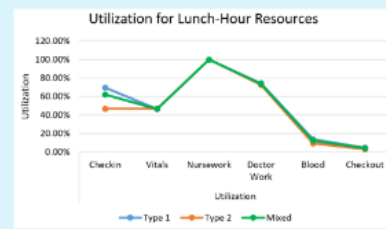
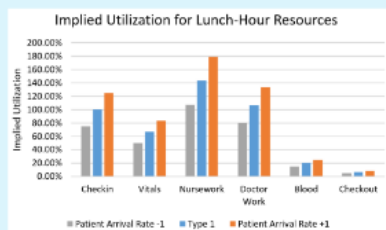




	Bottleneck	System Capacity (pat/hr)	Average System Time (min)	System Throughput (pat/hr)
Type 1	Nursework	2.79	195.20	7.79
Type 2	Nursework	1.88	194.70	1.88
Mixed (Type 1 + 2) * 2	Nursework	2.49	152.35	7.01



Thanks! Questions?



# MASSACHUSETTS GENERAL HOSPITAL

Team 34

Vishal Reddy

Saerang Cha

Chris Filteau

Karan Kapoor

Tyla Flexm

[Thecasesolution.com](http://Thecasesolution.com)

# *Type 1*



Check-In  
15 minutes /  
patient



**Lab Work**  
**10 minutes/patient**

## *Bottleneck*



**Registered Nurses**  
**43 minutes/patient**