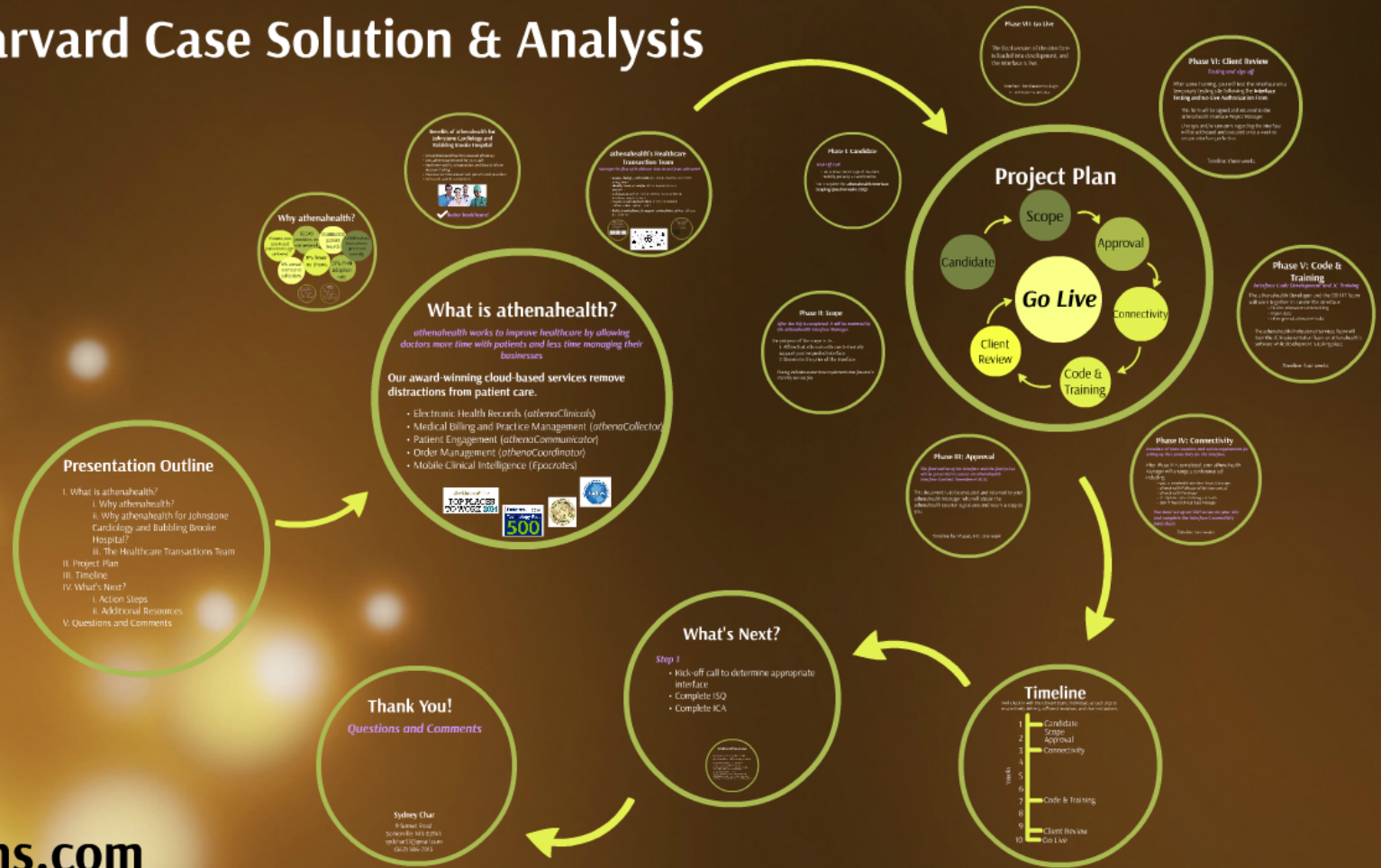


Athena Health Harvard Case Solution & Analysis



rk records transactions processed annually
fewer shows 97% EMR adoption rate
Patient Health & Compliance



What is athenahealth?

athenahealth works to improve healthcare by allowing doctors more time with patients and less time managing their businesses

Our award-winning cloud-based services remove distractions from patient care.

- Electronic Health Records (*athenaClinicals*)
- Medical Billing and Practice Management (*athenaCollector*)
- Patient Engagement (*athenaCommunicator*)
- Order Management (*athenaCoordinator*)
- Mobile Clinical Intelligence (*Epocrates*)



Why athenahealth?

150,000,000
automated
patient messages
delivered

62,349
providers on
our network

55,000,000
patient
records

1.2 billion data
transactions
processed
annually

6% annual
increase in
collections

8% fewer
no-shows

97% EMR
adoption
rate

Focus on Convenience

athenahealth makes managing your practice easier

athenahealth's cloud-based EMR is Epic's only service that can be used on any device

athenahealth's cloud-based EMR is Epic's only service that can be used on any device

athenahealth's cloud-based EMR is Epic's only service that can be used on any device

athenahealth's cloud-based EMR is Epic's only service that can be used on any device

athenahealth's cloud-based EMR is Epic's only service that can be used on any device

athenahealth's cloud-based EMR is Epic's only service that can be used on any device

athenahealth's cloud-based EMR is Epic's only service that can be used on any device

athenahealth's cloud-based EMR is Epic's only service that can be used on any device

athenahealth's cloud-based EMR is Epic's only service that can be used on any device

Patient Safety & Confidentiality

Cloud-based services enhance security over traditional technology platforms

- Data backup at a secure location geographically separate from the primary location
- Uniform, high-level security, privacy controls, and resources all supported by a high-level investment of resources unavailable to private practices
- A single, integrated database platform that avoids risks inherent in using multiple information platforms
- Constant monitoring that is impossible with non-electronic and non-cloud-based software

Focus on *Convenience*

athenahealth makes managing your practice easier

athenahealth's **cloud-based EHR & Epocrates services**, streamline the entire workflow process

athenaCollector combines cloud-based care with networked intelligence & back-office services to **ensure efficiency, updated software, and error-free claims**

athenaCommunicator patient portal (named Best in KLAS), keeps patients satisfied while **reducing administrative work for healthcare organizations**

athenaText, our secure text messaging service, allows text & image sharing while staying HIPAA compliant

Patient Safety & Confidentiality

Cloud-based services enhance security over traditional technology platforms.

- **Data backup at a secure location** geographically separate from the primary location
- Uniform, high-level security, privacy controls, and resources all supported by a **high-level investment** otherwise unaffordable to private practices
- **A single, integrated database platform** that avoids risks inherent in using multiple information platforms
 - **Constant monitoring** that is impossible with non-electronic and non-cloud-based software

Benefits of athenahealth for Johnstone Cardiology and Bubbling Brooke Hospital

- Streamlined workflow for increased efficiency
- Less administrative work for your staff
- Real-time visibility of operations and data to inform decision-making
- Improved communication with patients and providers
- Increased patient satisfaction



✓ *Better healthcare!*