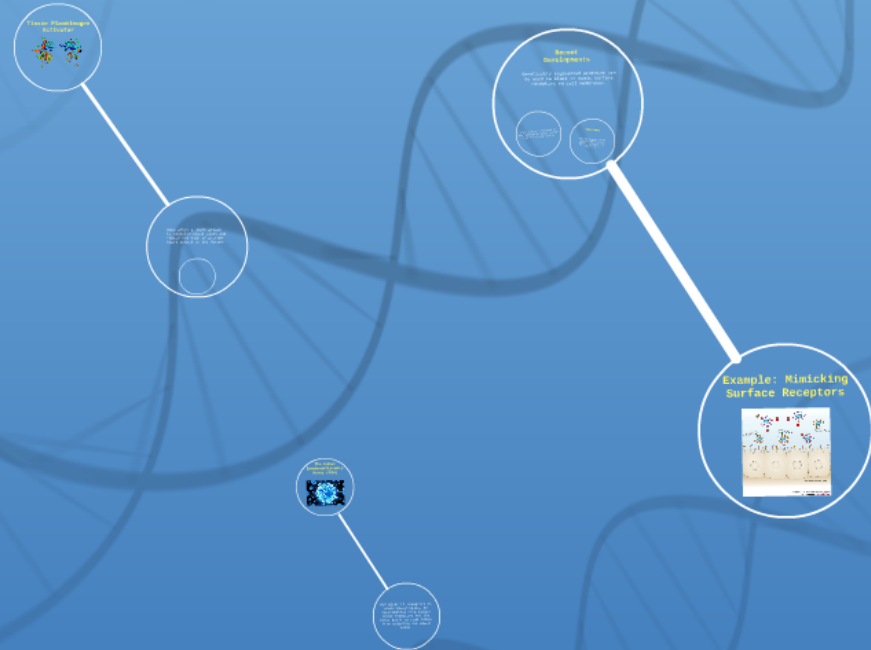
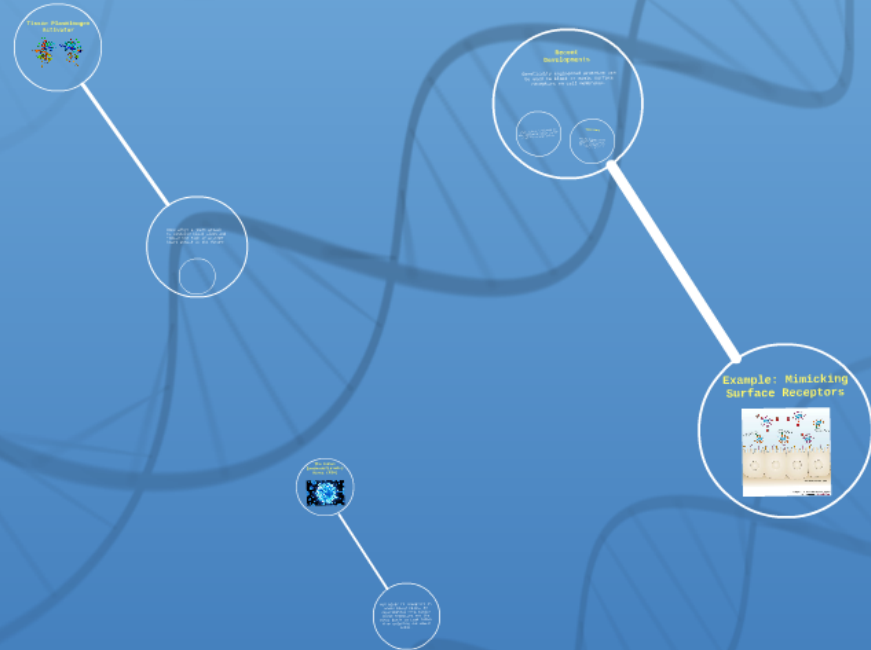


White Pharmaceutical Harvard Case Solution & Analysis



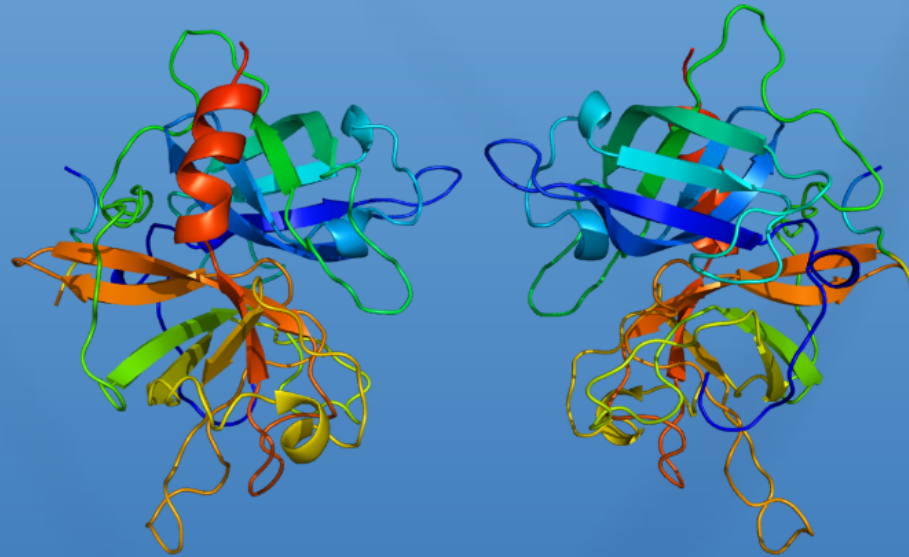
TheCaseSolutions.com

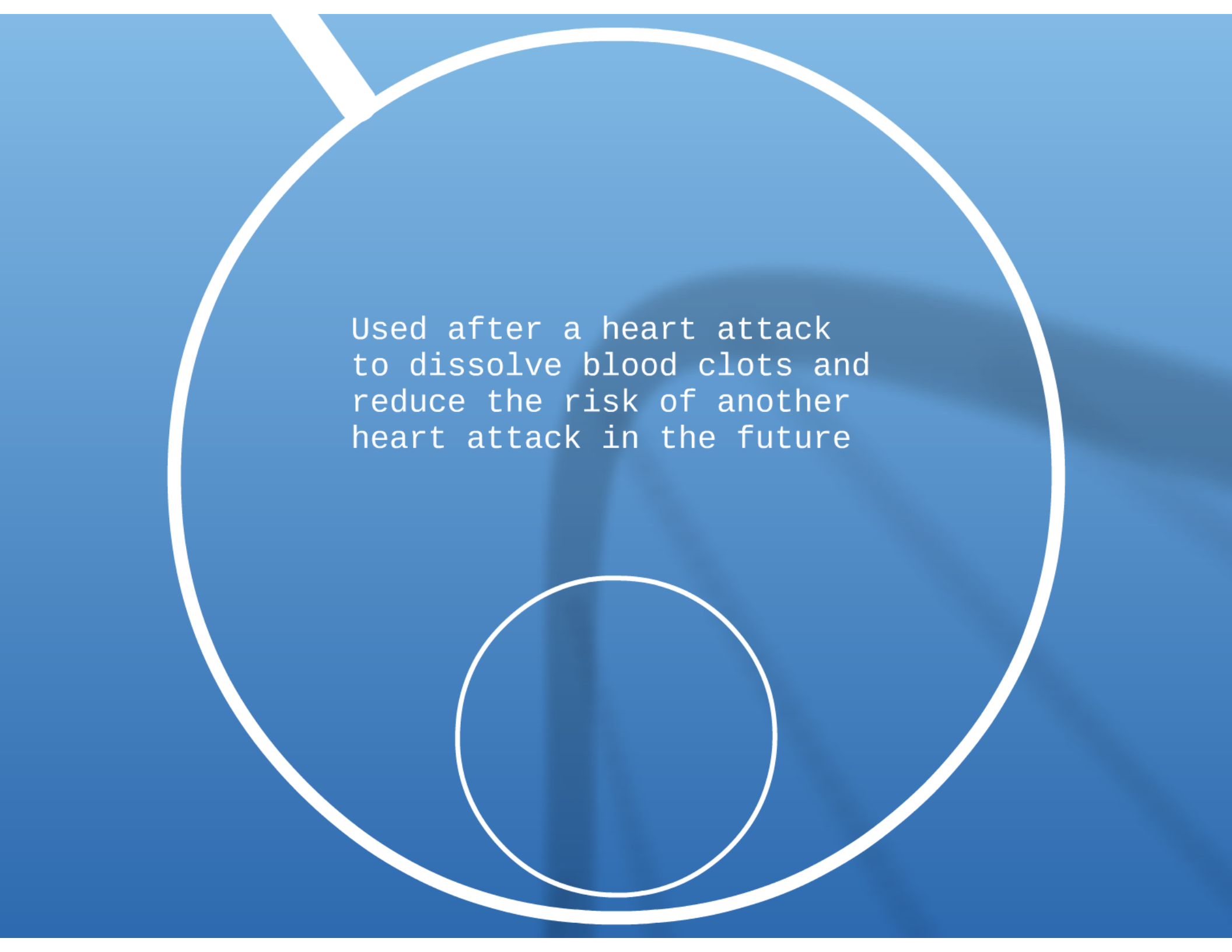
White Pharmaceutical Harvard Case Solution & Analysis



TheCaseSolutions.com

Tissue Plasminogen Activator





Used after a heart attack
to dissolve blood clots and
reduce the risk of another
heart attack in the future

Recent Developments

Genetically engineered proteins can be used to block or mimic surface receptors on cell membranes.

This attracts viruses to the mimicking cells rather than the actual cells.

Vaccines

Vaccines stimulate immune system to defend against specific pathogens, using attenuated (weakened) or inactive forms.

This attracts viruses to
the mimicking cells rather
than the actual cells.

Vaccines

Vaccines stimulate immune system to defend against specific pathogens, using attenuated (weakened) or inactive forms.

Example: Mimicking Surface Receptors

