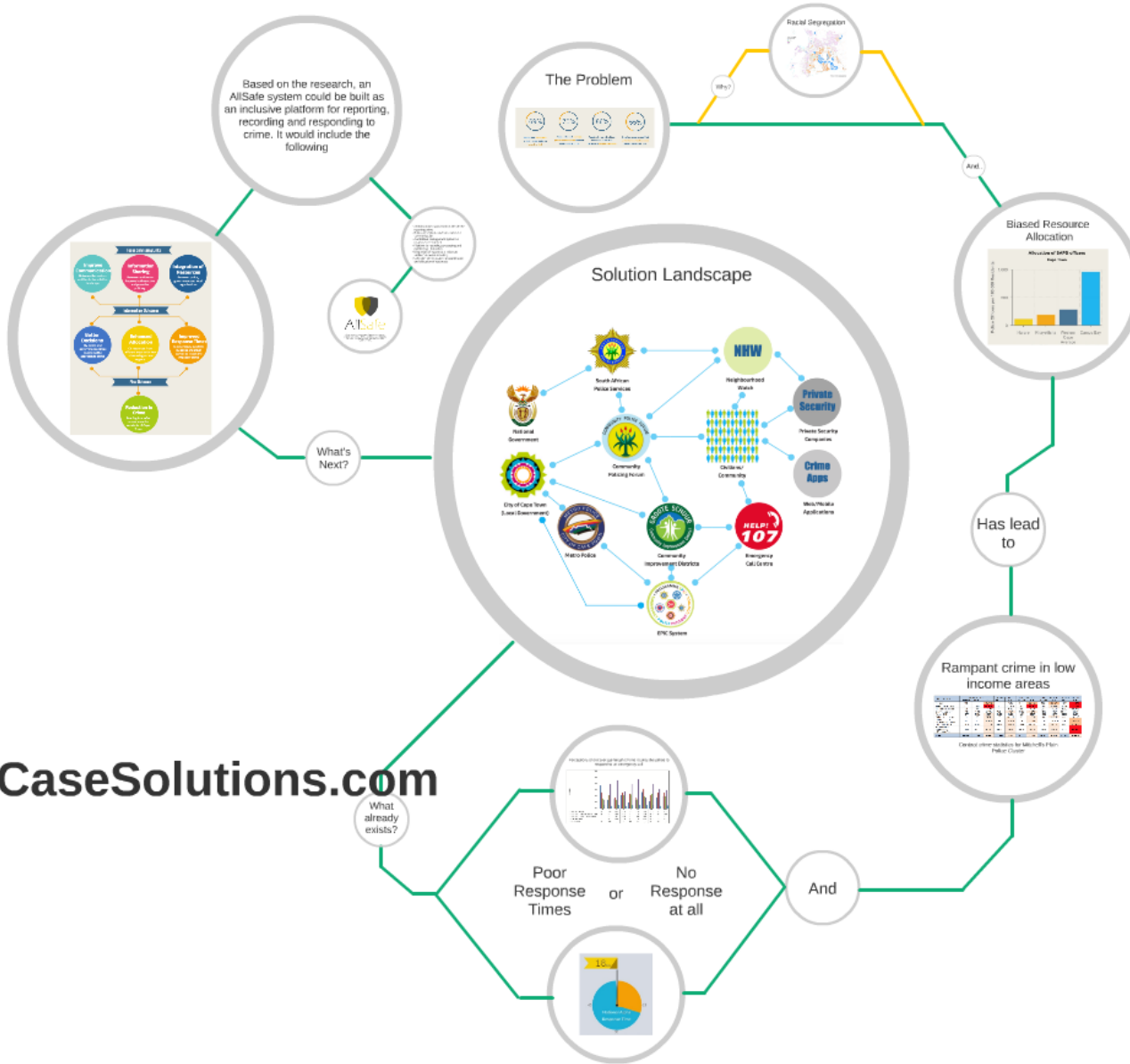




# THE GLOBAL CHALLENGE OF DIABETES MELLITUS Harvard Case Solution & Analysis



TheCaseSolutions.com

# The Problem



People who felt unsafe in their residential area when it is dark



People who took physical protection measures for their homes against crime



People who perceived that crime was committed because of drug related need



People who perceived that violent crime has increased in their residential area

# The Problem



People who **felt unsafe** in their residential area **when it is dark**



People who took **physical protection measures** for their homes against crime



People who perceived that crime was committed because of **drug related need**

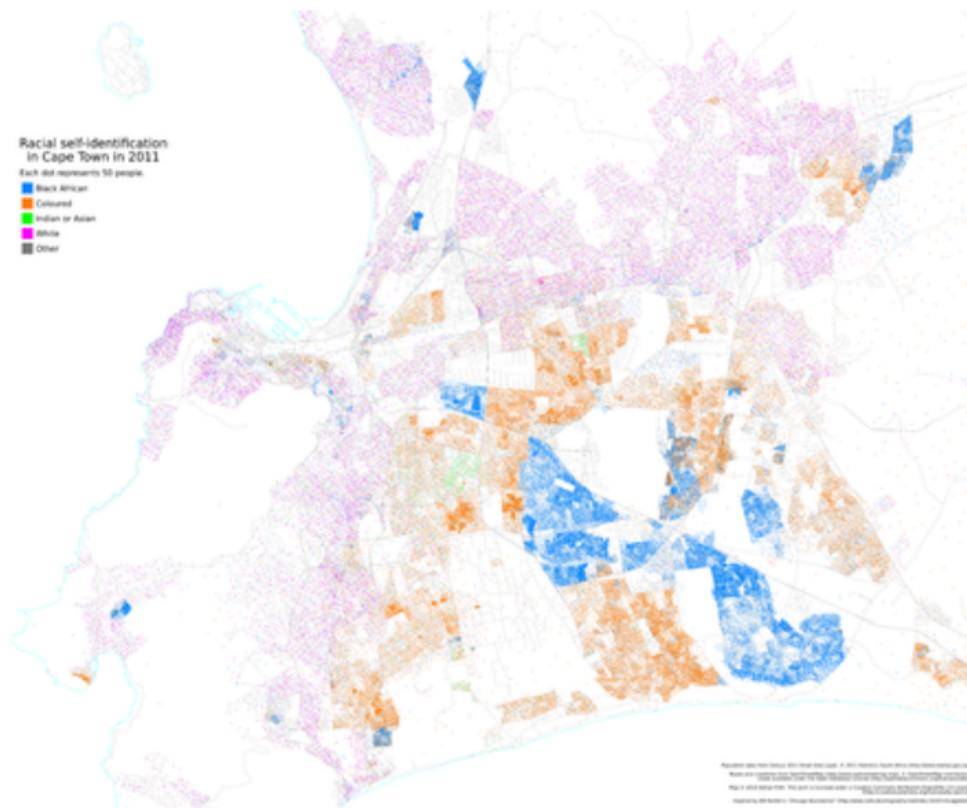


People who perceived that **violent crime has increased** in their residential area



Why?

# Racial Segregation





And...

# Biased Resource Allocation

