

### Social and economic consequences

Stress affects all kinds of human activity, especially labour activity.

Only US companies annually spend more than \$ 60 billion on measures to combat the effects of stress (sick pay, the establishment of psychological support services, personnel and so on.).

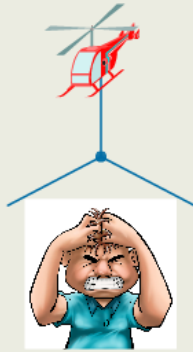
Because of stress is a decrease in productivity, product quality, increased staff turnover, increasing the number of disciplinary violations, workplace injuries, workers often suffer.



### Conclusion

Life is full of difficulties and obstacles, from birth to death.

Only when society is United it can overcome all difficulties



TheCaseSolutions.com

# Stress and the City Harvard Case Solution & Analysis

*Table of Contents*

*Current situation*

*Main urban problems*

*The Ways to overcome*

*Challenges*

*Social and economic consequences*

*Conclusions*



# *Table of Contents*

*Current situation*

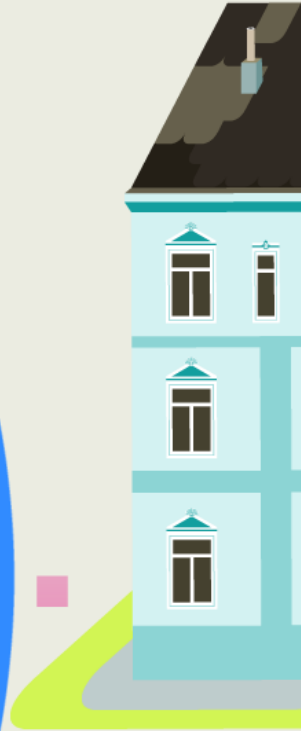
*Main urban problems*

*The Ways to overcome*

*Challenges*

*Social and economic consequences*

*Conclusions*





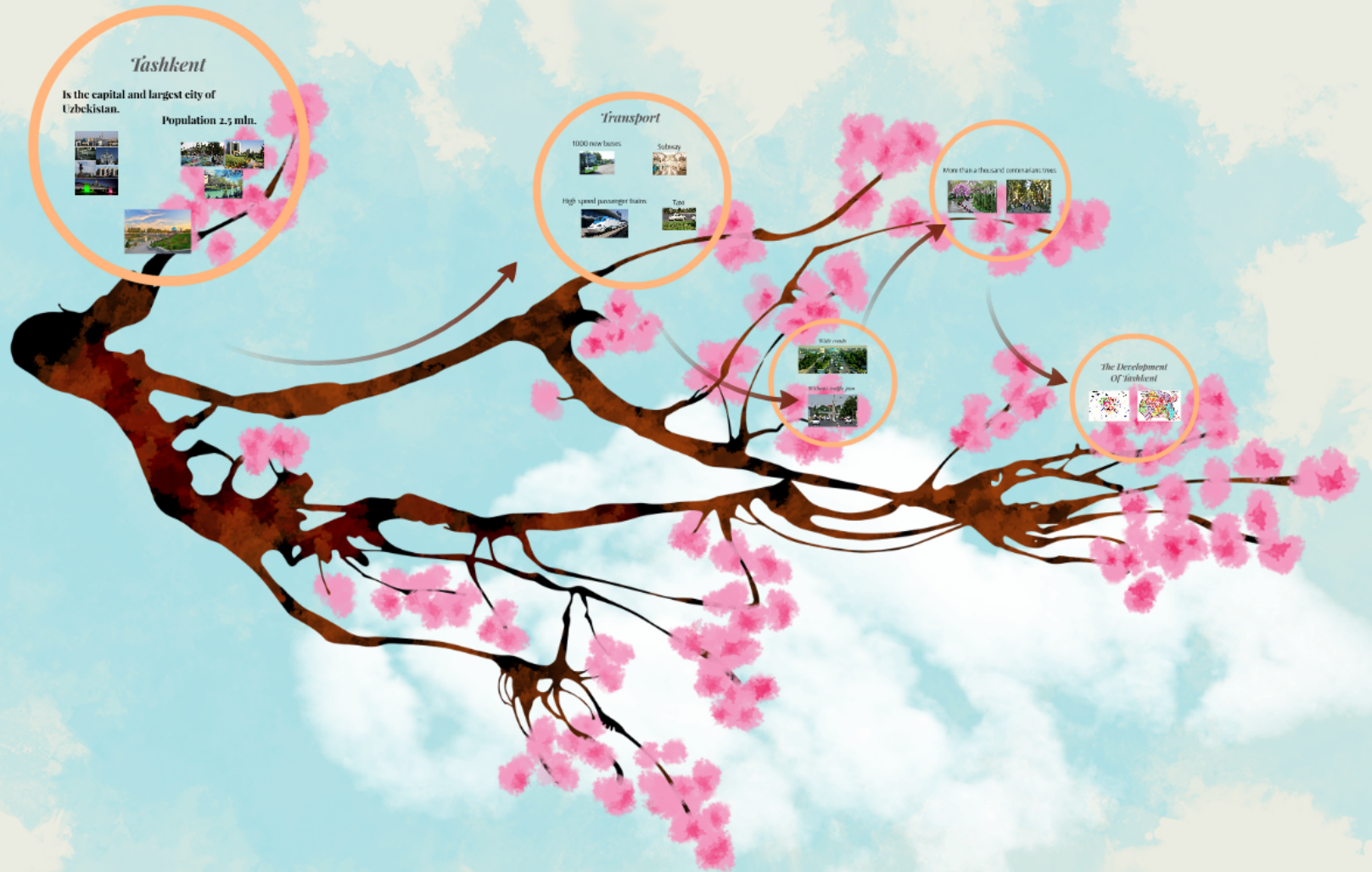
# *Table of Contents*

*Current situation*

*Main urban*

*The Ways to overcome*

# Current situation





# *Tashkent*

**Is the capital and largest city of  
Uzbekistan.**

**Population 2.5 mln.**

