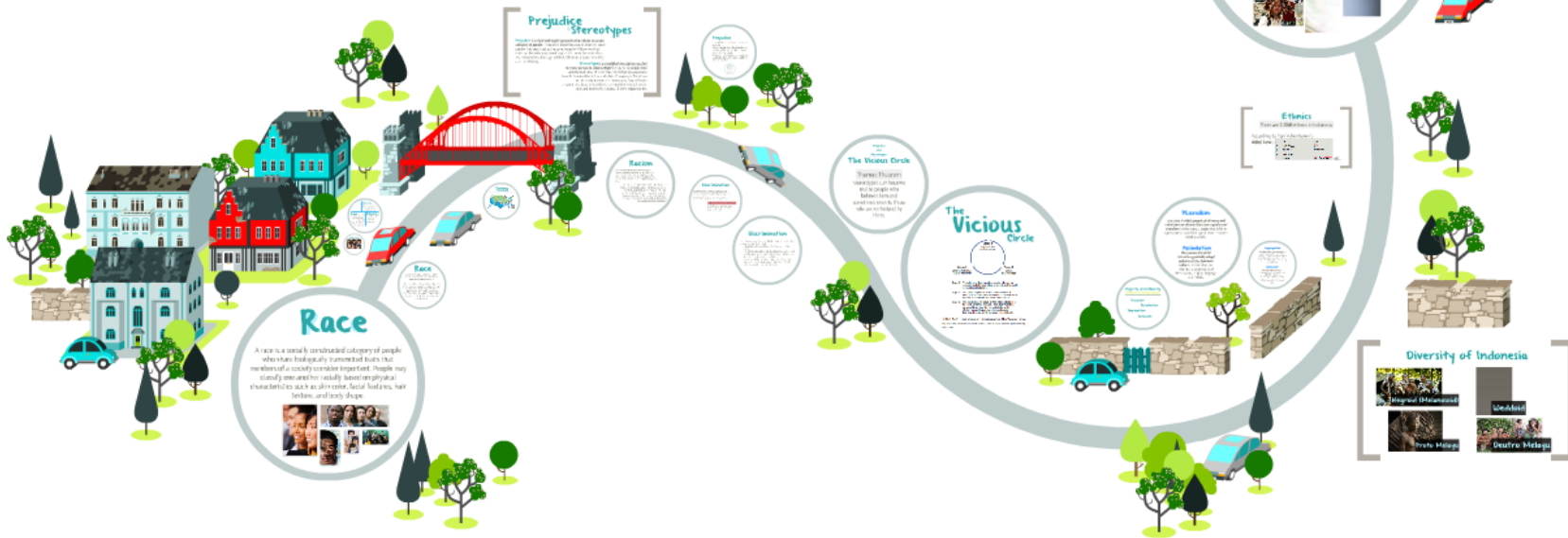


Ethnicity And Race Harvard Case Solution & Analysis



Indra Satriawan
 Fatmahanika Tika
 Dimpita Riza Permana
 Muhammad Hafidhan
 Nurhaning Dharma
 Tabrizul Rizki
 N. Nurfarida
 Nurfarida Nurfarida

TheCaseSolutions.com

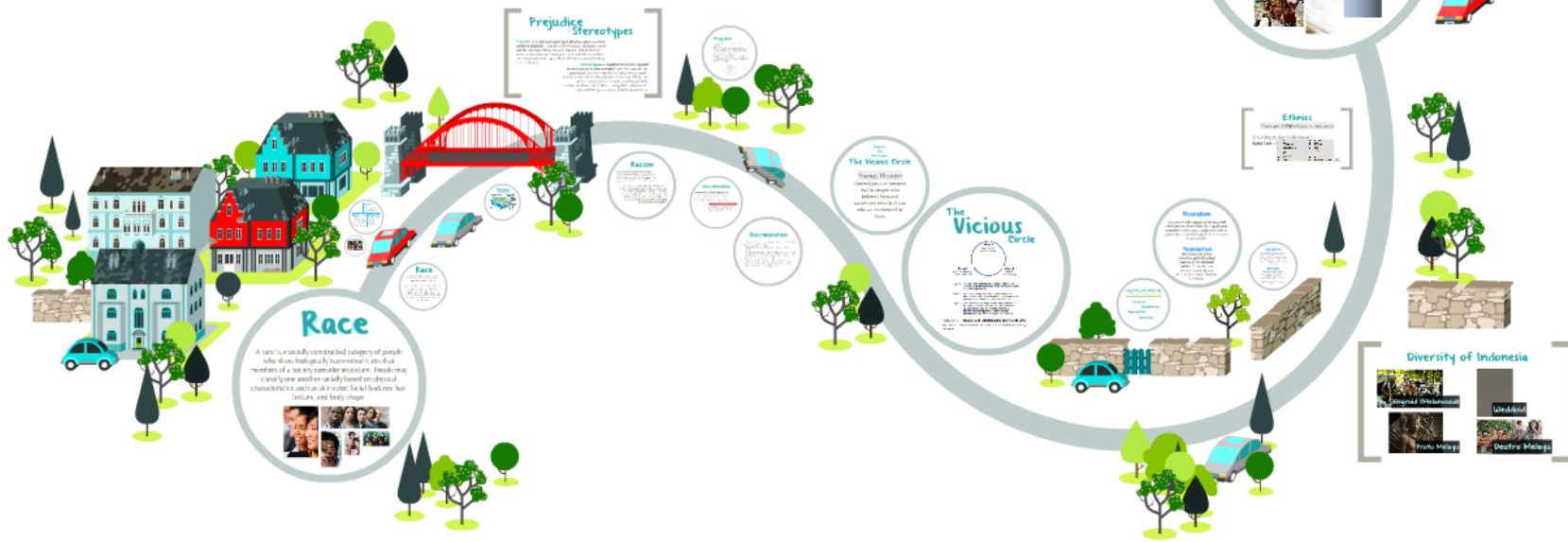


Ethnicity And Race Harvard Case Solution & Analysis

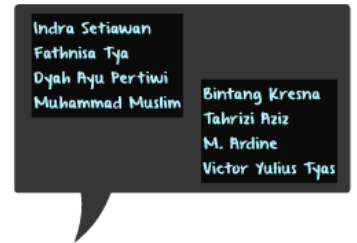


Video Definition
 Pathways Typ
 Cycle Rpt For Hnd
 Muhammad Sultan
 Anthony Strona
 Niall Reid
 Victor Kaban Typ

TheCaseSolutions.com



ty And Race Harvard Case Solution &



TheCaseSolutions.com

Indra Setiawan

Fathnisa Tya

Dyah Ayu Pertiwi

Muhammad Muslim

Bintang Kresna

Tahrizi Aziz

M. Ardine

Victor Yulius Tyas

Although we think of race in terms of biological elements, race is a socially constructed concept. It is true that human beings differ in any number of ways involving physical traits, but a "race" comes into being only when the members of a society decide that some physical trait actually matters.

Race

A race is a socially constructed category of people who share biologically transmitted traits that members of a society consider important. People may classify one another racially based on physical characteristics such as skin color, facial features, hair texture, and body shape.



Race

Racial diversity appeared among our human ancestors as the result of living in different geographic regions of the world.

Although we think of race in terms of biological elements, race is a socially constructed concept.

It is true that human beings differ in any number of ways involving physical traits, but a “race” comes into being only when the members of a society decide that some physical trait actually matters.

Racial Types



The range of biological variation in human beings is far greater than any system of racial classification allows. This fact is made obvious by trying to place all of the people pictured here into simple racial categories.

Minority

is any category of people distinguished by physical or cultural difference that a society sets apart and subordinates.

Race is a socially constructed category of people who share biologically transmitted traits that members of a society consider important

Ethnicity is a shared cultural heritage