

Venture Valuation AG: The Genedata Assignment

TheCaseSolutions.com

What is **BIG DATA**?



Big data refers to a vast library of data that cannot be analyzed using simple statistical quantification tools. Instead, it requires computer algorithms with fast processing speeds and programs to go through the data. These large amounts of data can tell us a lot about the behavior of humans in the environment, this in turn makes it very useful in predicting the impact of various city planning policies will on the people living in the environments and the overall economy.

Image Source: <http://www.greenbacklab.org/2012/03/21/big-data-opportunity-or-threat/>

Shift in World's Economy



Image Source: <http://www.gettyimages.com/detail/1246120494/1246120494>

Image Source: <http://www.gettyimages.com/detail/1246120494/1246120494>

This is a result of our economy transitioning from one based on agricultural industry to an economy based on the transactions of goods and services.

TheCaseSolutions.com



What is **BIG DATA**?

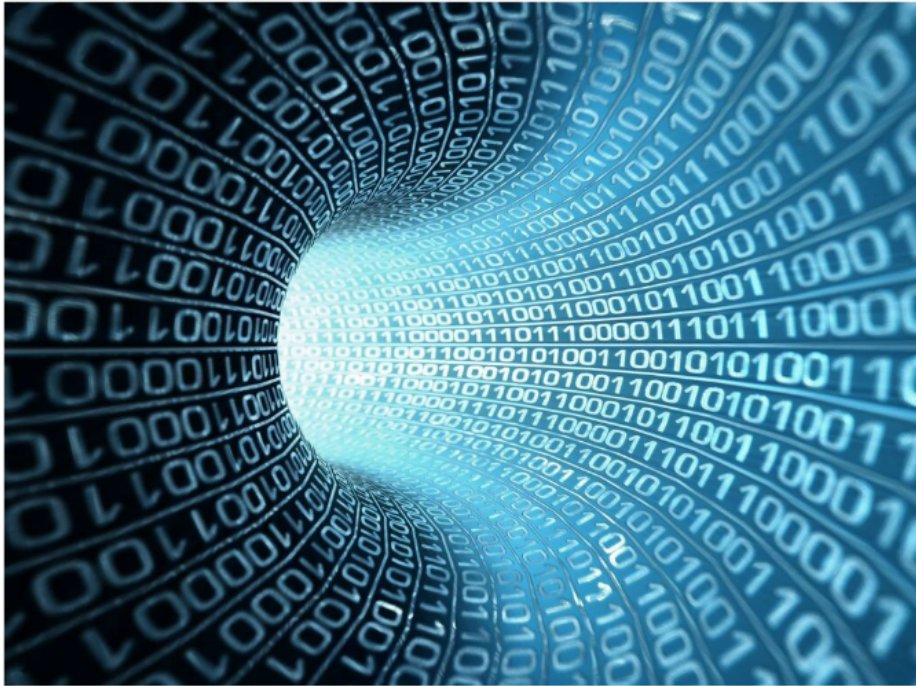


Image Source: <http://www.greenbookblog.org/2012/03/21/big-data-opportunity-or-threat-for-market-research/>

Big data refers to a vast library of data that cannot be analyzed using simple statistical quantification tools. Instead, it requires computer algorithms with fast processing speeds and programs to go through the data. These large amounts of data can tell us a lot about the behavior of humans in the environment, this in turn makes it very useful in predicting the impact of various city planning policies will on the people living in the environments and the overall economy.

TheCaseSolutions.com



Why is **BIG DATA** useful for solving civic problems?

The World's growing population is accompanied by big sets of data that give us insight on a multitude of arenas from human behavior to economic trends. Paul Waddell, a professor at UC Berkeley, created a program UrbanSim that organizes and spatially locates large amounts of data from census data (as well as other sources) in order to inform planners of the effectiveness their policies will be in both the present and the future.

TheCaseSolutions.com



**Social Context of the need
for Big Data in City &
Regional Planning**

TheCaseSolutions.com

Rural to Migration: The Great Divide

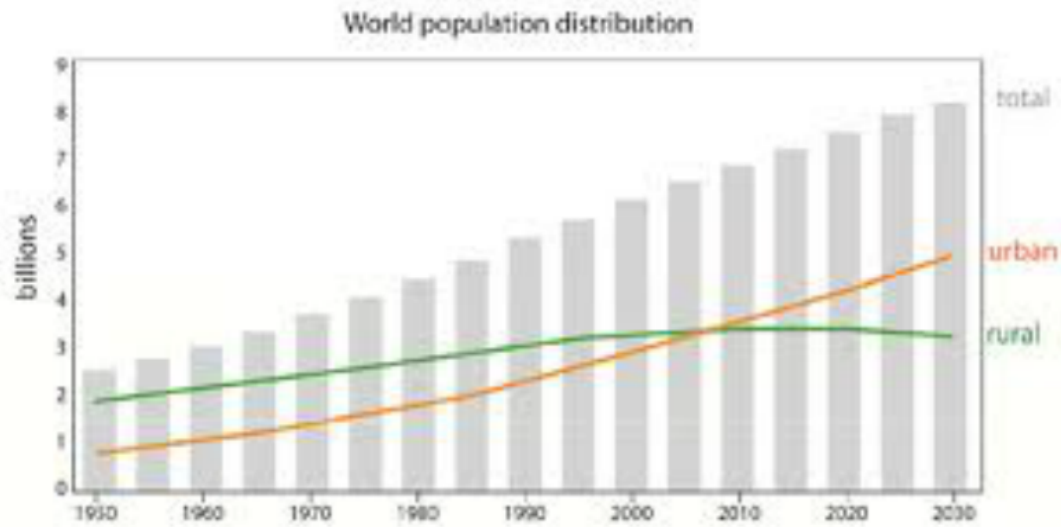


Image Source: <http://www.economicthought.net/blog/wp-content/uploads/2012/01/rural-v-urban.png>

As of three years ago, for the first time ever, the world's population living in urban areas exceeded that of those living in rural areas.

TheCaseSolutions.com

Shift in World's Economy



Image Source:<http://www.coloradoyoungfarmer.com/the-unexpected-perks-of-farming.htm>



Image Source:<http://www.gettyimages.com/detail/photo/japan-tokyo-ginza-street-pedestrians-high-res-stock-photography/200499092-001>

This is a result of our economy transitioning from one based on agricultural industry to an economy based on the transactions of goods and services.

TheCaseSolutions.com

Results of Rural to Urban Migration



Favelas in Rio de Janeiro

Image Source: <http://en.wikipedia.org/wiki/Favela>

This migration from rural to urban landscapes has put a huge strain on cities around the world, which in turn has caused city officials to implement more planning policies to accommodate for this growth.



Pollution in LA

Image Source: <http://themindbodymoderate.com/2012/02/08/is-running-in-los-angeles-bad-for-your-health/>

Negative Externalities resulting from Population Growth:

- Pollution
- Traffic Congestion
- Slum Development
- Unsatisfactory Infrastructure

TheCaseSolutions.com



Paul Wadell and UrbanSim

Image Source: http://www.utdallas.edu/news/2010/2/26-1391_Aumni-Award-Recipients-and-New-Leadership-Honor-A_article-wide.html



Image Source: <http://www.peostri.army.mil/PRODUCTS/USAGFTP/>



TheCaseSolutions.com

