

Leading Across Cultures at Michelin (A)

Breaking News! The earth is suffering drastic conditions, its tilt is changing from 23.5 degrees to 28.5 degrees. This is a shocking discovery that scientist have made. The ocean level is increasing quickly, which causes the south pole to dissolve.

Thecasesolutions.com

EXTRA!
EXTRA!



Will the Length of a Year
Change?

Thecasesolutions.com

The length of the year will not change, the rotation isn't going any faster nor slower. The tilt is now at a different position, which will cause the earth to rotate different, the speed stays the same. Seasons will be out of place and mixed up in different countries.



Will the Length of a day
change?

Thecasesolutions.com

The length of a day will not change. Even if the tilt has changed, it will still rotate at the same speed. Every four hours. The amount of sunlight will change. The north hemisphere will get more and the south hemisphere will get less. Like the earth is tilted. The way the sun hits will change on a certain place. The amount of sunlight will increase in another place.



Will the seasons change?

Thecasesolutions.com

The seasons will change. The Earth is tilted and it will rotate at the same speed. Every four hours. The amount of sunlight will change. The north hemisphere will get more and the south hemisphere will get less. Like the earth is tilted. The way the sun hits will change on a certain place. The amount of sunlight will increase in another place.



Will the seasons change?

Thecasesolutions.com

The seasons will change. The Earth is tilted and it will rotate at the same speed. Every four hours. The amount of sunlight will change. The north hemisphere will get more and the south hemisphere will get less. Like the earth is tilted. The way the sun hits will change on a certain place. The amount of sunlight will increase in another place.



Will the seasons change?

Thecasesolutions.com

The seasons will change. The Earth is tilted and it will rotate at the same speed. Every four hours. The amount of sunlight will change. The north hemisphere will get more and the south hemisphere will get less. Like the earth is tilted. The way the sun hits will change on a certain place. The amount of sunlight will increase in another place.



Will the seasons change?

Thecasesolutions.com

The seasons will change. The Earth is tilted and it will rotate at the same speed. Every four hours. The amount of sunlight will change. The north hemisphere will get more and the south hemisphere will get less. Like the earth is tilted. The way the sun hits will change on a certain place. The amount of sunlight will increase in another place.



Will the seasons change?

Thecasesolutions.com

The seasons will change. The Earth is tilted and it will rotate at the same speed. Every four hours. The amount of sunlight will change. The north hemisphere will get more and the south hemisphere will get less. Like the earth is tilted. The way the sun hits will change on a certain place. The amount of sunlight will increase in another place.



Will the seasons change?

Thecasesolutions.com

The seasons will change. The Earth is tilted and it will rotate at the same speed. Every four hours. The amount of sunlight will change. The north hemisphere will get more and the south hemisphere will get less. Like the earth is tilted. The way the sun hits will change on a certain place. The amount of sunlight will increase in another place.



Will the seasons change?

Thecasesolutions.com

The seasons will change. The Earth is tilted and it will rotate at the same speed. Every four hours. The amount of sunlight will change. The north hemisphere will get more and the south hemisphere will get less. Like the earth is tilted. The way the sun hits will change on a certain place. The amount of sunlight will increase in another place.



Will the seasons change?

Thecasesolutions.com

The seasons will change. The Earth is tilted and it will rotate at the same speed. Every four hours. The amount of sunlight will change. The north hemisphere will get more and the south hemisphere will get less. Like the earth is tilted. The way the sun hits will change on a certain place. The amount of sunlight will increase in another place.



TheCaseSolutions.com

Leading Across Cultures at Michelin (A)

Breaking News! The earth is suffering drastic conditions, its tilt is changing from 23.5 degrees to 29.5 degrees. This is a shocking discovery that scientist have made. The ocean level is increasing quickly, which causes the south pole to dissolve.

Thecasesolutions.com



Will the Length of a Year Change?

Thecasesolutions.com

The length of the year will not change, the rotation isn't going any faster nor slower. The tilt is now at a different position, which will cause the earth to rotate different, the speed stays the same. Seasons will be out of place and mixed up in different countries.



Will the Length of a day Change?

Thecasesolutions.com

The length of a day will not change. Even if the tilt has changed, it will still rotate at the same speed, twenty four hours. The amount of sunlight will change. The northern hemisphere had day time and the southern hemisphere experiences night. Since the earth's tilted, this is the sun hits will change at a certain place. The amount of sunlight will increase in another place.



Will the seasons change?

Thecasesolutions.com



TheCaseSolutions.com

Breaking News! The earth is suffering drastic conditions, its tilt is changing from 23.5 degrees to 28.5 degrees. This is a shocking discovery that scientist have made. The ocean level is increasing quickly, which causes the south pole to dissolve.

Thecasesolutions.com



The length of
faster nor s
cause the e
Seasons wil

Will the Length of a Year Change?

Thecasesolutions.com

The length of the year will not change, the rotation isn't going any faster nor slower. The tilt is now at a different position, which will cause the earth to rotate different, the speed stays the same. Seasons will be out of place and mixed up in different countries.

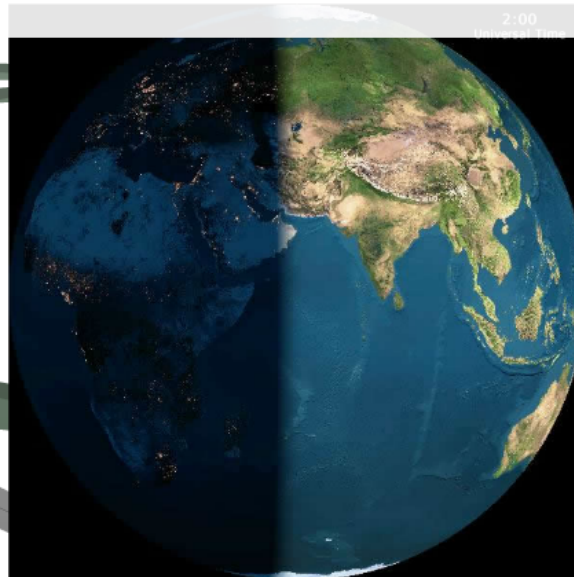


The le
will st
sunlig
southe
the wa
sunlig

Will the Length of a day Change?

Thecasesolutions.com

The length of a day will not change. Even if the tilt has changed, it will still rotate at the same speed, twenty four hours. The amount of sunlight, will change. The northern hemisphere had day time and the southern hemisphere experiences night. Since the earth is tipping, the way the sun hits will change on a certain place. The amount of sunlight will increase in another place.



Wi
Theca

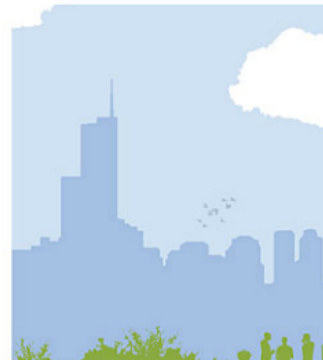
The seasons will ch
will affect how it o
different parts of t
hemisphere has su
seasons would all c
because of the tilt.
pace, the seasons
will become colder



Will the seasons change?

Thecasesolutions.com

The seasons will change because now that the earth is tipped over it will affect how it orbits the sun, and the seasons will now be in different parts of the world. For example when the northern hemisphere has summer and the southern hemisphere has winter, the seasons would all change. The reason why we have stable seasons is because of the tilt. If the tilt suddenly starts to increase at a quick pace, the seasons will all collide into one. Gradually, parts of the Earth will become colder or warmer than they previously had.



The Meltdown of the South Pole

Thecasesolutions.com

As we all know, the tilt has moved to 28.5 degrees. The South Pole will now receive more sunlight than it formerly had. The South Pole has an important role of a habitat for the wildlife. The organisms living in the environment won't handle the new climate that would take place there. There may be a mass loss of life not only in the South Pole but in various other places in the world.



Importing

Thecasesolutions.com

All species have the opportunity to be saved. We must save as many species as we can in order to keep the world that we know under control. We'll import the species to other places better suited for them, perhaps something similar to their original homes. The new season or temperatures will turn many areas into a mess. We must stay calm and keep everything in order.

ENERGY USE

Thecasesolutions.com

The energy use will gradually become a problem. We gain our energy through sunlight. Organisms all around us, the vegetation depend on the energy that the sun provides us. Certain places contain the "right" soil, or resources. Animals rely on the sun, where will they got? Human beings use the light, the electricity. Once again certain areas that were provided with the greatest energy, won't have or receive the same effect.