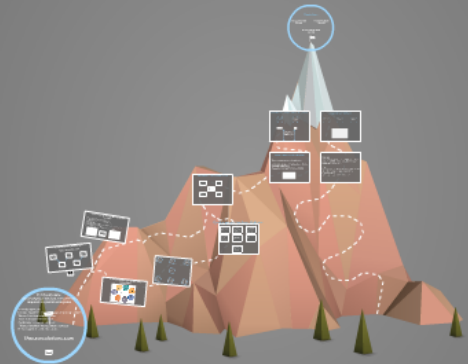


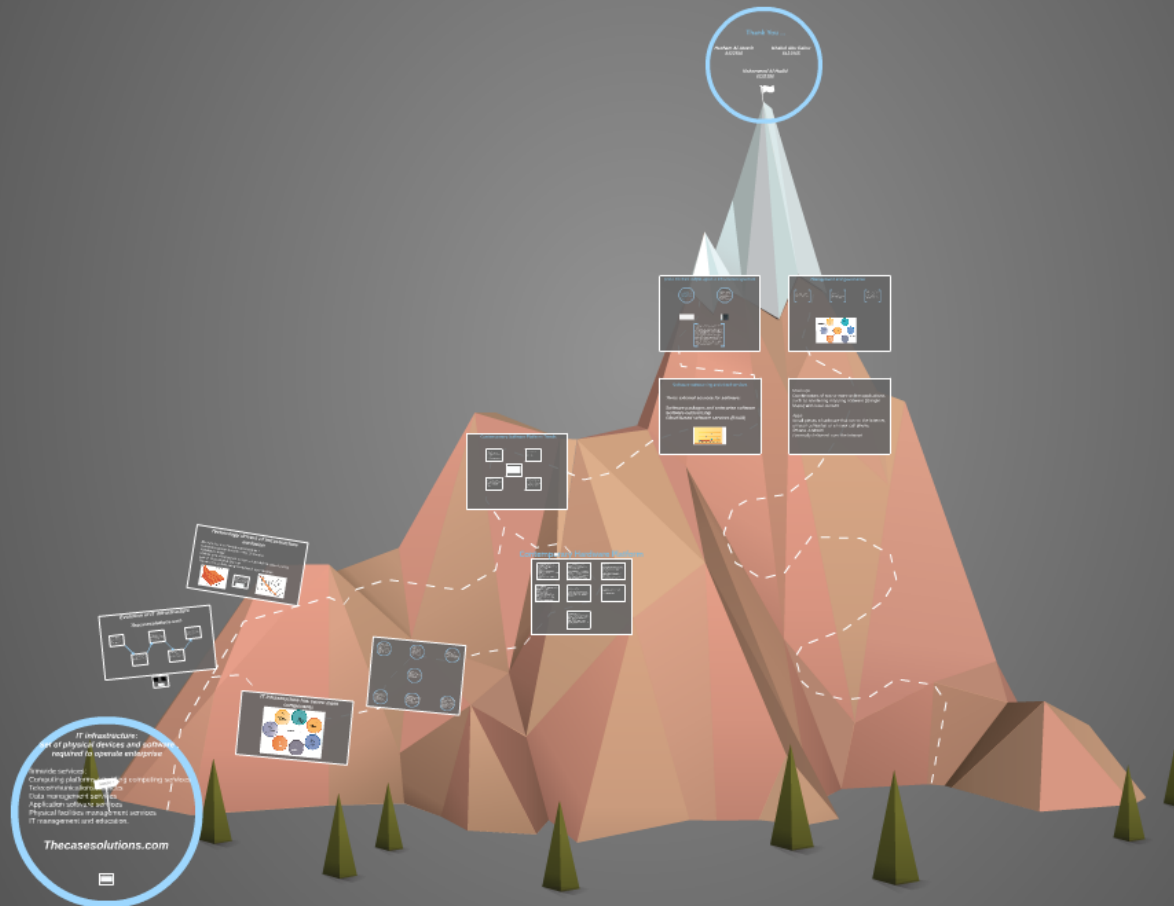
Systems Infrastructure at Google (A)

Thecasesolutions.com



Systems Infrastructure at Google (A)

Thecasesolutions.com



***IT infrastructure:
Set of physical devices and software,
required to operate enterprise***

firmwide services:

Computing platforms providing computing services

Telecommunications services

Data management services

Application software services

Physical facilities management services

IT management and education.

SUMMIT

Thecasesolutions.com

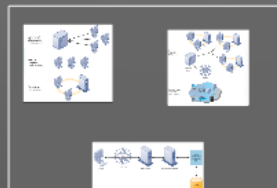
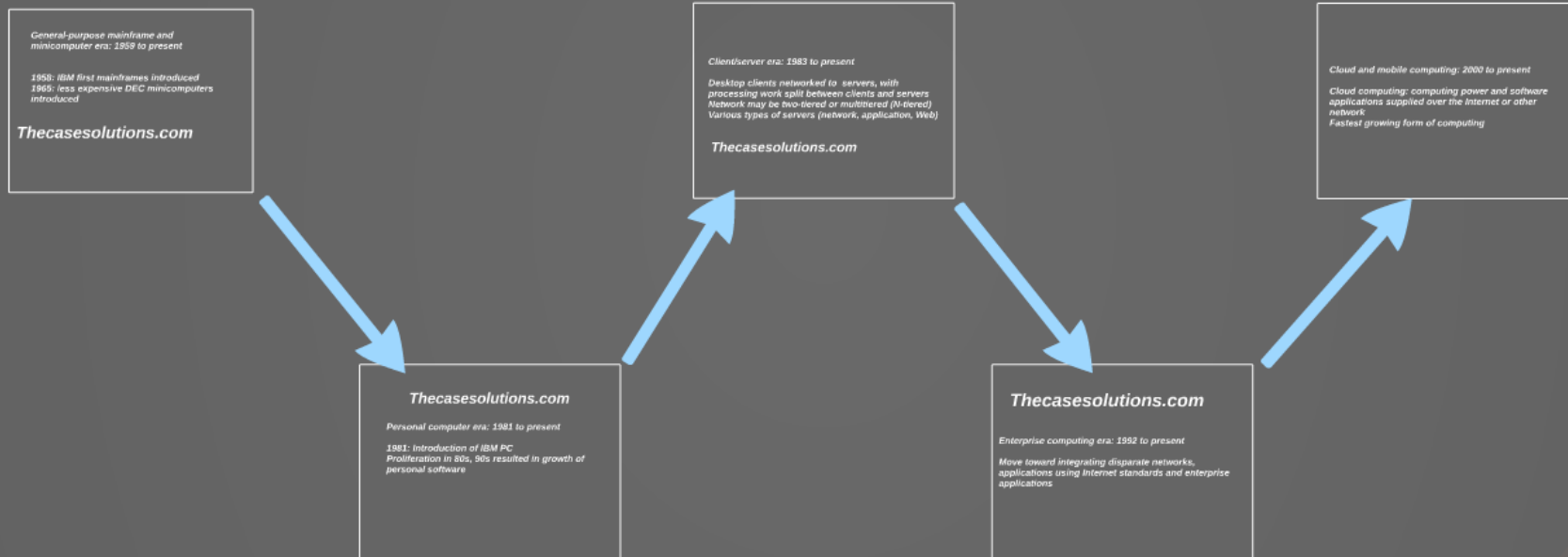


Thecasesolutions.com



Evolution of IT infrastructure

Thecasesolutions.com



*General-purpose mainframe and
minicomputer era: 1959 to present*

1958: IBM first mainframes introduced

*1965: less expensive DEC minicomputers
introduced*

Thecasesolutions.com

Thecasesolutions.com

Personal computer era: 1981 to present

1981: Introduction of IBM PC

Proliferation in 80s, 90s resulted in growth of personal software

Client/server era: 1983 to present

***Desktop clients networked to servers, with
processing work split between clients and servers
Network may be two-tiered or multitiered (N-tiered)
Various types of servers (network, application, Web)***

Thecasesolutions.com





Thecasesolutions.com

Enterprise computing era: 1992 to present

Move toward integrating disparate networks, applications using Internet standards and enterprise applications