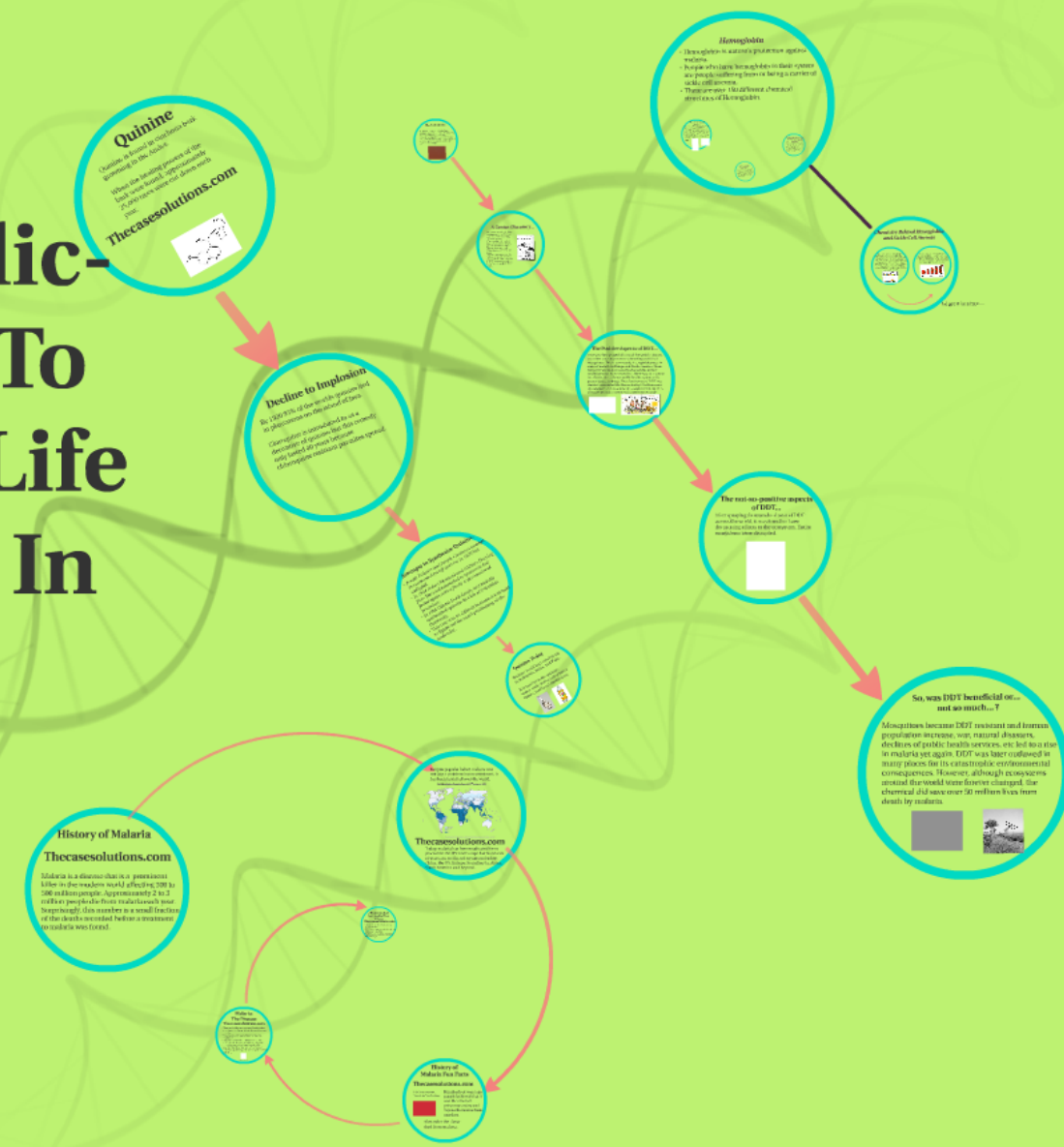




Sms For Life (A): A Public-Private Collaboration To Prevent Stock-Outs Of Life Saving Malaria Drugs In Africa

Thecasesolutions.com



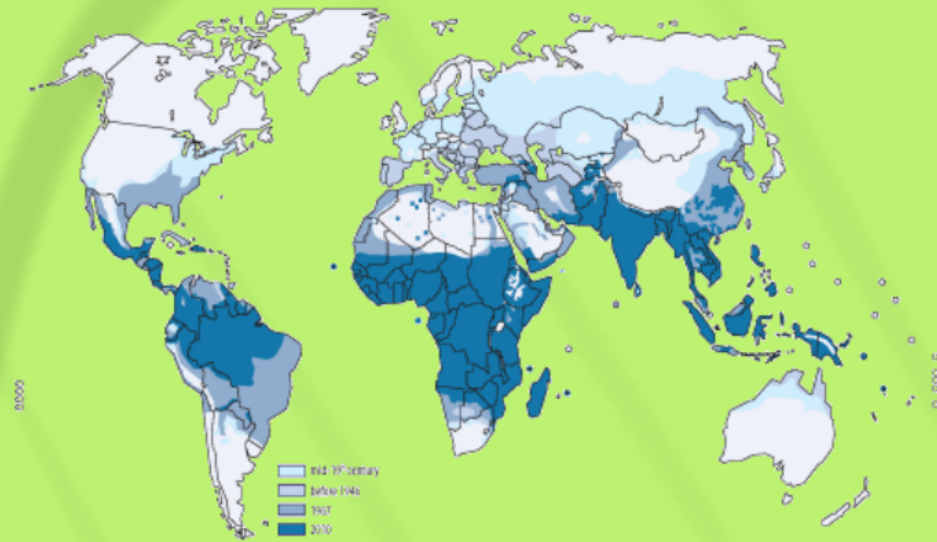
History of Malaria

Thecasesolutions.com

Malaria is a disease that is a prominent killer in the modern world affecting 300 to 500 million people. Approximately 2 to 3 million people die from malaria each year. Surprisingly, this number is a small fraction of the deaths recorded before a treatment to malaria was found.

Despite popular belief, malaria was not just a problem in one continent, it has been found all over the world.

World distribution of malaria, from mid-19th century to 2010



This map is based on the data from the World Malaria Report 2010, published by the World Health Organization.

Thecasesolutions.com

Today, malaria has been eradicated from places like the US and Europe but hundreds of years ago it effected regions including China, the US, Europe, Scandinavia, Africa, South America and beyond.

History of Malaria Fun Facts

Thecasesolutions.com

Malaria means
"bad air" in Italian.



Hundreds of years ago
people believed that it
was the result of
poisonous mists and
vapors that came from
marshes.

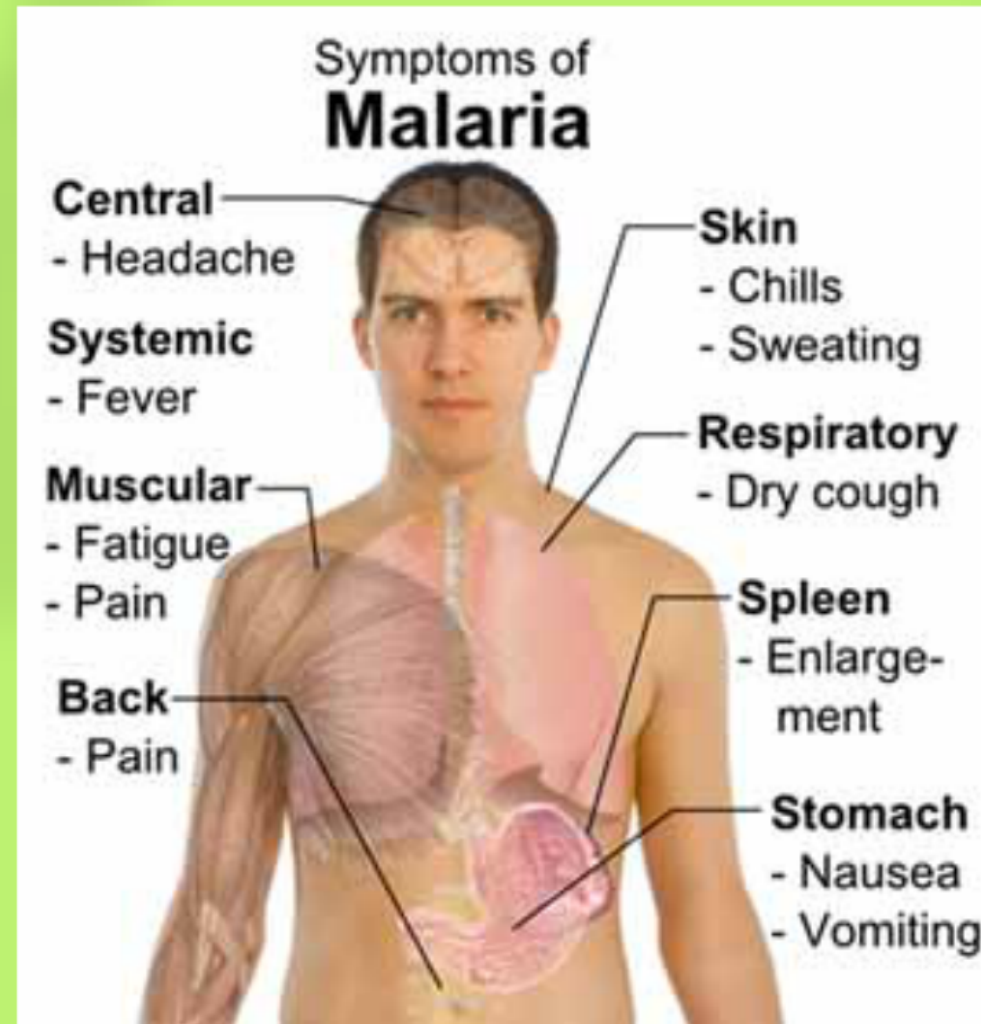
Alexander the Great
died from malaria.

Malaria: The Disease

Thecasesolutions.com

- There are 4 different parasites of malaria that effect humans, the most lethal being falciparum malaria.
- Malaria is transmitted through anopheles mosquitos.
- Symptoms of malaria include intense fever, chills, headache, and periodic muscle pains.
- In 1891 scientists developed a method of determining which species of malaria was infecting a patient by staining the patient's blood with dyes.





Thecasesolutions.com



3 Treatments have been used to Treat Malaria

Thecasesolutions.com

- Quinine -a naturally occurring plant product.
- DDT- man made products and how then can be harmful
- Hemoglobin- natural product of animal origin

Quinine

Quinine is found in cinchona bark growing in the Andes.

When the healing powers of the bark were found, approximately 25,000 trees were cut down each year.

Thecasesolutions.com

