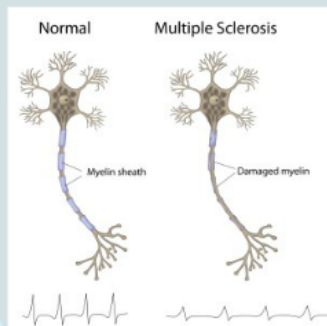






# ***What is MS?***



**CaselSM.com**

**By: Mahammed Zakarie**

### *What Body Tissue is it most affected?*

One of the body tissue it effects the most is the brain- The nervous system, slowly attacks its own myelin sheath. it can cause dizziness, personality changes etc.

### *Cells Function in MS*

T-Cell: Direct attacks on foreign substance such as bacteria, viruses, or fore-tissues. It can directly attack and destroy cells bearing anti-material.  
T-Cells are a type of White blood cell.

# CaseISM.com

## *Techniques use to diagnose the disease*

Some techniques that can help are doing yoga, using leg braces, etc.

Doctors use MRI (Magnetic Resonance Imaging). It provides clear pictures of the human body without the use of an X-ray

Treatments: Multiple Sclerosis has no discrete cure, although there are medication, Physical therapies and behavioral of the individual that can slow down and decrease the severeness of the disease and its symptoms.

DMTs (Disease Modifying Therapies)

CAM(Complementary & Alternative Medication)

or other sorts of Therapy such as:

- Physical Therapy
- Symptom management therapies
- Relapse management therapies

# CaseISM.com



## ***Techniques use to diagnose the disease***

Some techniques that can help are doing yoga, using leg braces, etc.

Doctors use MRI (Magnetic Resonance Imaging). It provides clear pictures of the human body without the use of an X-ray

**Treatments:** Multiple Sclerosis has no discrete cure, although there are medication, Physical therapies and behavioral of the individual that can slow down and decrease the severeness of the disease and its symptoms.

**DMTs (Disease Modifying Therapies)**  
**CAM(Complementary & Alternative Medication)**  
or other sorts of Therapy such as:

- Physical Therapy
- Symptom management therapies
- Relapse management therapies

# CaseISM.com





*Which drug is used to cure MS and how is it administered.*

The drug used for MS is an Interferon beta-1a (Avonex).

It's used to treat MS. Interferon is not a cure for MS but it may help to decrease the number of attacks of weakness and show the progression of the disease.

### *Side effects of this drug*

The side effect of this drug can lead to having Black spots on your body, nausea, Chest pain, dizziness etc. This Drug (Interferon beta -1a) contains amino acids.

**CaseISM.com**

## *How does the Drug treat the Disease?*

Interferon are natural substance produced by the body to help it fight against attacks such as as infections caused by viruses. The exact way that Avonex works in MS is not yet known but interferon beta seems to calm the system down.

# CaseISM.com



# ***Drug Formula***

C908 H1408 N246 O252 S7

## ***Physical and Chemical Properties for the drug***

### ***Physical***

- 1. Liquid*
- 2. White*

### ***Chemical***

- 1. powder*
- 2.*

### ***Safety***

Max doses per week is nothing above 30 micro grams (.5 ml). It must be injected. If you overdose, you must seek emergency. Must Keep the drug in the following temp.

2° - 8° c (36° -46° f)

**CaseISM.com**