

Presented By:
Shreya Gupta (B-14)
Ankit Purohit (B-40)
Shweta Wadhvani (B-64)
Thecasesolutions.com

The Morrison Company



Thecasesolutions.com

Morrison Company
SPECIALIZING IN ENGINEERED
HANDLING SYSTEMS SINCE 1929

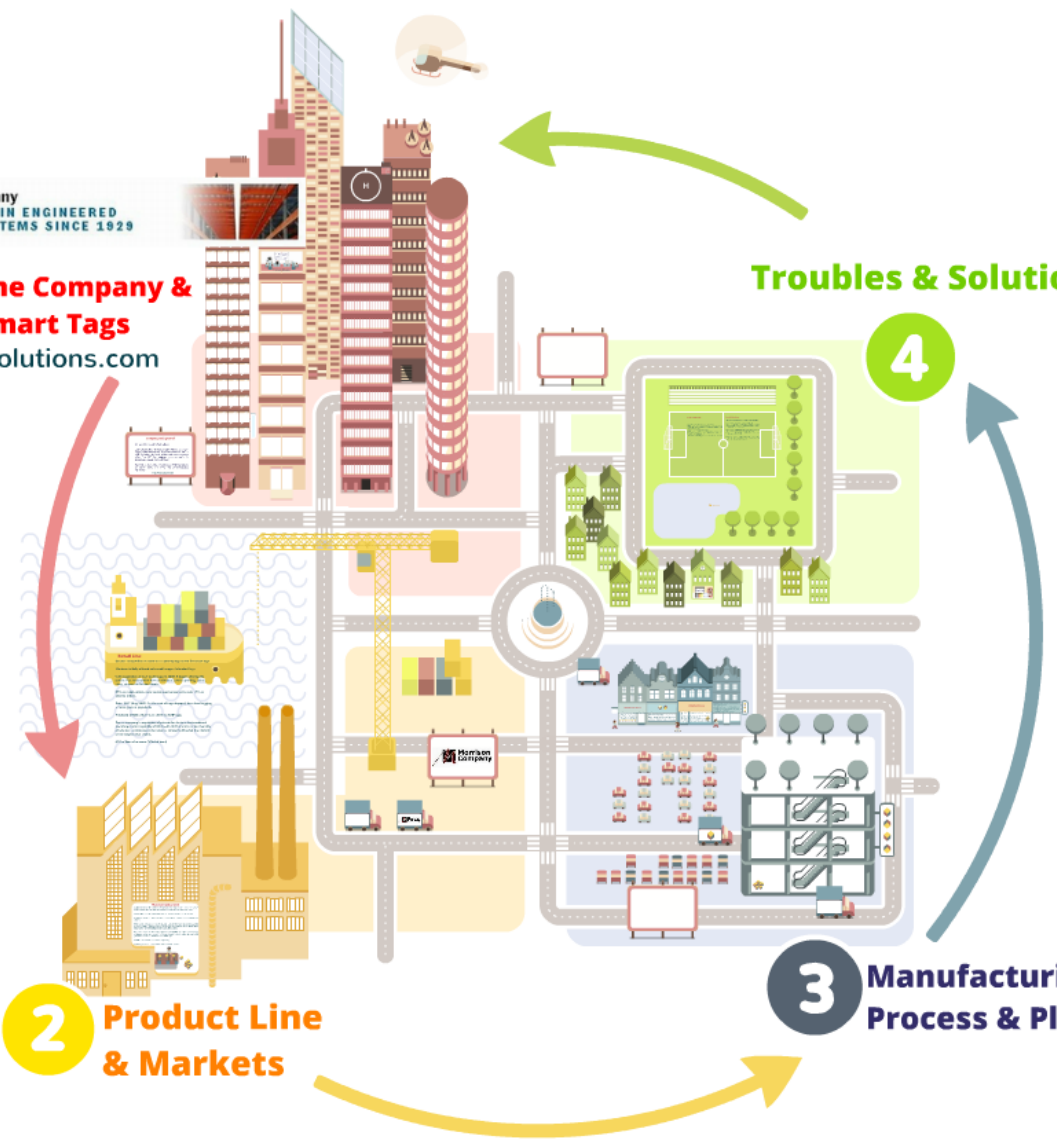
1 The Company & Smart Tags
Thecasesolutions.com

2 Product Line & Markets

Troubles & Solutions

3 Manufacturing Process & Planning

4



Presented By:
Shreya Gupta (B-14)
Ankit Purohit (B-40)
Shweta Wadhvani (B-64)
Thecasesolutions.com

The Morrison Company

Morrison Company
SPECIALIZING IN ENGINEERED
HANDLING SYSTEMS SINCE 1929

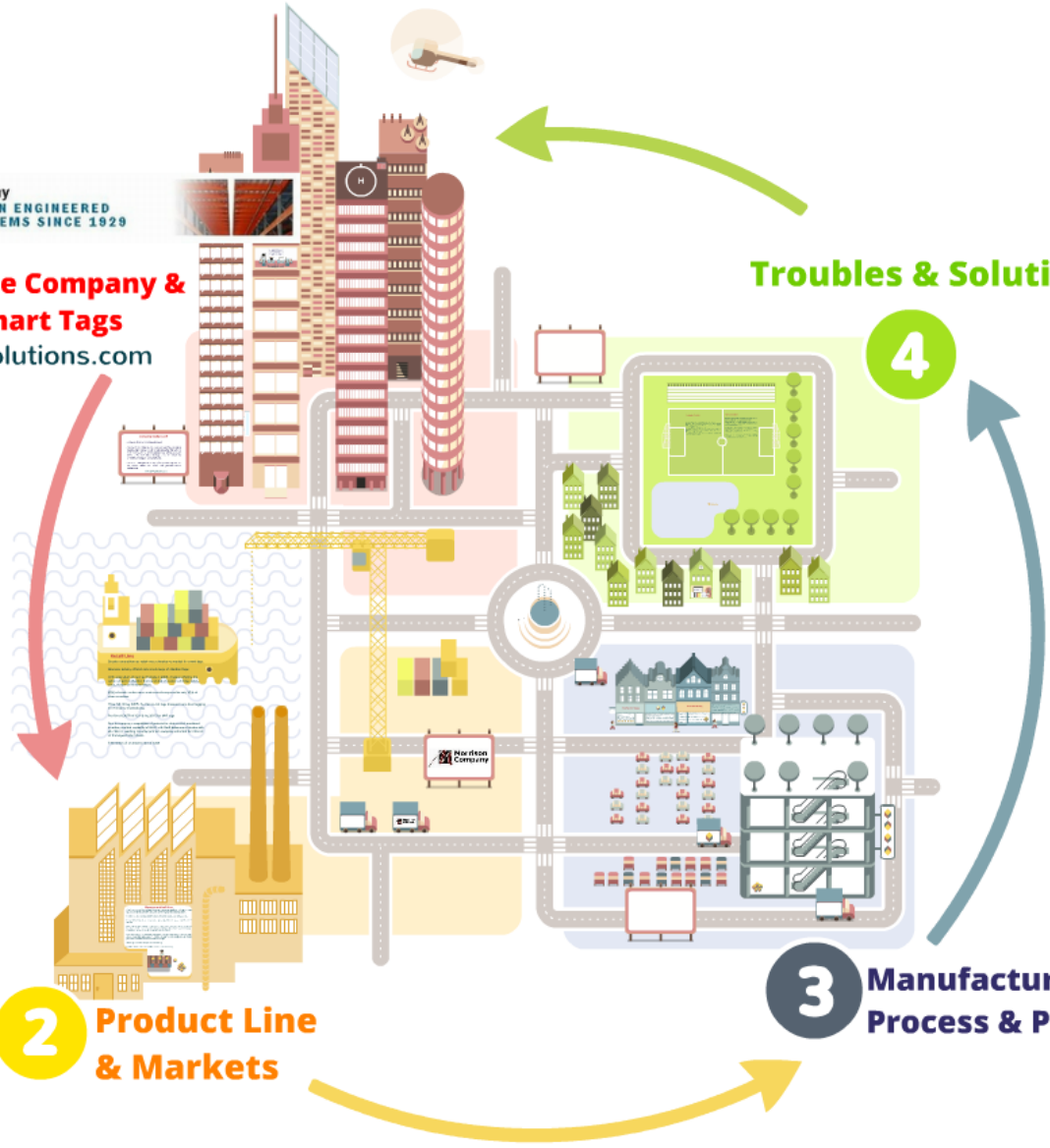
1 The Company & Smart Tags
Thecasesolutions.com

Troubles & Solutions

4

2 Product Line & Markets

3 Manufacturing Process & Planning



Thecasesolutions.com

Presented By:

Shreya Gupta (B-14)

Ankit Purohit (B-40)

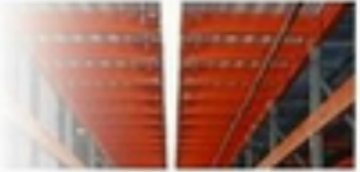
Shweta Wadhvani (B-64)

Thecasesolutions.com





Morrison Company
SPECIALIZING IN ENGINEERED
HANDLING SYSTEMS SINCE 1929



1 The Company & Smart Tags

Thecasesolutions.com

Company Background

- Set up in 1929 by GEI (General Electric Industrial)
- The brand of GEI, as Morrison Company, and the increasing range of engineering services including the use of RFID technology to track products and cases at point of sale. They left the shipping chain on route to avoid any supply chain problems.
- Morrison developed and manufactured RFID tags across the world, mainly for retail and pharmaceutical industries.

Thecasesolutions.com

Company Background

- Set up in 2003 by CEO Jason Robbins.
- Idea behind setting up this company was the emerging supply chain management trends including the use of RFID technology to track pallets and cases of goods after they left the shipping dock en route to downstream supply chain positions.
- Morrison developed and manufactured RFID tags known as smart labels for retail and pharmaceutical industries.

Thecasesolutions.com

Thecasesolutions.com



RFID

- Radio-frequency identification (RFID) is the wireless non-contact use of radio-frequency electromagnetic fields to transfer data, for the purposes of automatically identifying and tracking tags attached to objects. Some tags require no battery and are powered and read at short ranges via magnetic fields (electromagnetic induction). Others use a local power source and emit radio waves (electromagnetic radiation at radio frequencies). The tag contains electronically stored information which may be read from up to several meters away. Unlike a bar code, the tag does not need to be within line of sight of the reader and may be embedded in the tracked object.

Thecasesolutions.com

- RFID tags are used in many industries. An RFID tag attached to an automobile during production can be used to track its progress through the assembly line. Pharmaceuticals can be tracked through warehouses. Livestock and pets may have tags injected, allowing positive identification of the animal.

Thecasesolutions.com



RFID

- Radio-frequency identification (RFID) is the wireless non-contact use of radio-frequency electromagnetic fields to transfer data, for the purposes of automatically identifying and tracking tags attached to objects. Some tags require no battery and are powered and read at short ranges via magnetic fields (electromagnetic induction). Others use a local power source and emit radio waves (electromagnetic radiation at radio frequencies). The tag contains electronically stored information which may be read from up to several meters away. Unlike a bar code, the tag does not need to be within line of sight of the reader and may be embedded in the tracked object.

Thecasesolutions.com

- RFID tags are used in many industries. An RFID tag attached to an automobile during production can be used to track its progress through the assembly line. Pharmaceuticals can be tracked through warehouses. Livestock and pets may have tags injected, allowing positive identification of the animal.



Thecasesolutions.com