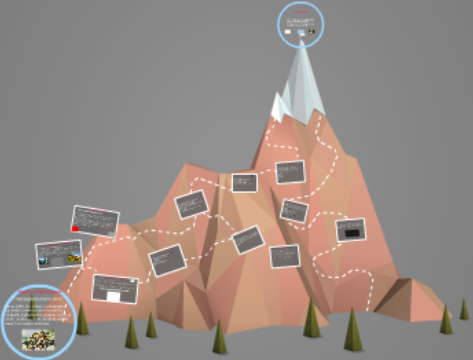
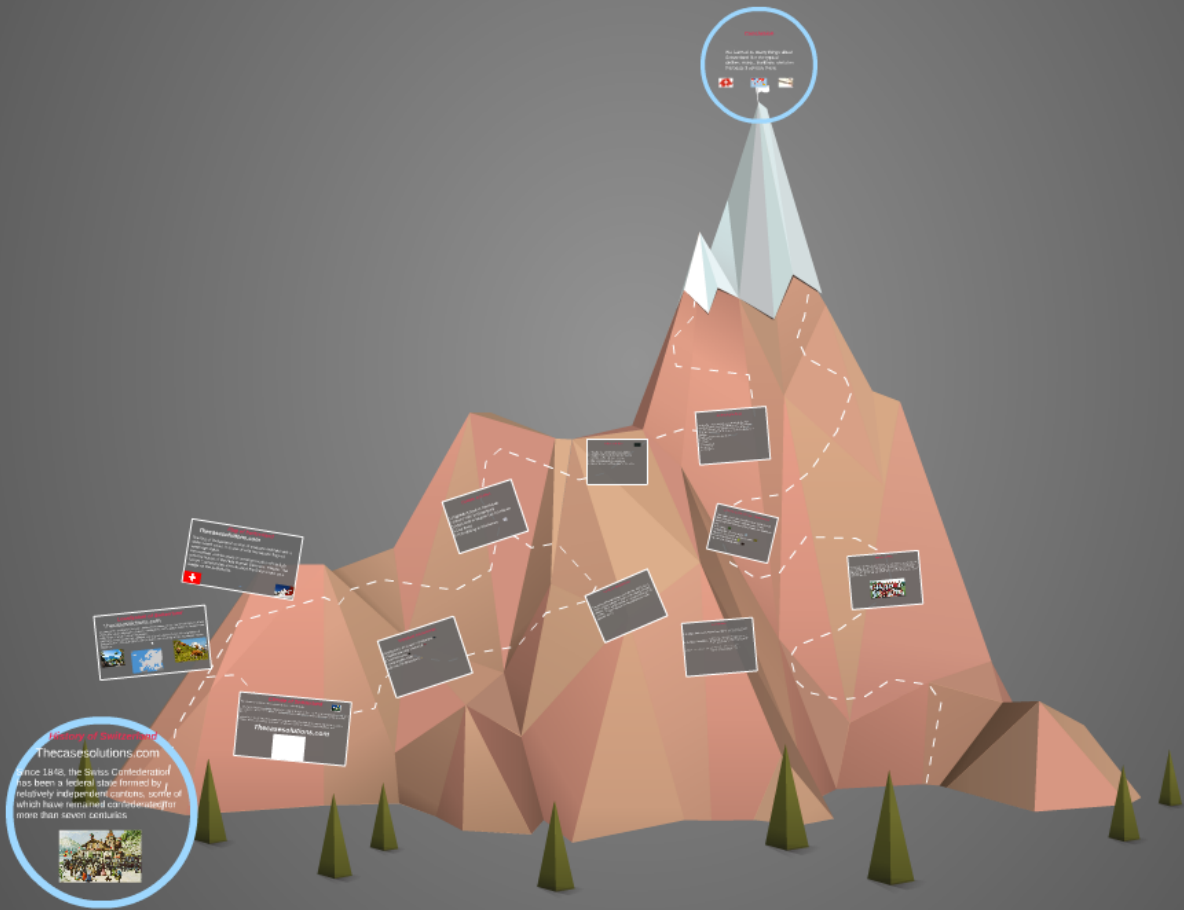


Swiss International - The End of A Dream
Thecasesolutions.com



Swiss International - The End of A Dream

Thecasesolutions.com



History of Switzerland

Thecasesolutions.com

Since 1848, the Swiss Confederation has been a federal state formed by relatively independent cantons, some of which have remained confederated for more than seven centuries



Localization of Switzerland

Thecasesolutions.com

Located in the continent of Europe, Switzerland covers 39,997 square kilometers of land and 1,280 square kilometers of water, making it the 137th largest nation in the world with a total area of 41,277 square kilometers.

Switzerland was founded as a distinct and original nation in 1291. The population of Switzerland is 7,655,628 (2012) and the nation has a density of 191 people per square kilometer.



Thecasesolutions.com





Thecasesolutions.com

Flag of Switzerland

Thecasesolutions.com

The flag of Switzerland consist of a square red field with a white Greek cross. It is one of only two square flags of sovereign states.

He received a white cross in commemoration of his fight with the troops of the Holy Roman Germanic Empire. The former Confederates already used the Swiss cross as a badge on the battlefields.





Thecasesolutions.com

Climate of Switzerland



The climate is moderate with no excessive heat, cold or humidity.

From July to August the daytime temperature range is 18 to 28 °C (65° - 82° F) and from January to February the range is -2 to 7 °C (28° - 45° F). In spring and autumn, the daytime temperature range is 8 to 15 °C (46° - 59° F).

Depending on the altitude the temperature range may vary. It is highly recommended to visitors to pack a sweater, good walking shoes, sunscreen, sunglasses, a compact umbrella and/or a light rain coat.

Thecasesolutions.com

