



Thecasesolutions.com

Design Descriptions
Thecasesolutions.com



Thecasesolutions.com

The building is connected to the ground floor by a series of stairs and a ramp.



Thecasesolutions.com

Why Build High?



Levels of and Construction
Development



Workflow and Construction
Building



Interior View



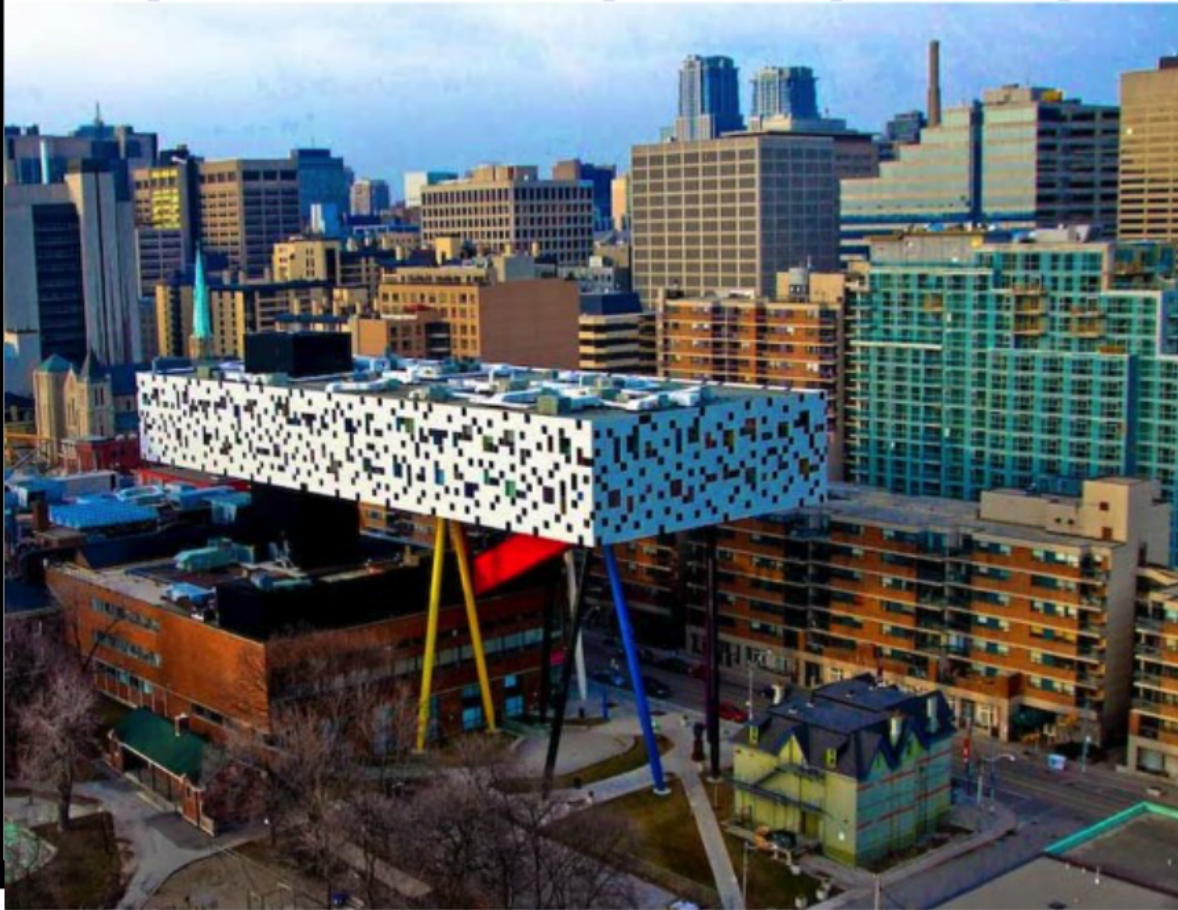
Thecasesolutions.com

Why Build High?



Shar Matin (A)

Thecasesolutions.com



The 'table-top' structure is an expansion space to the present Ontario Design College.

It has been awarded an RIBA; an "Award of Excellence" from the Toronto Architecture and Urban Design Awards, the City's highest design award handed out every two years.

Described as being:

"courageous, bold and just a little insane."

Design Description

Thecasesolutions.com

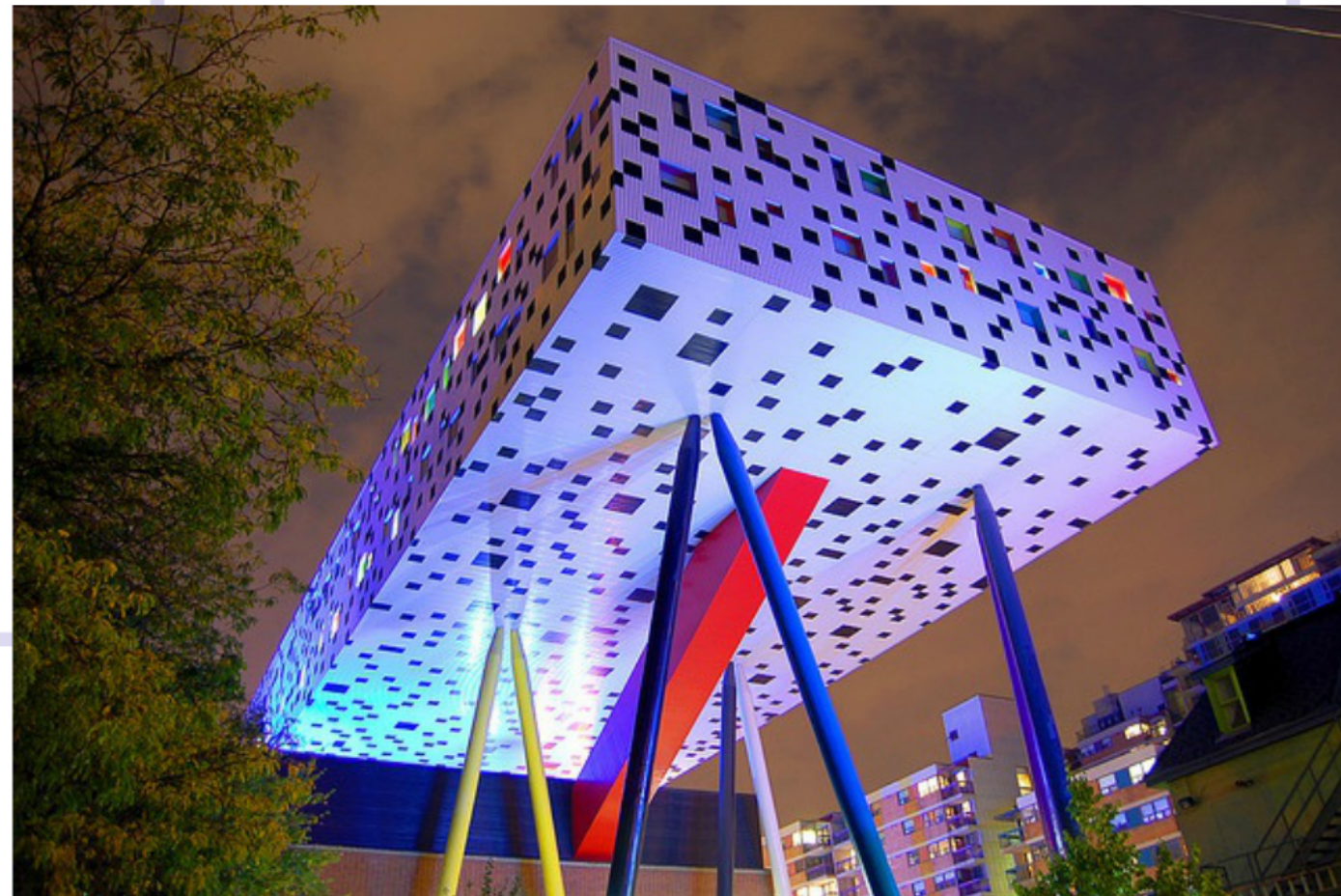
The design selected is of a two-story rectangular volume, with striking black and white pixelated skin which intentionally blurs the idea of scale of the building.

It provides a total estimated floor area of 10,700m² of flexible studio and teaching space for students.

It is set 26m above ground supported on 12 brightly multi-colored steel columns which appear like toothpicks next to the huge rectangular volume! This gives the impressions of the structure being suspended in mid-air.



Thecasesolutions.com





The building is connected to the rest of the Faculty via a core of escalator and stairs.

Thecasesolutions.com



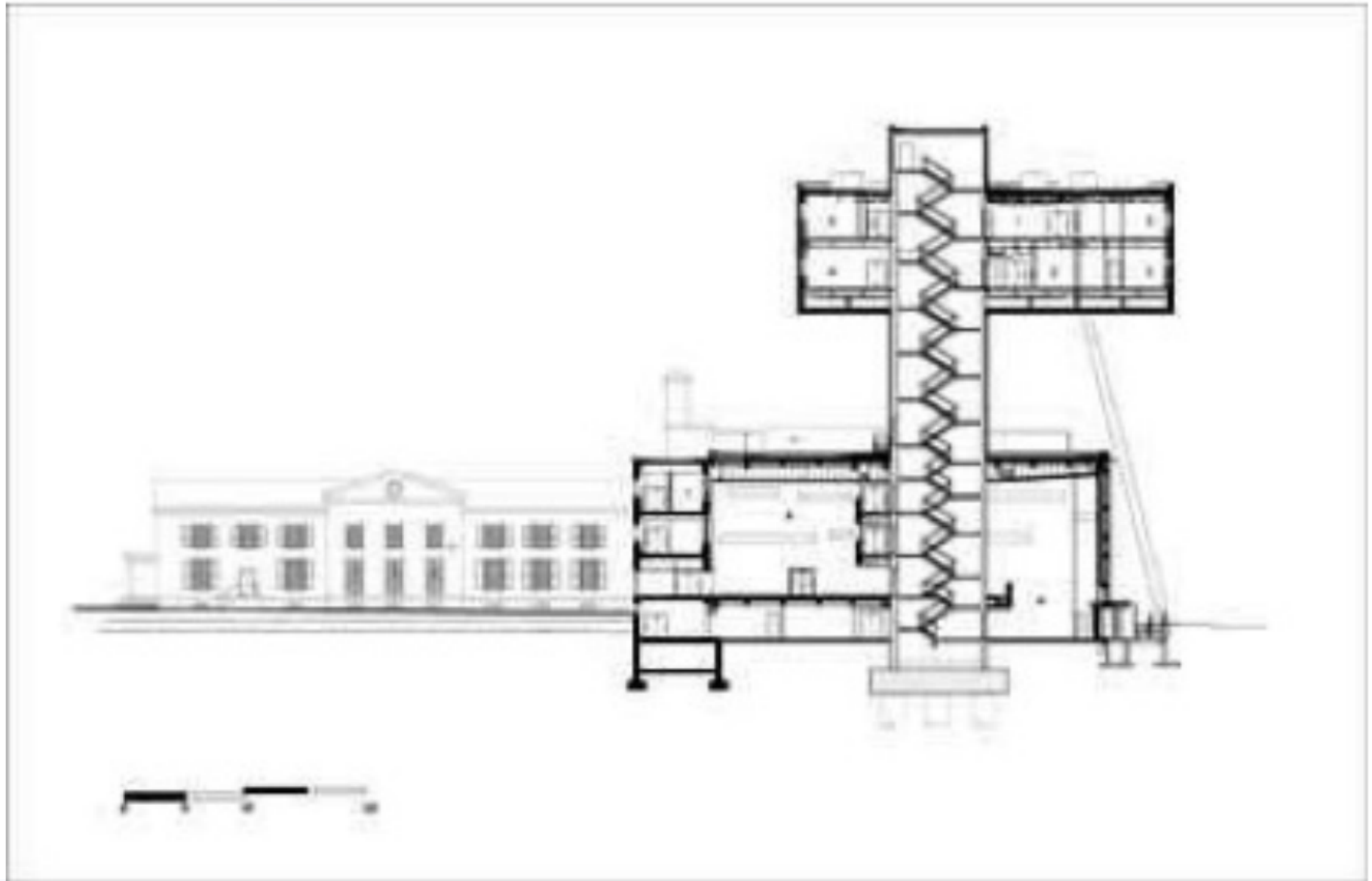
The void space created at street level below the structure was transformed as a Park Space.

It serves as an outdoor expansion area for the college's activities and also provides a connection between Grange Park and McCaul street neighborhood.

Thecasesolutions.com



Thecasesolutions.com



Thecasesolutions.com

Why Build High?



Students and neighbors of OCAD were consulted and involved in the design process.

Common insights were to:

- Connect Grange Park with McCaul Street
- Preserve the views across McCaul Street and not hinder the Victorian building skyline.
- Create new outdoor public space that improved pedestrian circulation

Thecasesolutions.com

Why Build High?

Another reason to build 26m above ground was to provide students with a view. It is nice to extend the eye while working on their computers.

Furthermore very deep windows were designed, which allowed the students to sit, lie or sleep on them.

