

# Semi-Submersible Heavy-Lift Transport (D): Offshore Heavy Transport

Thecasesolutions.com



Thecasesolutions.com

**The NBR crawler: A new generation Mobile Heavy Lift Cargo System**

Thecasesolutions.com

The NBR Crawler is the ultimate in heavy-duty mobile heavy lift transport. It is designed to transport loads of up to 300 tons. The crawler is equipped with a fully automatic control system and a fully automatic steering system. It is also equipped with a fully automatic braking system. The crawler is designed to be used in a wide range of applications, including the transport of large pipes, tanks, and other heavy loads.

**The NBR Team**

Thecasesolutions.com

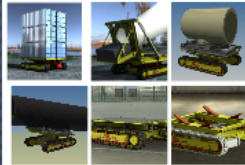


**Vehicle Types**

Thecasesolutions.com



**Photos**



**The advantages**

Thecasesolutions.com

The NBR crawler is the ultimate in heavy-duty mobile heavy lift transport. It is designed to transport loads of up to 300 tons. The crawler is equipped with a fully automatic control system and a fully automatic steering system. It is also equipped with a fully automatic braking system. The crawler is designed to be used in a wide range of applications, including the transport of large pipes, tanks, and other heavy loads.

## Examples of operations



## MOVIES

NBR Crawler in action



First presentation      First driving with calibration weights      Process at the client 300 tons of mega monopile

## Information and Contacts

Thank you for your Attention!



NBR Offshore Logistics GmbH  
 Schaffhousenstr. 146  
 CH-8302 Kloten  
 Telefon: +49 (0) 173 3814 805  
 Telefon: +41 (0) 762 071 092  
 Geschäftsführer: Nikolaus Berzen Ratzel  
 E-Mail: info@nbr-offshore-logistics.ch

# **Semi-Submersible Heavy-Lift Transport (D): Offshore Heavy Transport**

**Thecasesolutions.com**





# Thecasesolutions.com



Thecasesolutions.com

The NBR crawler: A new generation  
Modular Heavy Lift Cargo System

Thecasesolutions.com

The NBR-Crawler family was developed in cooperation with our Partners in Germany and Switzerland for transporting cargoes of up to approx. 10.400 tons.

Another task was finding a way to assemble components on site without requiring additional cranes. The units should also be suitable for rough terrain usage.

The NBR-Crawlers can fulfil all of those requirements. This new development was necessary, because the size and the weight of the components to be transported, as well as the requirements placed upon the transport system are constantly increasing. Hence, it was necessary to develop a new and innovative system. And now, after a development time of four and a half years, we finally succeeded in this objective. Now the NBR-Crawlers are available and may be manufactured and delivered upon request.



The NBR Team

Thecasesolutions.com

## Examples of operations

A new generation of Heavy Lift  
Cargo System



Das Heavy Lift Cargo System  
der neuen Generation

# Thecasesolutions

## The NBR crawler: A new generation Modular Heavy Lift Cargo System



### Thecasesolutions.com

The NBR-Crawler family was developed in cooperation with our Partners in Germany and Switzerland for transporting cargoes of up to approx. 10.400 tons.

Another task was finding a way to assemble components on site without requiring additional cranes. The units should also be suitable for rough terrain usage

The NBR-Crawlers can fulfil all of those requirements. This new development was necessary, because the size and the weight of the components to be transported as well as the requirements placed upon the transport system are constantly increasing. Hence, it was necessary to develop a new and innovative system. And now, after a development time of four and a half years, we finally succeeded in this objective. Now the NBR-Crawlers are available and may be manufactured and delivered upon request.

## The NBR Team



# Thecasesolutions.com

Another task was finding a way to assemble components on site without requiring additional cranes. The units should also be suitable for rough terrain usage

after a development time of four and a half years, we finally succeeded in this objective. Now the NBR-Crawlers are available and may be manufactured and delivered upon request.

## The NBR Team



# Thecasesolutions.com

### Thecasesolutions.com



**Nikolaus Berzen Ratzel**

Managing Director  
Marketing  
Design & Development



**Heiner Birck**

Project Manager  
Engineering & Design



**Jens Monsess**

Marketing & Service

### Thecasesolutions.com



**Mr. Prof. Dr.-Ing.  
Choong-Yul Son**

Agent for Asia-Pacific



**Dipl.- Ing. Uwe Thomas**

NBR Sales Agent for  
Northeast Europe, Russia  
and the Commonwealth of  
Independent States



**Mr. Adeola Ikuomola**

Agent for Africa

## Vehicle Types

# Thecasesolutions.com



**Nikolaus Berzen Ratzel**

Managing Director  
Marketing  
Design & Development



**Heiner Birck**

Project Manager  
Engineering & Design



**Jens Monsess**

Marketing & Service

# Thecasesolutions.com



**Mr. Prof. Dr.-Ing.  
Choong-Yul Son**

Agent for Asia-Pacific



**Dipl. - Ing. Uwe Thomas**

NBR Sales Agent for  
Northeast Europe, Russia  
and the Commonwealth of  
Independent States



**Mr. Adeola Ikuomola**

Agent for Africa



# Vehicle Types

**Thecasesolutions.com**

---



**Photos**

---





# The advantages

---



## Thecasesolutions.com

A load distribution frame is not needed.

The full load may be applied on the middle.

The NBR-Crawlers® may be placed directly under the component to be transported.

The respective receptacle is located on top of the load cylinder and is connected via a ball socket connection.

As required, the NBR-Crawlers® may be connected via drawbars.

The NBR-Crawlers® can drive on concrete-paved or tarred surfaces as well as on normal firm and compacted surfaces.

Every NBR-Crawler® is equipped with a power-pack and control system of its own, which gives Crawler sufficient power and flexibility.

The control system is operated via a touch screen and a control unit.  
Up to 20 NBR-Crawlers® may be operated synchronously via a radio or cable connection.

The development of the NBR-Crawlers® was made possible by our many years of experience in the heavy cargo field as well as our good longterm relationships with our customers in Asia and Europe.