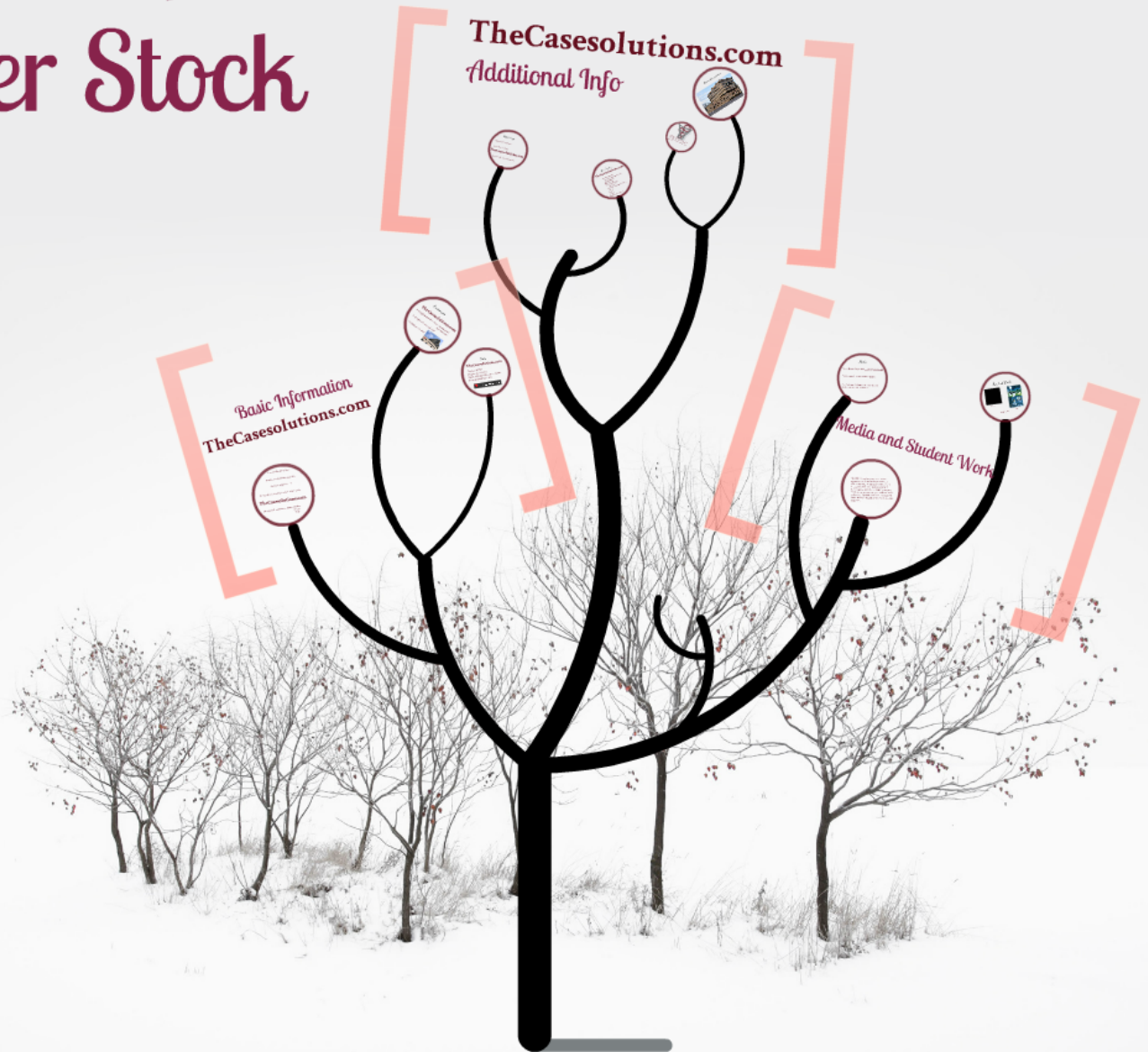
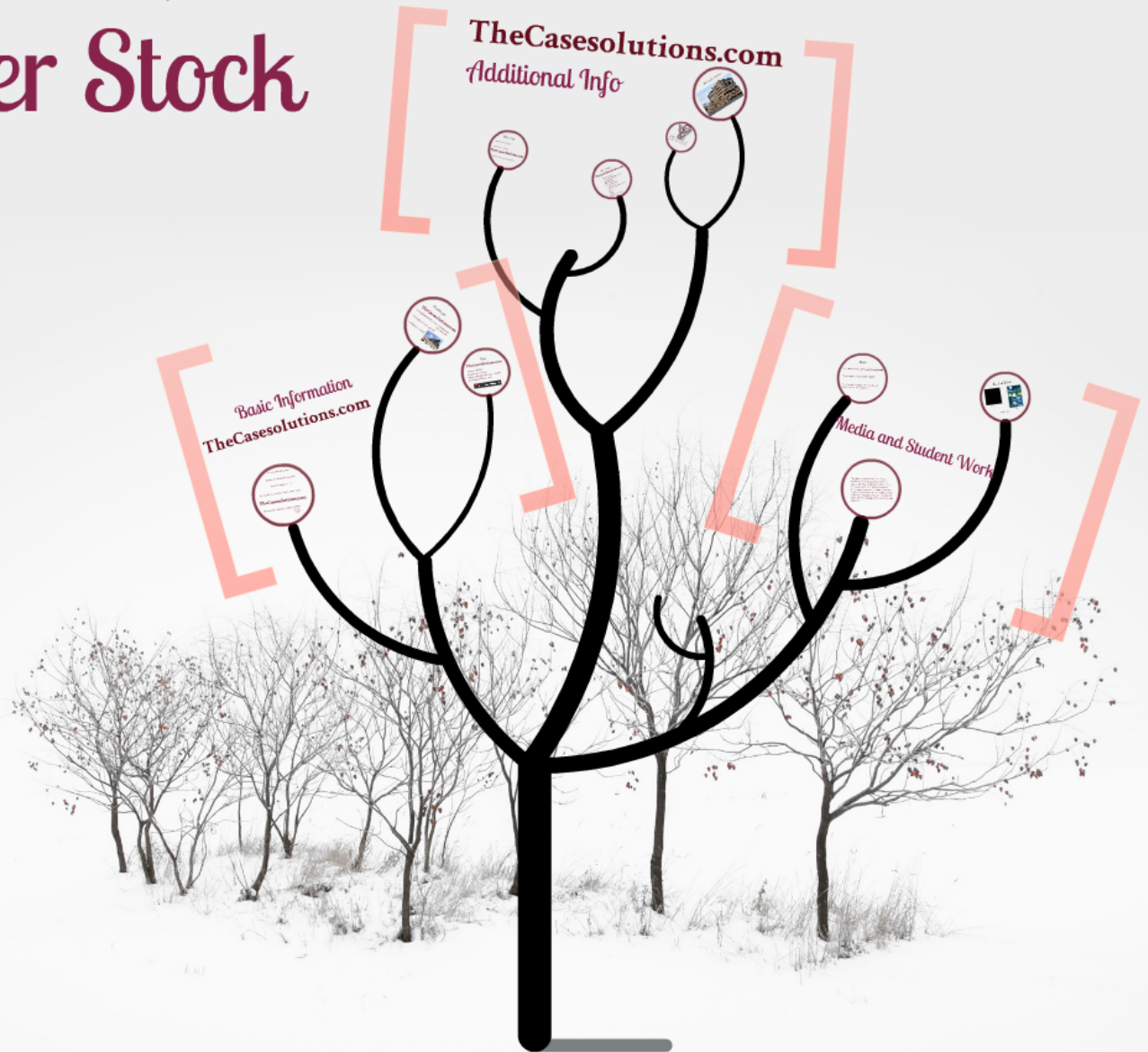


Oriental Fortune Capital: Building a Better Stock Exchange



TheCasesolutions.com

Oriental Fortune Capital: Building a Better Stock Exchange



TheCasesolutions.com

Basic Information

TheCasesolutions.com

Location: Brookline, Mass.
Number of students attending: 1483
Student/Faculty ratio: 13:1
Average GPA of attending students: 2.98uw 3.22w

TheCasesolutions.com

Average SAT of attending students: 480 Math
488 CR
535 W

Percentages

TheCasesolutions.com

% of sophomores that remain: Full time: 63%
% of applicants accepted: 36% Part time: 48%
Graduation rate: 44%



Costs

TheCasesolutions.com

Tuition: \$92700
Program Fees: \$5560
Books and Digital Resources: \$2000
Room & Board: \$111,300



Location: Brookline, Mass.

Number of students attending: 1483

Student/Faculty ratio: 13:1

Average GPA of attending students: 2.98uw 3.22w

TheCasesolutions.com

Average SAT of attending students: 480 Math

488 CR

535 W

Percentages

TheCasesolutions.com

% of sophomores that return: Full time: 63%
Part time: 48%

% of applicants accepted: 36%

Graduation rate: 44%



Costs

TheCasesolutions.com

Tuition: \$92700

Program Fees: \$5560

Books and Digital Resources: \$2000

Room & Board: \$111,300

Ai The New England Institute of Art®

TheCasesolutions.com

Additional Info



Scholarships

Academic Merit Scholarship

Inabeth Miller Scholarship

TheCasesolutions.com

National Art Honor Society Scholarship

Core Courses

TheCasesolutions.com

Freshman Seminar

Contemporary Communications

English Selections

Media Literacy

Humanities Selections

College Algebra

Advanced College Algebra and Trig

Calculus

Physics

Acoustics

Social Science Selection