

Magna International, Inc. (A)

Shanghai Cooperation Organization
Thecasesolutions.com

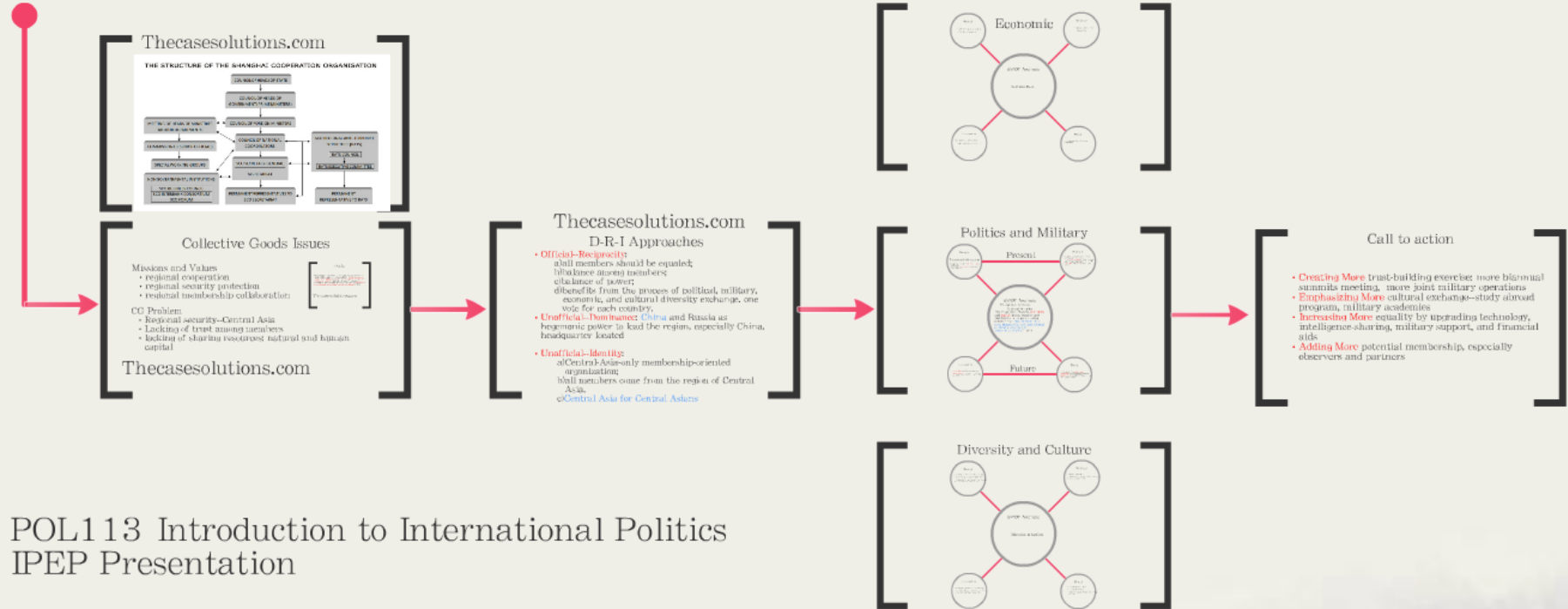
Introduction
• an **intergovernmental** international organization founded in Shanghai on 15 June 2001

Members
• China, **Russia**, Kazakhstan, Kyrgyzstan, Tajikistan and Uzbekistan. Its working languages are Chinese and Russian."

Region and Area
• 30 million km²
• about three fifths of Eurasia, with a population of **1,455 billion**, about a **quarter** of the world's total.



Thecasesolutions.com



POL113 Introduction to International Politics
IPEP Presentation

Lichao Zhang
Keri Teramae
May 6th, 2015

Magna International, Inc. (A)

Shanghai Cooperation Organization
Thecasesolutions.com

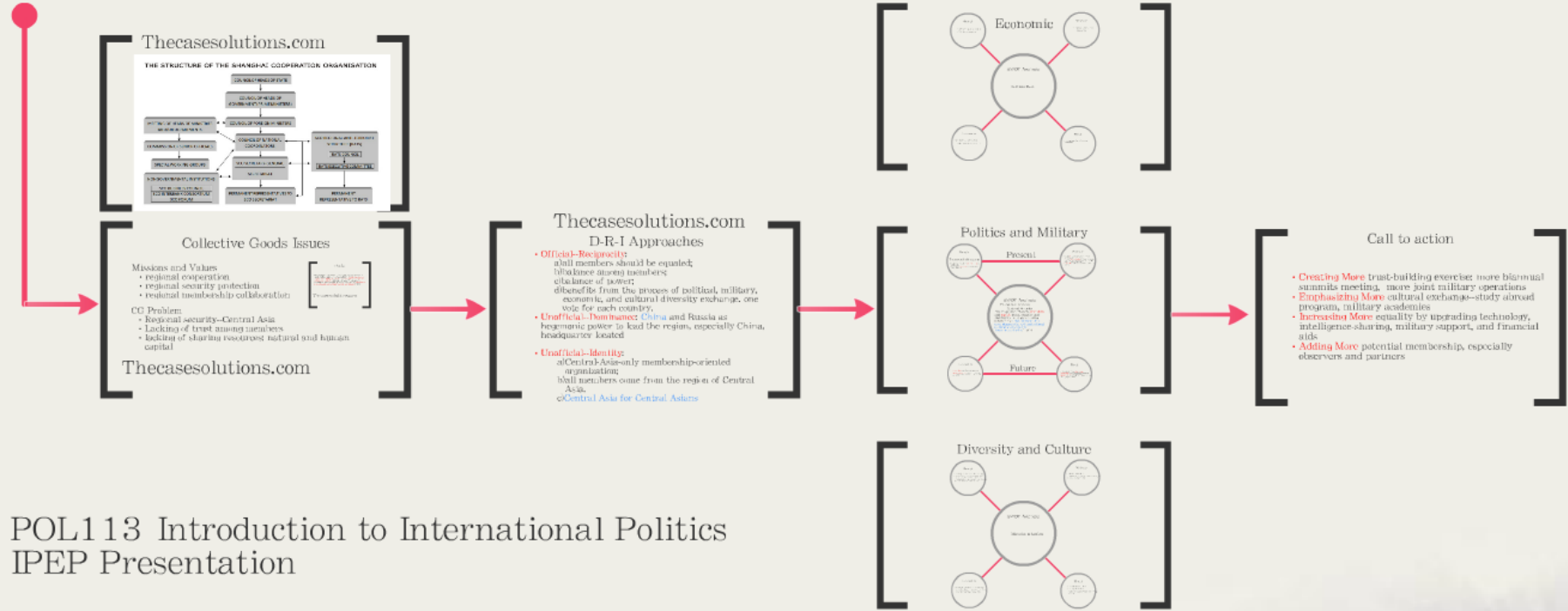
Introduction
an **intergovernmental** international organization founded in Shanghai on 15 June 2001

Members
• China, **Russia**, Kazakhstan, Kyrgyzstan, Tajikistan and Uzbekistan. Its working languages are Chinese and Russian."

Region and Area
• 30 million km²
• about three fifths of Eurasia, with a population of **1.455 billion**, about a **quarter** of the world's total.



Thecasesolutions.com



POL113 Introduction to International Politics
IPEP Presentation

Lichao Zhang
Keri Teramae
May 6th, 2015

Shanghai Cooperation Organization

Thecasesolutions.com

Introduction

- an **intergovernmental international** organization founded in Shanghai on 15 June 2001

Members

- **China, Russia**, Kazakhstan, Kyrgyzstan, Tajikistan and Uzbekistan. Its working languages are Chinese and Russian.”

Region and Area

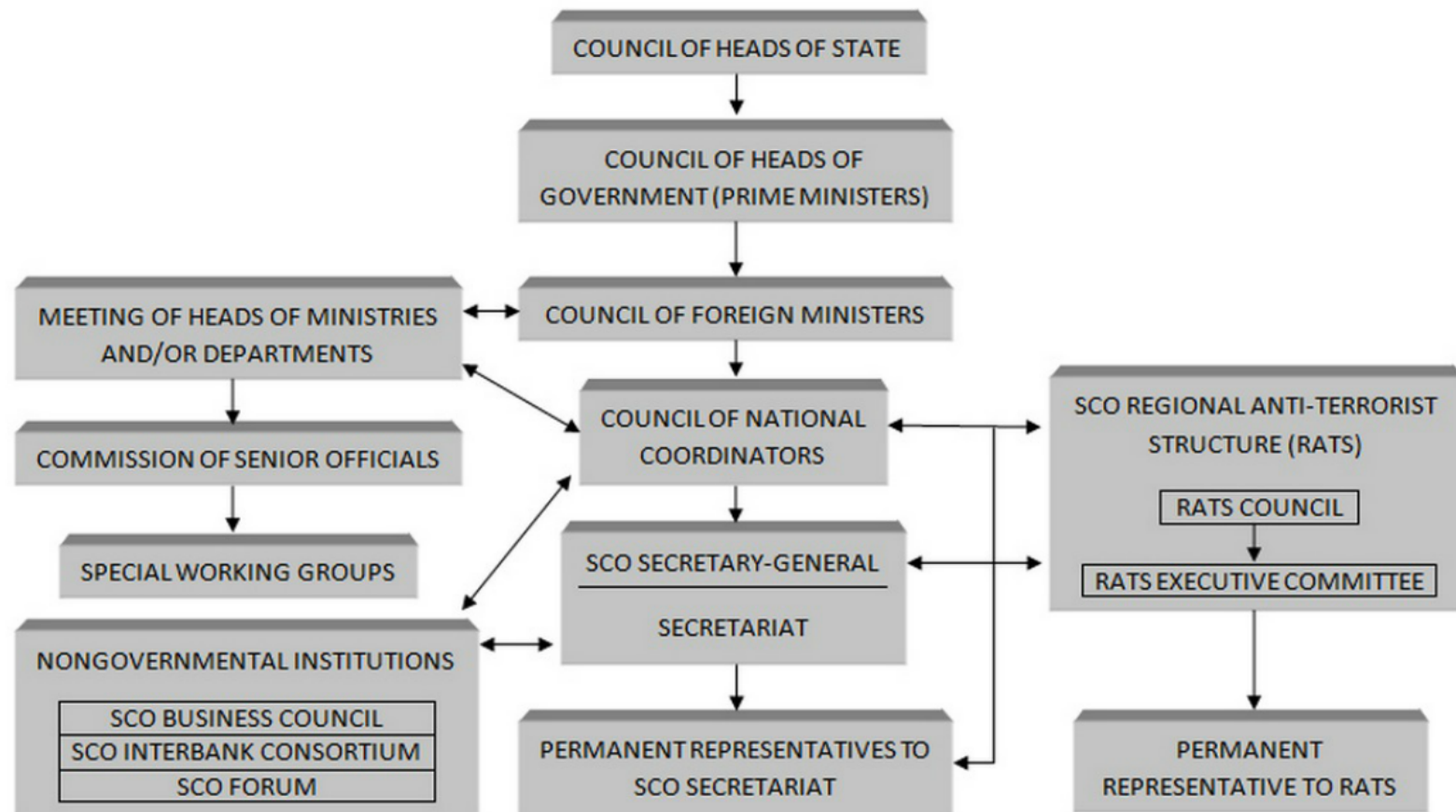
- **30 million km²**
- about three fifths of Eurasia, with a population of **1.455 billion**, about **a quarter** of the world's total.

Shanghai Cooperation Organization



Thecasesolutions.com

THE STRUCTURE OF THE SHANGHAI COOPERATION ORGANISATION



Collective Goods Issues

Missions and Values

- regional cooperation
- regional security protection
- regional membership collaboration

CG Problem

- Regional security--Central Asia
- Lacking of trust among members
- lacking of sharing resources: natural and human capital

Goals

"Proceeding from the Spirit of Shanghai the SCO pursues its internal policy based on the principles of mutual trust, mutual benefit, equal rights, consultations, respect for the diversity of cultures and equitation towards common development, its external policy is conducted in accordance with the principles of non-alignment, non-targeting anyone and openness."--SCO

Thecasesolutions.com

Thecasesolutions.com

Goals

"Proceeding from the Spirit of Shanghai the SCO pursues its internal policy based on the principles of mutual trust, mutual benefit, equal rights, consultations, respect for the diversity of cultures and aspiration towards common development, its external policy is conducted in accordance with the principles of non-alignment, non-targeting anyone and openness."--SCO

Thecasesolutions.com

Thecasesolutions.com

D-R-I Approaches

- **Official--Reciprocity:**
 - a) all members should be equaled;
 - b) balance among members;
 - c) balance of power;
 - d) benefits from the process of political, military, economic, and cultural diversity exchange. one vote for each country.
- **Unofficial--Dominance:** China and Russia as hegemonic power to lead the region, especially China, headquarter located
- **Unofficial--Identity:**
 - a) Central-Asia-only membership-oriented organization;
 - b) all members come from the region of Central Asia.
 - c) Central Asia for Central Asians

SWOT Analysis

Thecasesolutions.com

Regional Security

"making joint efforts to **maintain** and **ensure** peace, security and stability in the region, moving towards the **establishment of a new, democratic, just and rational political and economic international order.**"--SCO



Strength

Thecasesolutions.com

- Creating the network for **regional security** in Central Asia
- Providing the **protection** for all members to prevent terrorism