



HIGH RISK workers

1 Employees who have direct contact with clients

- Health care facilities
- Office environments
- Retail stores
- Gas stations
- Factories



2 Workers who travel in a vehicle most of their workday

- Contract Accountants
- Salespeople
- Consultants
- Auditors



3 Workers who secure valuable goods or handle cash

- Security Guards
- Retail Stores
- Cashiers



4 Workers in a community-based setting

- Home service/repair
- Home support staff
- Real estate agents
- Insurance agents
- Caregivers



5 Working with unstable or volatile people

- Corrections officers
- Parole officers
- Social workers
- Police officers



- Workplace Violence Policy**
- should:
- Show an employer's commitment to protecting workers from workplace violence.
 - Address violence from all possible sources (customers, clients, employers, supervisors, workers, strangers and domestic/intimate partners).
 - Outline the roles and responsibilities of the workplace partners in supporting the policy and program.
 - Be dated and signed by the highest level of management at the workplace.



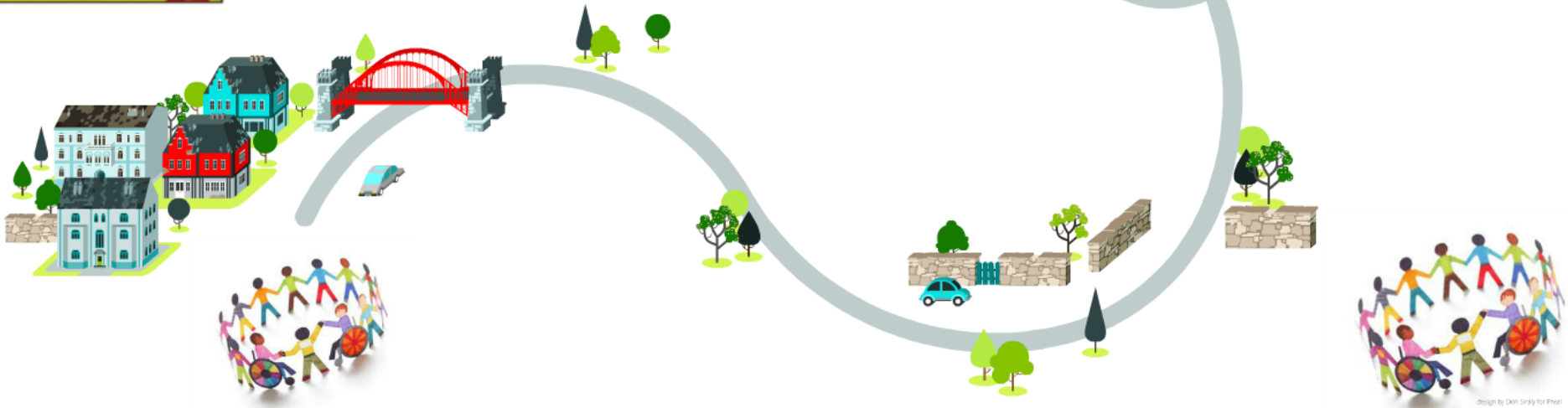
Calling the Ministry of Labour

Always contact police first in emergency situations, if threats or actual violence occurs at a workplace.

Call: Occupational Health and Safety Contact Centre toll-free at 1-877-202-0008 to file a complaint.

Lana Meier's First Day At Immaplast

TheCaseSolutions.com



design by Oen Smiley for Photo

- Verbal or written threats
- Verbal abuse
- Throwing objects
- Ridicule
- Harassment
- Threats
- Property damage
- Offensive language
- Physical attack
- Intimidation
- Bullying
- Sexual abuse

TheCaseSolutions.com

Bullying





Verbal abuse

TheCaseSolutions.com



P

TheCaseSolutions.com

Ridicule

Intimidation



TheCaseSolutions.com

Verbal or written threats

Intimidation



TheCaseSolutions.com

