

Kepak and the Future of the Irish Beef Industry

Thecasesolutions.com

By: Victoria Cummings

TheCaseSolutions.com

TheCaseSolutions.com

TheCaseSolutions.com

Chloroplast

Chloroplast is when you capture light and energy. These are an example of chloroplast because well they are plants (obviously) so that means that they use photosynthesis to capture and store light.



Cytoplasm

The cytoplasm is what holds things together so the cytoplasm would be what holds the equipment on the playground like the swings and such.



TheCaseSolutions.com

Cell Wall

The fence on the playground is like the cell wall because it protects the things inside of it.



Nucleus

The nucleus is the center of the cell, it is where the assembly of the ribosomes takes place. The swings on the playground is like the nucleus because it is the main attraction of the playground in my opinion.



TheCaseSolutions.com

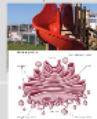
Cell Membrane

The cell membrane would be the wood chips that surround the entire playground because like the actual cell membrane it surround the cytoplasm.



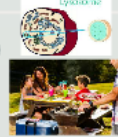
Golgi Apparatus

The slide can be used as the Golgi bodies because the both are used to transport one thing to another place.



Lysosomes

Lysosome is where the bacteria is broken down and digested so a lysosome would be when the people at the playground eat their lunch.



Ribosomes

The ribosomes manufacture the proteins so the ribosomes would be the parents because they bring their children to the park.



Mitochondria

The mitochondria is the energy cell the mitochondria can be used as a water fountain because when you get tired you can get a drink of water to refresh yourself.



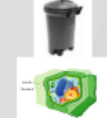
Endoplasmic Reticulum

The endoplasmic would be the thing that you talk together through with the speakers because it transports your message a message from person to person then the E.R. transfers proteins.



Vacuoles

The vacuoles on the playground would be the trash cans because it gets rid of the waste.



Centrioles

The carousel is there to help with the division of cells. They are like lines. The centrioles in this is people waiting their turn to ride the ride that they want to.



Kepak and the Future of the Irish Beef Industry

Thecasesolutions.com

By: Victoria Cummings

TheCaseSolutions.com

Nucleus
The nucleus is the center of the cell. It is where the assembly of the ribosomes takes place. The swings on the playground is like the nucleus because it is the main attraction of the playground in recreation.



TheCaseSolutions.com

Cell Wall
The fence on the playground is like the cell wall because it protects the things inside of it.

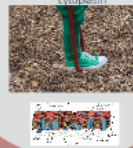


Cytoplasm
The cytoplasm is what holds things together so the cytoplasm would be what holds the equipment on the playground like the swings and such.

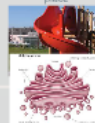


TheCaseSolutions.com

Cell Membrane
The cell membrane would be the wood chips that surround the entire playground because like the actual cell membrane it surrounds the cytoplasm.



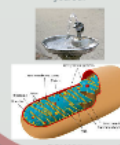
Golgi Apparatus
The slide can be used as the Golgi bodies because the both are used to transport one thing to another place.



Chloroplast
Chloroplast is when you capture light and energy. Trees are an example of chloroplast because well they are plants (obviously) so that means that they use photosynthesis to capture and store light.



Mitochondria
The mitochondria is the energy cell the mitochondria can be used as a water fountain because when you get tired you can get a drink of water to refresh yourself.



TheCaseSolutions.com

Lysosomes
Lysosome is when the bacteria is broken down and digested as a lysosome would be when the people at the playground eat their lunch.



Ribosomes
The ribosomes manufacture the proteins so the ribosomes would be the parents because they bring their children to the park.



Endoplasmic Reticulum
The endoplasmic would be the thing that you talk together through with the speakers because it transports your message a message from person to person then the E.R transfers proteins.



Vacuoles
The vacuoles on the playground would be the trash cans because it gets rid of the waste.

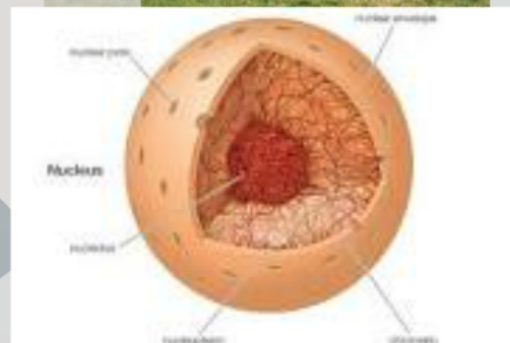
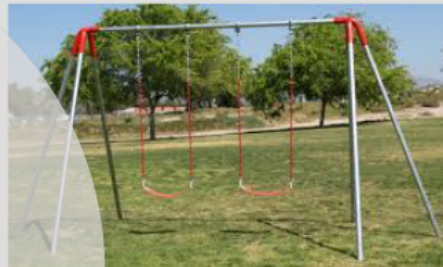


Centrioles
The centriole is there to help with the division of cells. They are like lines. The carousels in this is people waiting their turn to ride the ride that they want to ride.



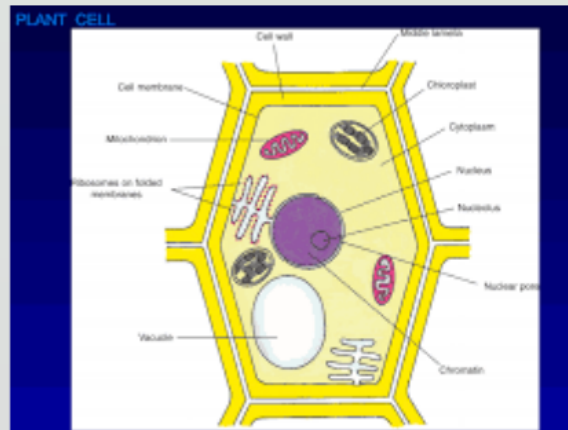
Nucleus

The nucleus is the center of the cell. It is where the assembly of the ribosomes takes place. The swings on the playground is like the nucleus because it is the main attraction of the playground in my opinion.



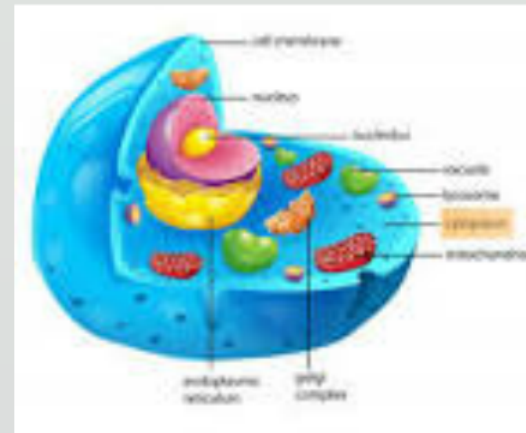
Cell Wall

The fence on the playground is like the cell wall because it protects the the things inside of it.

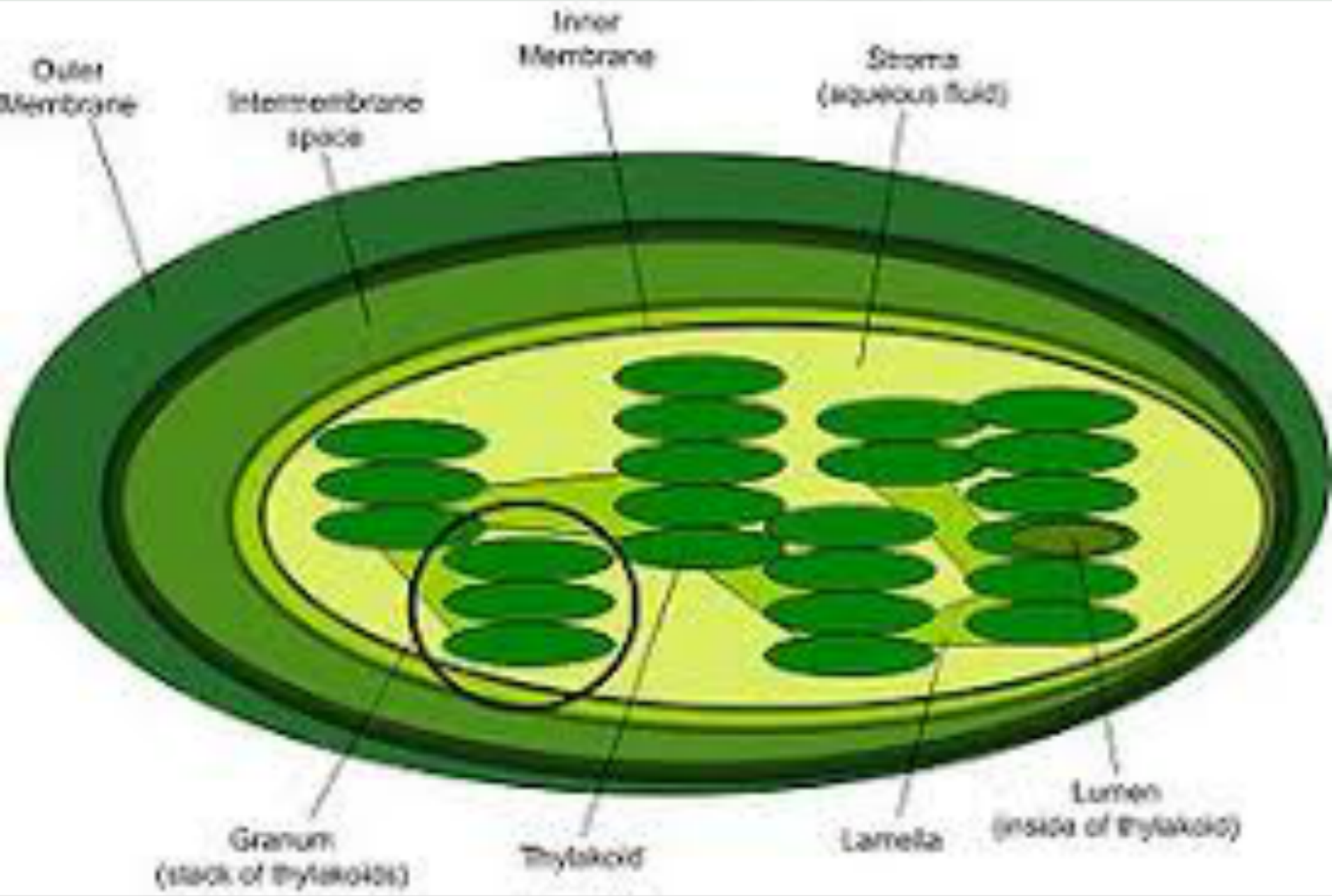


Cytoplasm

The cytoplasm is what holds things together so the cytoplasm would be what holds the equipment on the playground like the screws and such

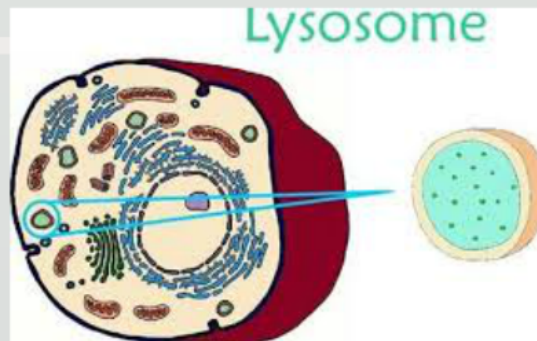


TheCaseSolutions.com



Lysosomes

lysosome is when the bacteria is broken down and digested so a lysosome would be when the people at the playground eat their lunch





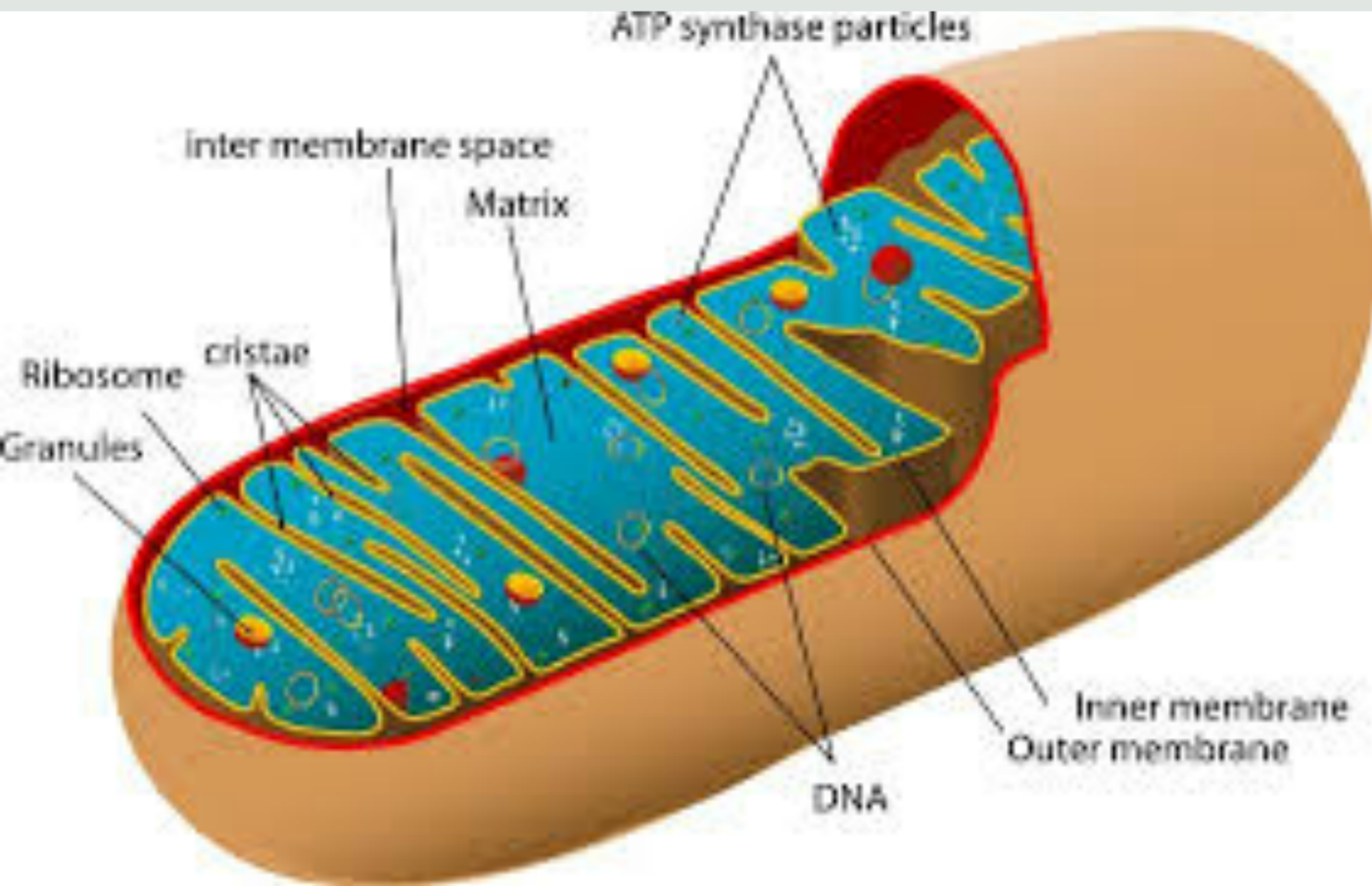


Fig. 2.1.1. Mitochondrion