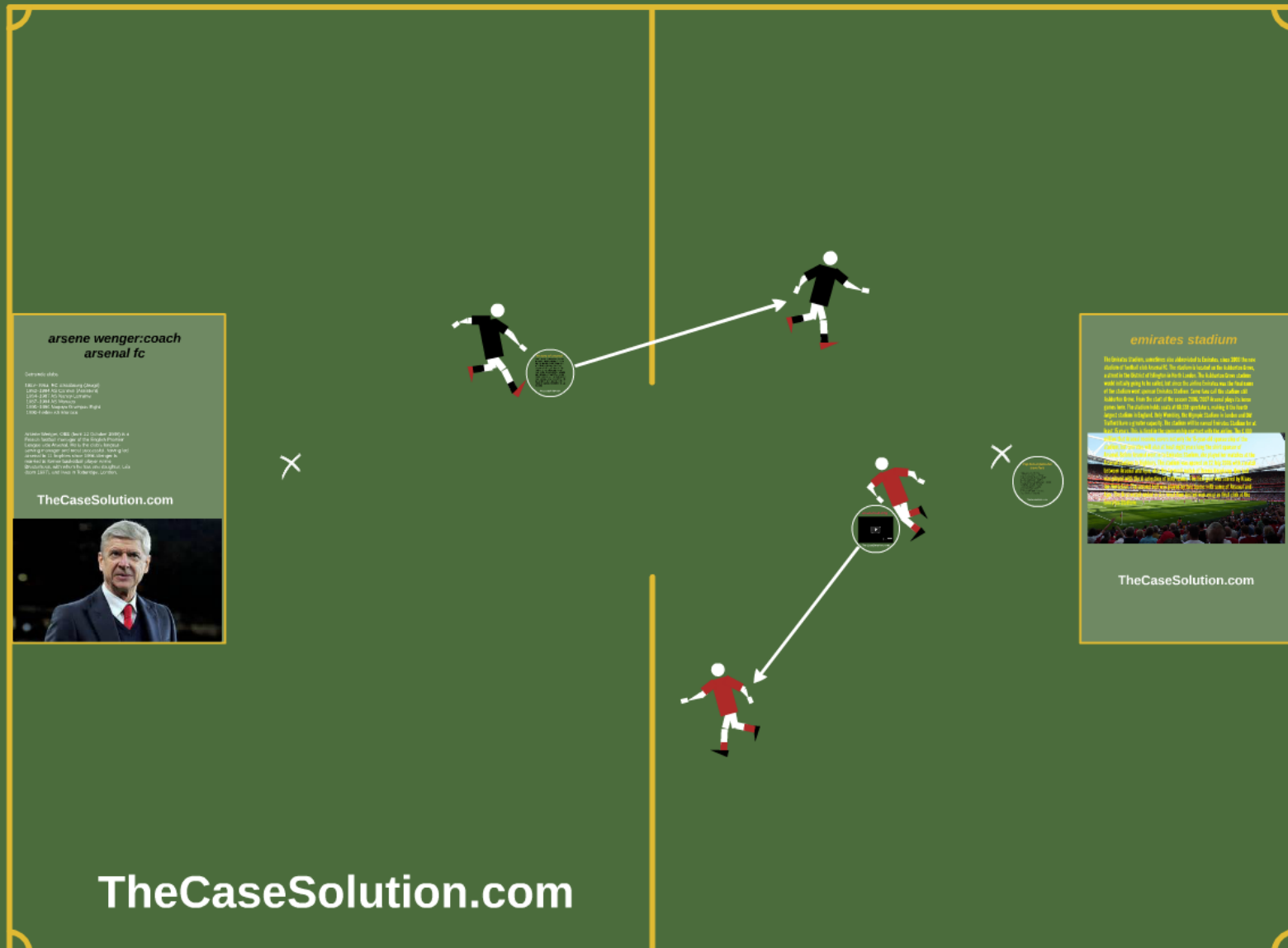


**TheCaseSolution.com**



# West Ham United Football Club's Olympic Stadium Move

TheCaseSolution.com





*Arsenal*



TheCaseSolution.com

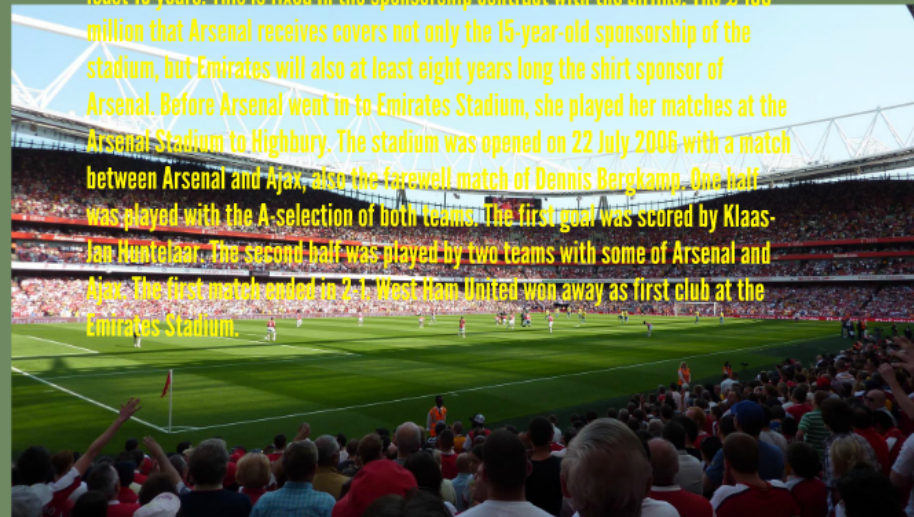
## *history of arsenal*

Arsenal Football Club, also known as Arsenal, is a football club based in London that currently plays in the Premier League, the highest English Professional League. By the end of 1886 was The Royal Arsenal in Woolwich arms factory workers, South London, Dial Square football club founded. Pretty soon, the club was renamed to Royal Arsenal. In 1893 joined Arsenal to the Professional Football League and the name was changed to ' Woolwich Arsenal '. Nicknamed ' The Gunners ' was obvious: arsenal, English for Arsenal means weapons factory or Armory. In 1913, the club moved to Highbury in North London district, after which the reference to the Southern District Woolwich from the name was removed.

**TheCaseSolution.com**

## emirates stadium

The Emirates Stadium, sometimes also abbreviated to Emirates, since 2006 the new stadium of football club Arsenal FC. The stadium is located on the Ashburton Grove, a street in the District of Islington in North London. The Ashburton Grove stadium would initially going to be called, but since the airline Emirates was the final name of the stadium went sponsor Emirates Stadium. Some fans call the stadium still Ashburton Grove. From the start of the season 2006/2007 Arsenal plays its home games here. The stadium holds seats at 60,338 spectators, making it the fourth largest stadium in England. Only Wembley, the Olympic Stadium in London and Old Trafford have a greater capacity. The stadium will be named Emirates Stadium for at least 15 years. This is fixed in the sponsorship contract with the airline. The £ 100 million that Arsenal receives covers not only the 15-year-old sponsorship of the stadium, but Emirates will also at least eight years long the shirt sponsor of Arsenal. Before Arsenal went in to Emirates Stadium, she played her matches at the Arsenal Stadium to Highbury. The stadium was opened on 22 July 2006 with a match between Arsenal and Ajax, also the farewell match of Dennis Bergkamp. One half was played with the A-selection of both teams. The first goal was scored by Klaas-Jan Huntelaar. The second half was played by two teams with some of Arsenal and Ajax. The first match ended in 2-1. West Ham United won away as first club at the Emirates Stadium.



### Top ten expensive transfers

1. Mesut Ozil - £42.5m
2. Alexis Sanchez - £31.8m
3. Jose Antonio Reyes - £17m
4. Andrei Arshavin - £15m
5. Alex Oxlade-Chamberlain - £13m
6. Sylvain Wiltord - £13m
7. Santi Cazorla - £12m
8. Samir Nasri - £12m
9. Alexander Hleb - £11.2m
10. Gervinho - £10.8m

TheCaseSolution.com

TheCaseSolution.com

## ***Top ten expensive transfers***

1. Mesut Ozil - £42.5m
2. Alexis Sanchez - £31.8m
3. Jose Antonio Reyes - £17m
4. Andrei Arshavin - £15m
5. Alex Oxlade-Chamberlain - £15m
6. Sylvain Wiltord - £13m
7. Santi Cazorla - £12m
8. Samir Nasri - £12m
9. Alexander Hleb - £11.2m
10. Gervinho - £10.8m

*arsenal red army*



You Tube

TheCaseSolution.com



## ***arsene wenger:coach arsenal fc***

### Getrainde clubs

1982–1983 RC Strasbourg (Jeugd)  
1983–1984 AS Cannes (Assistant)  
1984–1987 AS Nancy-Lorraine  
1987–1994 AS Monaco  
1995–1996 Nagoya Grampus Eight  
1996–heden AS Monaco

Arsène Wenger, OBE (born 22 October 1949) is a French football manager of the English Premier League side Arsenal. He is the club's longest-serving manager and most successful, having led Arsenal to 11 trophies since 1996. Wenger is married to former basketball player Annie Brosterhous, with whom he has one daughter, Léa (born 1997), and lives in Totteridge, London.



**TheCaseSolution.com**





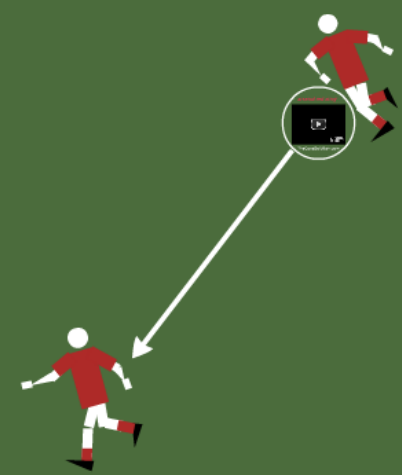
## arsene wenger:coach arsenal fc

career highlights

1983-1985 FC Moulins (France)  
1985-1988 AS Cannes (France)  
1988-1991 AS Nancy (France)  
1991-1994 AS Monaco  
1994-1998 Grimsby Town (England)  
1998-1999 AS Monaco

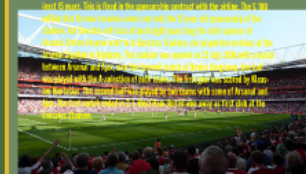
Arsene Wenger, CBE (born 23 October 1949) is a French football manager of the English Premier League club Arsenal. He is the club's longest-serving manager, after club captain, having led Arsenal to 11 trophies since 1996. Wenger is married to former footballer and Arsenal manager, and Arsenal's first female manager, Louisa (born 1967), and lives in Tottenham, London.

TheCaseSolution.com



## emirates stadium

The Emirates Stadium, sometimes also abbreviated to Emirates, since 2004 the new stadium of Arsenal club Arsenal FC. The stadium is located on the Ashburton Grove, a street in the District of London in North London. The Ashburton Grove Stadium would initially going to be called, but since the current Emirates was the first name of the stadium went to name Emirates Stadium. Since then call the stadium still Ashburton Grove. From the start of the season 2006-2007 Arsenal plays its home games here. The stadium holds more than 60,000 spectators, making it the fourth largest stadium in England, only Wembley, the Phoenix Stadium in London and Old Trafford have a greater capacity. The stadium will be named Emirates Stadium for at least 10 years. This is based on the sponsorship agreement with the club. The stadium had 60,000 seats, which was not only the largest capacity of the stadium, but also played a role in the eight years long the club sponsor of Arsenal. Emirates Stadium was in the Emirates Stadium, the played his matches at the Ashburton Grove. The stadium was opened on 22 July 2006 with a match between Arsenal and Tottenham Hotspur. The stadium was opened on 22 July 2006 with a match between Arsenal and Tottenham Hotspur. The stadium was opened on 22 July 2006 with a match between Arsenal and Tottenham Hotspur.



TheCaseSolution.com

TheCaseSolution.com