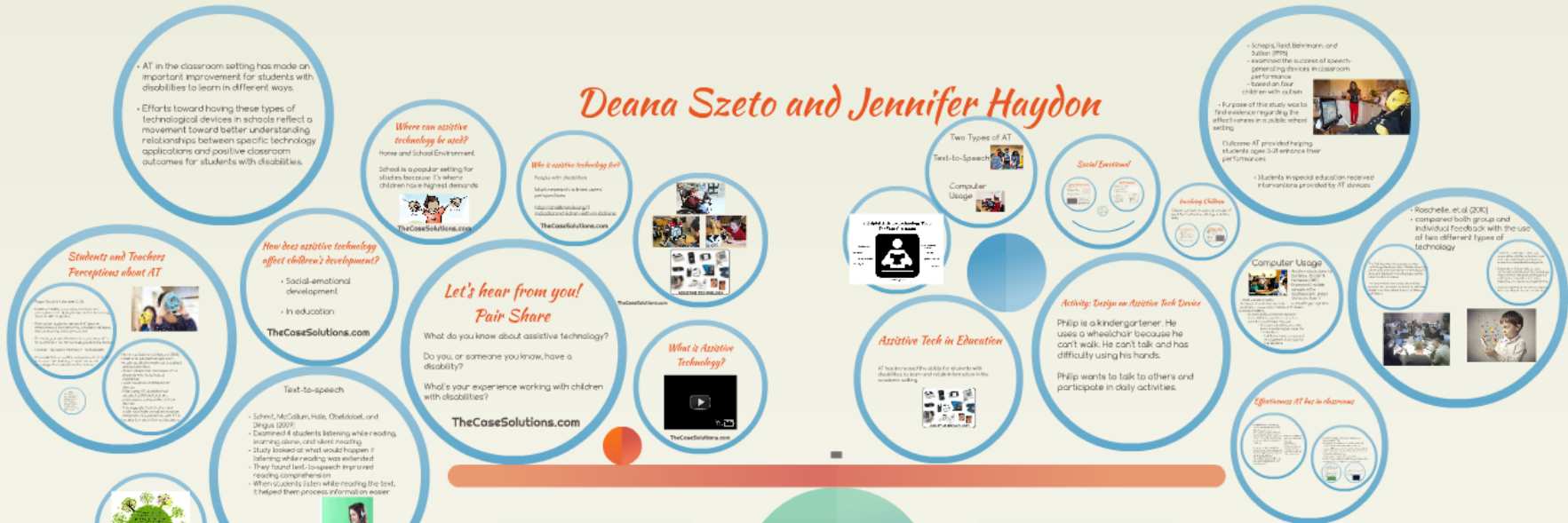


TheCaseSolutions.com

Deana Szeto and Jennifer Haydon



Organizational Culture, Values and Fit in the Workplace: Making the Right Job Choices

TheCaseSolutions.com

Deana Szeto and Jennifer Haydon

• AT in the classroom setting has made an important improvement for students with disabilities to learn in different ways.
 • Efforts toward having these types of technological devices in schools reflect a movement toward better understanding relationships between specific technology applications and positive classroom outcomes for students with disabilities.

Where can assistive technology be used?
 Home and School Environment
 School is a popular setting for students because it's where children have highest demands

Who is assistive technology for?
 People with disabilities
 Multisensory & low cost
 portable
 Microsoft Learning
 Education.com
 TheCaseSolutions.com



Two Types of AT
 Text-to-Speech
 Computer Usage

Social Emotional

Reading Children

• Schep, Lisa Benmann, and Susan King
 • examined the success of speech-generating devices in classroom performance based on how children with autism
 • Purpose of this study was to find evidence regarding the effectiveness in a public school setting
 • Custom AT provided helpful students ages 3-5 improve their performances
 • Students in special education received interventions provided by AT devices

Computer Usage

• Roschelle, et al (2001)
 • compared both group and individual feedback with the use of two different types of technology

Students and Teachers Perceptions about AT

• Social-emotional development
 • In education
 TheCaseSolutions.com

How does assistive technology affect children's development?

• Social-emotional development
 • In education
 TheCaseSolutions.com

Let's hear from you! Pair Share

What do you know about assistive technology?
 Do you, or someone you know, have a disability?
 What's your experience working with children with disabilities?
 TheCaseSolutions.com

What is Assistive Technology?



Assistive Tech in Education

AT (assistive technology) is used with disabilities to learn and relate to the world better.

Activity: Design an Assistive Tech Device

Philip is a kindergartener. He uses a wheelchair because he can't walk. He can't talk and has difficulty using his hands.
 Philip wants to talk to others and participate in daily activities.

Electronics AT use in classroom

• Schep, Lisa Benmann, and Susan King
 • examined the success of speech-generating devices in classroom performance based on how children with autism
 • Purpose of this study was to find evidence regarding the effectiveness in a public school setting
 • Custom AT provided helpful students ages 3-5 improve their performances
 • Students in special education received interventions provided by AT devices

References

Alley, M., & Gagnier, J. (2012). The use of AT in the classroom. *Journal of Assistive Technology*, 26(1), 1-10.
 Baker, J., & Gagnier, J. (2012). The use of AT in the classroom. *Journal of Assistive Technology*, 26(1), 1-10.
 Baker, J., & Gagnier, J. (2012). The use of AT in the classroom. *Journal of Assistive Technology*, 26(1), 1-10.
 Baker, J., & Gagnier, J. (2012). The use of AT in the classroom. *Journal of Assistive Technology*, 26(1), 1-10.
 Baker, J., & Gagnier, J. (2012). The use of AT in the classroom. *Journal of Assistive Technology*, 26(1), 1-10.
 Baker, J., & Gagnier, J. (2012). The use of AT in the classroom. *Journal of Assistive Technology*, 26(1), 1-10.

References

Baker, J., & Gagnier, J. (2012). The use of AT in the classroom. *Journal of Assistive Technology*, 26(1), 1-10.
 Baker, J., & Gagnier, J. (2012). The use of AT in the classroom. *Journal of Assistive Technology*, 26(1), 1-10.
 Baker, J., & Gagnier, J. (2012). The use of AT in the classroom. *Journal of Assistive Technology*, 26(1), 1-10.
 Baker, J., & Gagnier, J. (2012). The use of AT in the classroom. *Journal of Assistive Technology*, 26(1), 1-10.
 Baker, J., & Gagnier, J. (2012). The use of AT in the classroom. *Journal of Assistive Technology*, 26(1), 1-10.
 Baker, J., & Gagnier, J. (2012). The use of AT in the classroom. *Journal of Assistive Technology*, 26(1), 1-10.

Organizational Culture, Values and Fit in the Workplace: Making the Right Job Choices

ology
ment?

om

el, and

hile reading,

g
ben if
nded
oved



Let's hear from you!

Pair Share

TheCaseSolutions.com

What do you know about assistive technology?

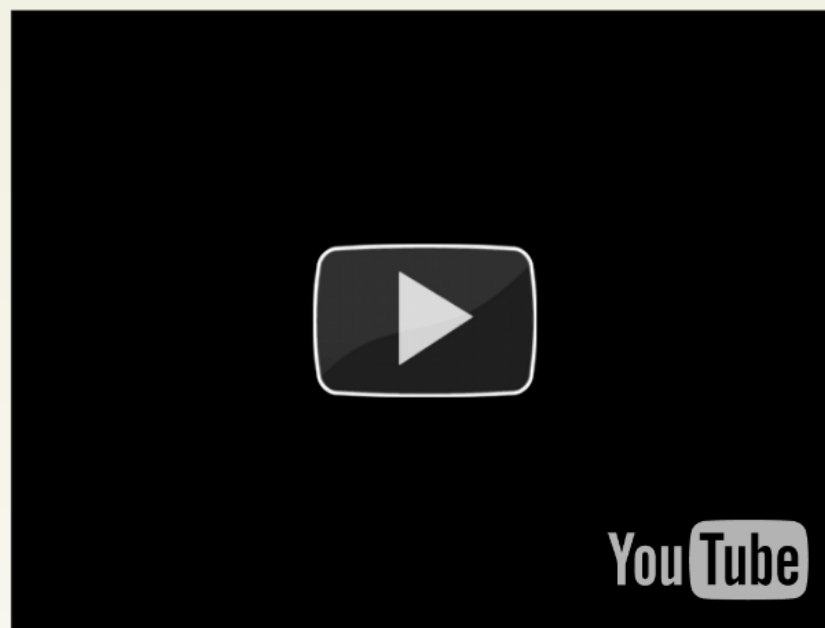
Do you, or someone you know, have a disability?

What's your experience working with children with disabilities?

TheCaseSolutions.com



What is Assistive Technology?



TheCaseSolutions.com

ons



ASSISTIVE TECHNOLOGY

Who is assistive technology for?

People with disabilities

Much research is from users'
perspectives

[http://childtrends.org/?
indicators=children-with-limitations](http://childtrends.org/?indicators=children-with-limitations)

TheCaseSolutions.com

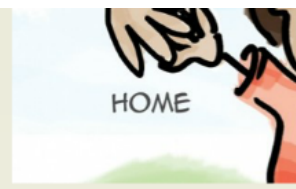
Where can assistive technology be used?

Home and School Environment

School is a popular setting for studies because it's where children have highest demands



TheCaseSolutions.com



TheCaseS

How does assistive technology affect children's development?

- Social-emotional development
- In education

TheCaseSolutions.com

W
D
d

TheCaseSolutions.com

Deana Szeto and Jennifer Haydon

• AT in the classroom setting has made an important improvement for students with disabilities to learn in different ways.
 • Efforts toward having these types of technological devices in schools reflect a movement toward better understanding relationships between specific technology applications and positive classroom outcomes for students with disabilities.

Where can assistive technology be used?
 Home and School Environment
 School is a popular setting for students because it's where children have highest demands

Who is assistive technology for?
 People with disabilities
 Multisensory & low cost & portable
 Microsoft Learning 3
 Education.com 2013-2014



Two Types of AT
 Text-to-Speech
 Computer Usage

Social Emotional

Reading Children

• Schep, Lisa Benmann, and Susan Pitt
 • examined the success of speech-generating devices in classroom performance based on how children with autism
 • Purpose of this study was to find evidence regarding the effectiveness in a public school setting
 • Custom AT provided helpful students ages 3-5 improve their performances
 • Students in special education received interventions provided by AT devices

Computer Usage

• Roschelle, et al (2001)
 • compared both group and individual feedback with the use of two different types of technology

Students and Teachers Perceptions about AT

How does assistive technology affect children's development?
 • Social-emotional development
 • In education

Let's hear from you! Pair Share

What do you know about assistive technology?
 Do you, or someone you know, have a disability?
 What's your experience working with children with disabilities?

What is Assistive Technology?

Assistive Tech in Education
 AT (includes assistive devices) is used with disabilities to learn and relate to others in the classroom setting

Activity: Design an Assistive Tech Device
 Philip is a kindergartener. He uses a wheelchair because he can't walk. He can't talk and has difficulty using his hands.
 Philip wants to talk to others and participate in daily activities.

Electronics AT use in classroom



Text-to-speech
 • Schenk, McCallum, Hain, Chabalais, and Singua (2007)
 • Examined 4 students' beliefs while reading, learning plans, and silent reading
 • Study looked at what would happen if listening while reading was extended
 • They found text-to-speech improved reading comprehension
 • When students listen while reading the text, it helped them process information easier

References

Alley, M., Suggs, J., & C. (2013). The role of AT in the development of reading technology. *Journal of Assistive Technology*, 27(1), 1-10.
 Cohen, J., Ochs, E., & P. (2008). Reading an assistive device for people with physical disabilities. *Journal of Assistive Technology*, 22(1), 1-10.
 Ferguson, J. (2013). Assistive technology in the classroom. *Journal of Assistive Technology*, 27(1), 1-10.
 Hain, J., & C. (2007). Children's perceptions of their use of assistive technology. *Journal of Assistive Technology*, 21(1), 1-10.
 P. (2013). Assistive technology in the classroom. *Journal of Assistive Technology*, 27(1), 1-10.
 Suggs, J., & C. (2013). Assistive technology in the classroom. *Journal of Assistive Technology*, 27(1), 1-10.

References

Benjamin, L., & C. (2013). Assistive technology in the classroom. *Journal of Assistive Technology*, 27(1), 1-10.
 Cohen, J., Ochs, E., & P. (2008). Reading an assistive device for people with physical disabilities. *Journal of Assistive Technology*, 22(1), 1-10.
 Ferguson, J. (2013). Assistive technology in the classroom. *Journal of Assistive Technology*, 27(1), 1-10.
 Hain, J., & C. (2007). Children's perceptions of their use of assistive technology. *Journal of Assistive Technology*, 21(1), 1-10.
 P. (2013). Assistive technology in the classroom. *Journal of Assistive Technology*, 27(1), 1-10.
 Suggs, J., & C. (2013). Assistive technology in the classroom. *Journal of Assistive Technology*, 27(1), 1-10.

Organizational Culture, Values and Fit in the Workplace: Making the Right Job Choices