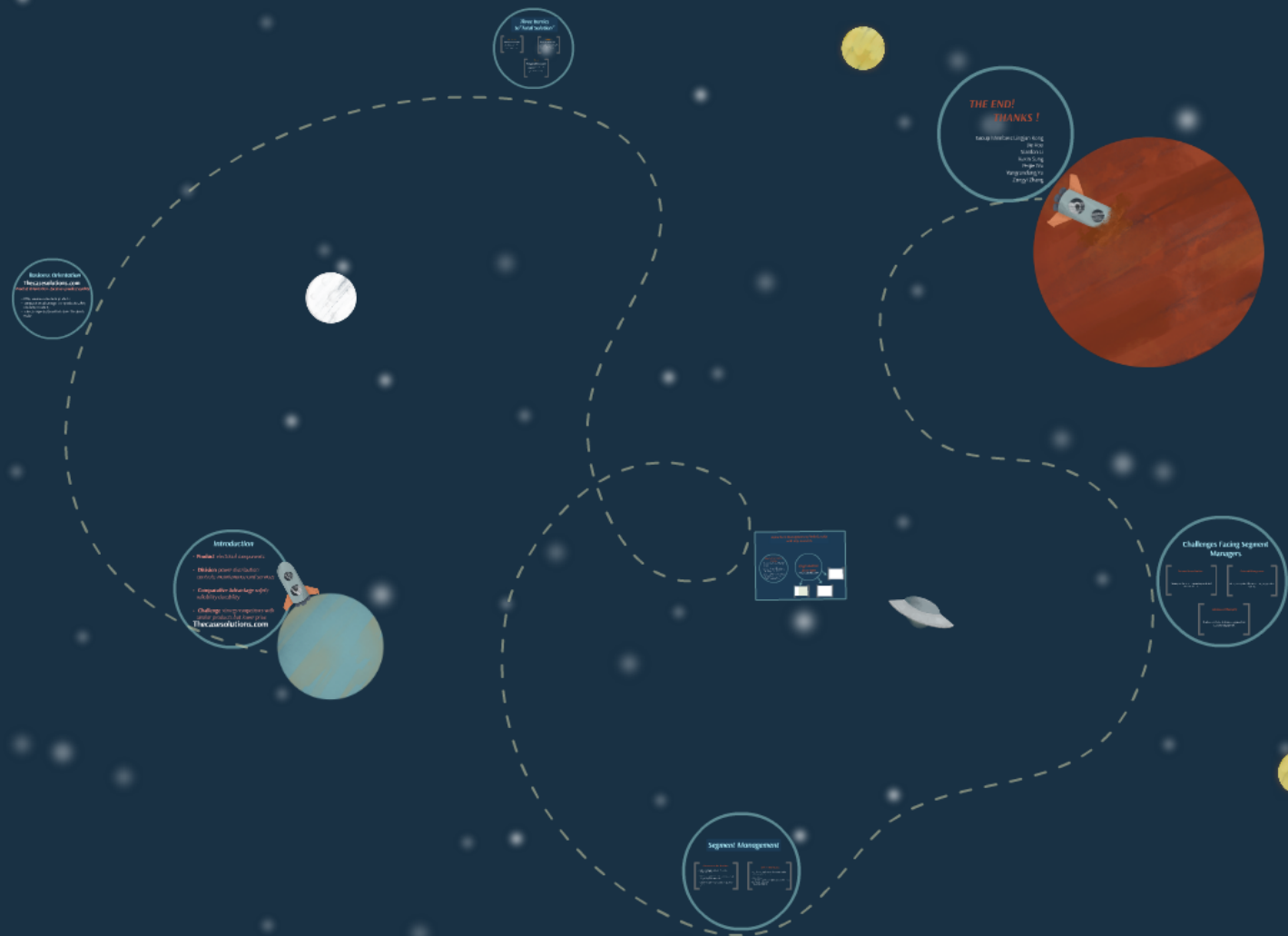


# MedCath Corporation (C)

Thecasesolutions.com



# MedCath Corporation (C)

Thecasesolutions.com

# Introduction

- **Product** *electrical components*
- **Division** *power distribution; controls; maintenance and services*
- **Comparative Advantage** *safety reliability durability*
- **Challenge** *strong competitors with similar products but lower price*

**Thecasesolutions.com**



# ***Business Orientation***

**Thecasesolutions.com**

***Product Orientation--focus on product quality***

- 80% revenue come from products
- comparative advantage is on products safety reliability durability
- sales is expected to sell whatever the plants make

## *Product-orientation*

# Thecasesolutions.com

- Salespeople were expected to sell all of products and services
- Sales for each division is centralized

## *Segmentation*

# Thecasesolutions.com

- Sales was sub-organized into three geographic regions (instead, certain industries) while marketing directors reported to the head of sales at the country level
- Maintenance was only handled by M&S division

*Reward*

# Thecasesolutions.com

- In reality, salespeople only sold to attain the maximum bonus
- So-called “solution” hurt revenue per product

## *Internal Dynamics- Beliefs*

- Do not see “understanding what customers want” and “providing solutions to them” as something important.
- Salespeople do not have intention to develop a relationship with customers. They were only on a first-name basis with their customers.
- Their salespeople were trained never to recommend a competitor's product even when their company did not make the product with the exact specifications the customers needed.

**Thecasesolutions.com**





# *Organisation Structure*

Thecasesolutions.com