

Tuesdays with Morrie



by: Mitch Albom

TheCaseSolutions.com



Tuesdays with Morrie



by: Mitch Albom

TheCaseSolutions.com

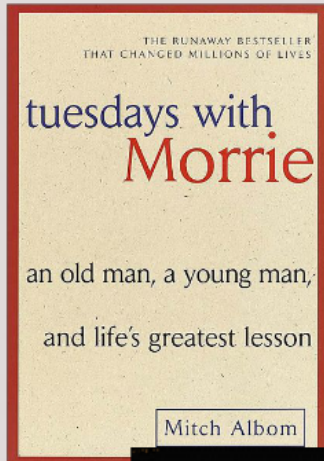


Oprah Persuasion



You Tube

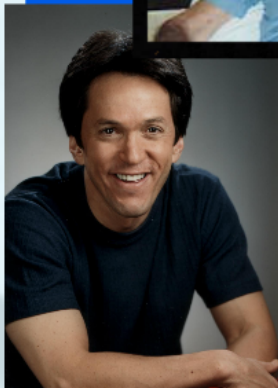
Mitch Recognizes Morrie



- The first pivotal scene in the book is when Mitch recognizes his old professor from Brandeis University on television
- Page 23 quote
- Realizes how ill his professor really is and decides he needs to visit him



- Morrie was diagnosed in August of 1994
- ALS, also known as, Lou Gehrig's Disease
- Illness of the neurological system



'Do I wither up and disappear, or do I make the best of my time left?' -Morrie Schwartz, (pg. 10)



- Quote
- "I've tested other not."
- Wife C
- Janine
- Sings f
- Quote o





ABC-TV's Nightline, March 1995

Host: Ted Koppel

stop around 1:34

Tuesdays with Morrie



by: Mitch Albom

TheCaseSolutions.com



Scattered around the book are several study cards and a movie trailer. The cards include:

- Who's the Protagonist?** - A card with a small image and text.
- Characteristics of a Message Based on Truth** - A card with text and a small image.
- Mitch Recognizes Morrie** - A card with text and a small image.
- Characteristics of the Message #1: Why it is so Powerful** - A card with text and a small image.
- Movie Trailer** - A small video player showing a person's face.
- Tuesday #10: Marriage** - A card with a list of bullet points and a small image.

Scattered around these cards are various lowercase letters (a, b, c, d, e, f, g, h, i, j, k, l, m, n, o, p, q, r, s, t, u, v, w, x, y, z) and a yellow star icon.