

THE WATER CHALLENGE IN KENYA: A CHALLENGE OR AN OPPORTUNITY?

Thecasesolutions.com

Kenya's Geographic Facts

- Total area: 580,367 sq km
- Land area: 569,140 sq km
- Water area: 11,227 sq km
- Climate: tropical along coast and dry in interior
- Terrain: low plains rise to central highlands bisected by Great Rift Valley; fertile plateau in the west
- Lakes: Lake Victoria and Lake Turkana

Thecasesolutions.com

www.thecasesolutions.com

www.thecasesolutions.com

Kenya's Basic Facts

- Relative location: Kenya is located in East Africa and borders countries such as Somalia and Ethiopia.
- Is the 49th largest country in the world
- Has glaciers on Mount Kenya
- Is governed by a republic government
- A common place for slave trafficking

Thecasesolutions.com

Mount Kenya

Situation of the Kenyan water crisis

- 40 million people living in Kenya
- About 17 million do not have access to clean water
- Mainly caused by years of recurrent droughts
- Poor management of water supply
- Contamination of available water
- Increase in water demand from relatively high population growth
- Most of the urban poor Kenyans only have access to polluted water

Thecasesolutions.com

Problems specific to Kenya

- Water pollution from urban and industrial wastes
- Degradation of water quality from increased use of pesticides and fertilizers
- Recurring droughts
- Flooding during rainy seasons
- Water hyacinth infestation in Lake Victoria

Thecasesolutions.com

Recommendations for addressing Kenya's water crisis

Thecasesolutions.com

- Construct water harvesting system on houses
- Decrease deforestation to increase the precipitation (evapotranspiration)
- Decrease the population in Kenya so more water is available for the remaining population
- Manage farms so they do not drain the river of its water

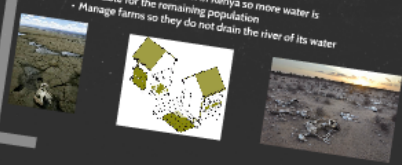
Recommendations for addressing Kenya's water crisis

Thecasesolutions.com

- Efficiently use the water from underground and Lake Victoria
- Use salt water filters to filter the salt water for more drinkable water
- Re-use water (ex. use left over bathing water to water crops)

Thecasesolutions.com

Population of Kenya: 44,038,000



Water hyacinth is considered one of the most invasive water weeds in the world. It grows rapidly, covering large areas of water bodies, and blocking the water supply. It also causes oxygen depletion and water pollution.

THE WATER CHALLENGE IN KENYA: A CHALLENGE OR AN OPPORTUNITY?

Thecasesolutions.com

Kenya's Geographic Facts

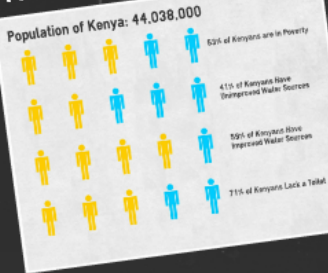
- Total area: 580,367 sq km
- Land area: 569,140 sq km
- Water area: 11,227 sq km
- Climate: tropical along coast and dry in interior
- Terrain: low plains rise to central highlands bisected by Great Rift Valley; fertile plateau in the west
- Lakes: Lake Victoria and Lake Turkana

Thecasesolutions.com

www.thecasesolutions.com

www.thecasesolutions.com

Thecasesolutions.com



Kenya's Basic Facts



- Relative location: Kenya is located in East Africa and borders countries such as Somalia and Ethiopia.
- Is the 49th largest country in the world
- Has glaciers on Mount Kenya
- Is governed by a republic government
- A common place for slave trafficking



Mount Kenya

Thecasesolutions.com

Recommendations for addressing Kenya's water crisis

Thecasesolutions.com

- Construct water harvesting system on houses
- Decrease deforestation to increase the precipitation (evapotranspiration)
- Decrease the population in Kenya so more water is available for the remaining population
- Manage farms so they do not drain the river of its water



Situation of the Kenyan water crisis

- 40 million people living in Kenya
- About 17 million do not have access to clean water
- Mainly caused by years of recurrent droughts
- Poor management of water supply
- Contamination of available water
- Increase in water demand from relatively high population growth
- Most of the urban poor Kenyans only have access to polluted water



Thecasesolutions.com

Problems specific to Kenya

- Water pollution from urban and industrial wastes
- Degradation of water quality from increased use of pesticides and fertilizers
- Recurring droughts
- Flooding during rainy seasons
- Water hyacinth infestation in Lake Victoria

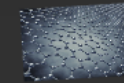


Water hyacinth is considered one of the world's worst water weeds. It blocks lakes, rivers, streams and degrades aquatic ecosystems, and interferes with water treatment, irrigation, and water supply.

Recommendations for addressing Kenya's water crisis

Thecasesolutions.com

- Efficiently use the water from underground and Lake Victoria
- Use salt water filters to filter the salt water for more drinkable water
- Re-use water (ex. use left over bathing water to water crops)



Kenya's Geographic Facts

- Total area: 580,367 sq km
- Land area: 569,140 sq km
- Water area: 11,227 sq km
- Climate: tropical along coast and dry in interior
- Terrain: low plains rise to central highlands bisected by Great Rift Valley; fertile plateau in the west
- Lakes: Lake Victoria and Lake Turkana

Thecasesolutions.com



Kenya's Basic Facts

- Relative location: Kenya is located in East Africa and borders countries such as Somalia and Ethiopia.
- Is the 49th largest country in the world
- Has glaciers on Mount Kenya
- Is governed by a republic government
- A common place for slave trafficking



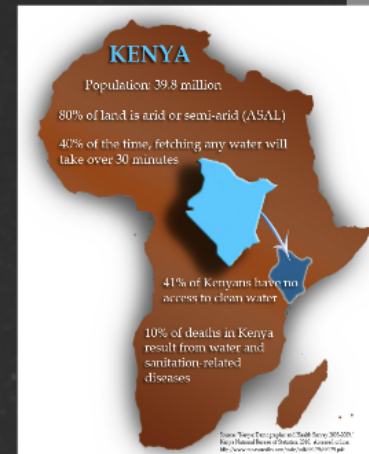
Thecasesolutions.com

Mount Kenya



Situation of the Kenyan water crisis

- 40 million people living in Kenya
- About 17 million do not have access to clean water
- Mainly caused by years of recurrent droughts
- Poor management of water supply
- Contamination of available water
- Increase in water demand from relatively high population growth
- Most of the urban poor Kenyans only have access to polluted water



Thecasesolutions.com

Thecasesolutions.com

Population of Kenya: 44,038,000



Problems specific to Kenya

Thecasesolutions.com

- Water pollution from urban and industrial wastes
- Degradation of water quality from increased use of pesticides and fertilizers
- Recurring droughts
- Flooding during rainy seasons
- Water hyacinth infestation in Lake Victoria



<http://news.nationalgeographic.com/news/2010/03/100322/swimming-in-sewage-for-world-water-day/>
Children washing in the foul smelling and polluted water in Nairobi, Kenya



http://en.wikipedia.org/wiki/Water_hyacinth_in_Lake_Victoria



<http://www.specialbagforyou.com/bag/index.php?route=product/category&path=18>

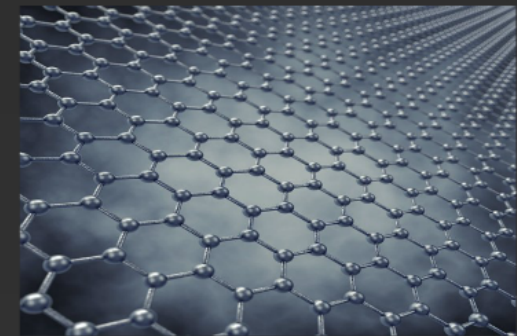
Water hyacinth is considered one of the world's worst water weeds. It invades lakes, ponds, canals, rivers, spreads and degrades aquatic ecosystems, and interferes with water treatment, irrigation, and water supply.

Recommendations for addressing Kenya's water crisis

Thecasesolutions.com



- Efficiently use the water from underground and Lake Victoria
- Use salt water filters to filter the salt water for more drinkable water
- Re-use water (ex. use left over bathing water to water crops)



Recommendations for addressing Kenya's water crisis

Thecasesolutions.com

- Construct water harvesting system on houses
- Decrease deforestation to increase the precipitation (evapotranspiration)
- Decrease the population in Kenya so more water is available for the remaining population
- Manage farms so they do not drain the river of its water

