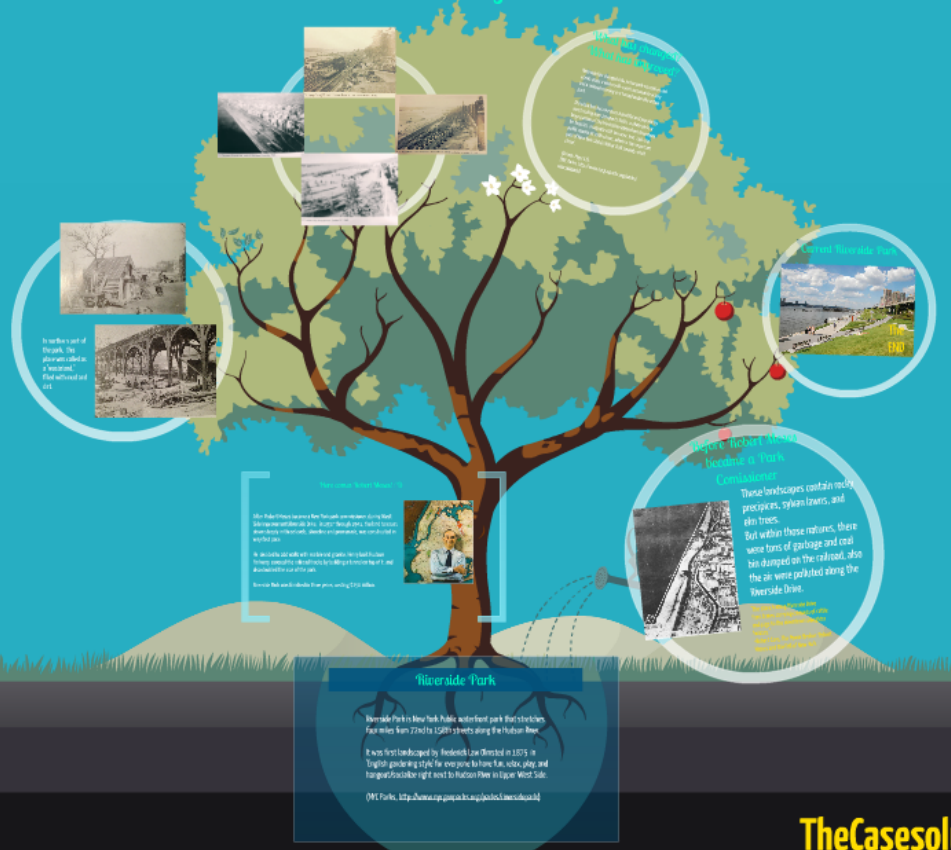


# Robert Moses

## Aiko Taniguchi



**How did Moses think about parks?**

Robert Moses believed that parks were essential for the health and well-being of the city. He argued that parks provided a place for recreation, exercise, and social interaction. He also believed that parks could help to improve the quality of the air and reduce the amount of noise in the city.

**How did Riverside Park become Riverside Park?**

Riverside Park was originally a private estate owned by the Rockefeller family. In 1906, the city of New York purchased the estate and converted it into a public park. The park was designed by Frederick Law Olmsted and his son John Charles Olmsted.

**Robert Moses and the Board of Parks Commissioners**

These buildings contain rocks, pebbles, shells, twigs, leaves, and other items. But within these nature, there were tons of garbage and coal that were dumped along the Riverside Drive.

**How did Robert Moses think about parks?**

Mrs. Margaret Lawrence from the park commission during that time was very interested in the park. She was very interested in the park and she was very interested in the park. She was very interested in the park and she was very interested in the park.

**To make a part of the park, the place was called a "natural" park.**

The park was called a "natural" park because it was a natural area. It was a natural area and it was a natural area. It was a natural area and it was a natural area.

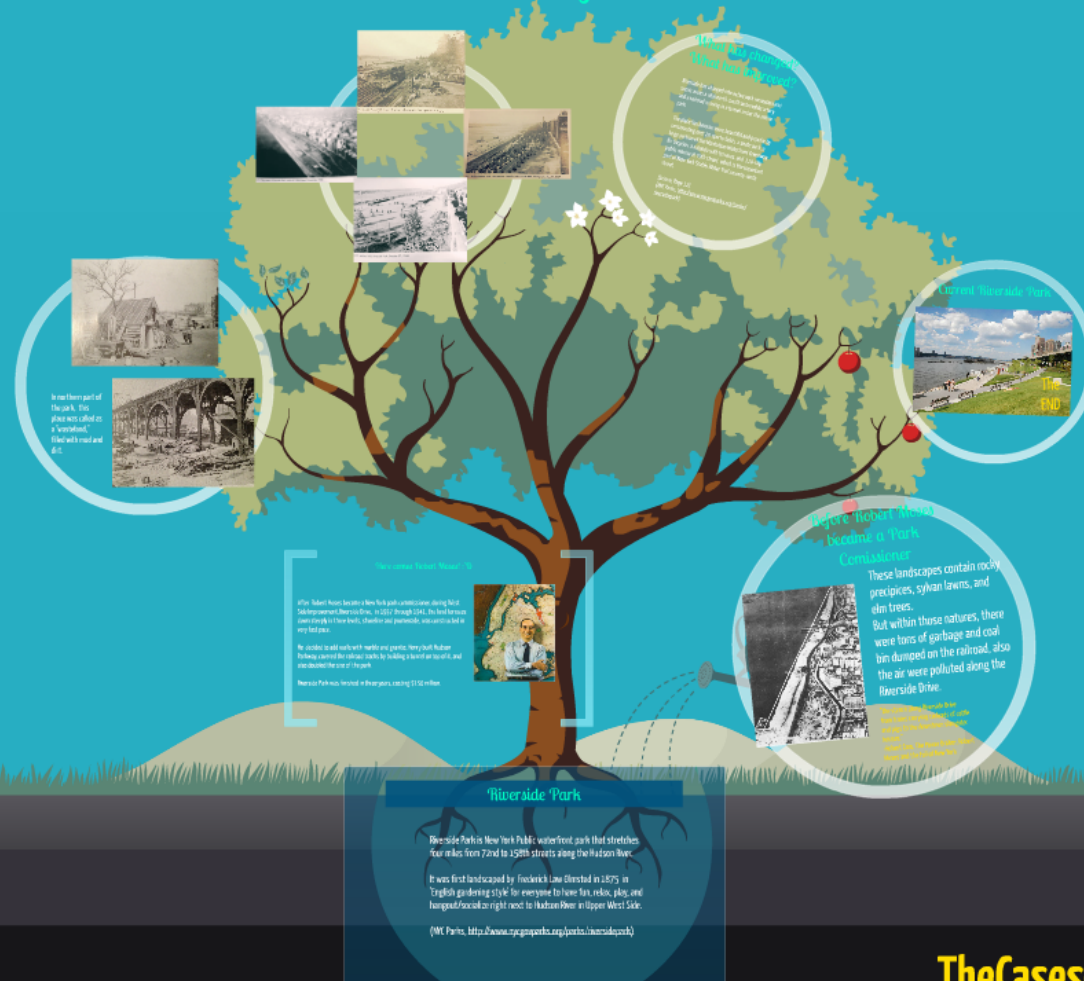
**Riverside Park**

Riverside Park is New York's Public outdoor park that stretches four miles from 72nd to 138th streets along the Hudson River. It was first landscaped by Frederick Law Olmsted in 1875 in English garden style for everyone to have fun, relax, play and hang out together right next to Hudson River on Upper West Side.

(NY Parks, <http://www.nyc.gov/html/dpaw/html/about/index.shtml>)

# Robert Moses

Aiko Taniguchi





## Riverside Park

Riverside Park is New York Public waterfront park that stretches four miles from 72nd to 158th streets along the Hudson River.

It was first landscaped by Frederick Law Olmsted in 1875 in 'English gardening style' for everyone to have fun, relax, play, and hangout/socialize right next to Hudson River in Upper West Side.

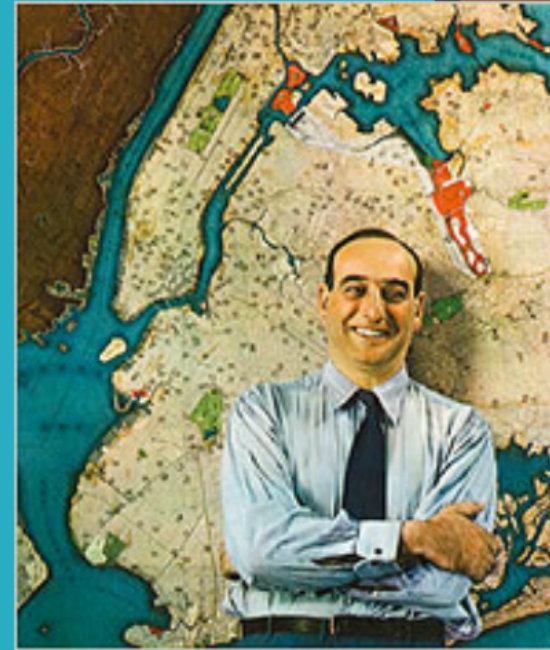
(NYC Parks, <http://www.nycgovparks.org/parks/riversidepark>)

## Here comes Robert Moses! :D

After Robert Moses became a New York park commissioner, during West Side Improvement, Riverside Drive, in 1937 through 1941, the land terraces down steeply in three levels, shoreline and promenade, was constructed in very fast pace.

He decided to add walls with marble and granite, Henry built Hudson Parkway, covered the railroad tracks by building a tunnel on top of it, and also doubled the size of the park.

Riverside Park was finished in three years, costing \$150 million.



## Before Robert Moses became a Park Comissioner



These landscapes contain rocky precipices, sylvan lawns, and elm trees.

But within those natures, there were tons of garbage and coal bin dumped on the railroad, also the air were polluted along the Riverside Drive.

"the stench along Riverside Drive from trains carrying carloads of cattle and pigs to the downtown slaughter houses."

-Robert Caro, *The Power Broker: Robert Moses and the Fall of New York*