

ICE in Sports

TheCasesolutions.com



Introduction

Our sport is ice hockey. Ice hockey is a sport played on an ice rink or on a frozen body of water in the winter. Ice hockey originated in Montreal, Canada. The sport developed from field hockey which was first played around 4000 years ago in Egypt. The Stanley Cup is the ultimate seasonal win for an ice hockey team.



Development

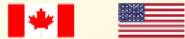
- Field hockey was played with balls and curved sticks which changed into flat sticks and rubber pads when playing on hockey.
- Due to the snow in Canada, instead of playing field hockey, ice hockey was created to be played on the water on sheets of ice.
- Technology changed the game of ice hockey by developing ice rinks that gave the opportunity of playing ice hockey inside.
- Ice hockey originated in Montreal and spread to spread to 130 other United States about the same time it became very popular in Canada.

Fan Base

- Since ice hockey is a sport that is played mostly in 30 northern US and Canada most of the fan base is located in those areas.
- Since ice hockey originated in Canada and because it is a winter sport of this nature a lot of fans come from Canada to watch play and have long trips just to see their teams.



Diffusion



- Field hockey relocated to Canada (relocation diffusion)
- Field hockey changed to ice hockey
- Ice hockey spread contagiously throughout North America (contagious diffusion)
- Ice hockey also spread throughout the world and is now played in many countries

Sports Culture

Ice hockey is considered a winter sport. The first winter season in the US hockey was in Canada in the 18th century. It spread to America in 1825. Ice hockey in the 19th century. The game from Montreal, Canada spread to the rest of the world. The game from Montreal, Canada spread to the rest of the world. The game from Montreal, Canada spread to the rest of the world.



Globalization

Ice hockey is played in over 30 countries around the world. There are over 100 million fans of ice hockey. The game is played in over 30 countries around the world. There are over 100 million fans of ice hockey. The game is played in over 30 countries around the world.

Rules and Game Information Card

Ice hockey is a team sport played on an ice rink. The game is played in over 30 countries around the world. There are over 100 million fans of ice hockey. The game is played in over 30 countries around the world.



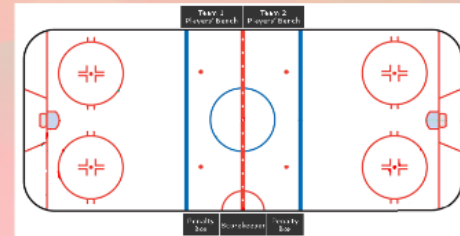
Fun Facts & Quotes

- A hockey is a winter sport that is played on ice.
- It is one of the most popular winter sports.



Changes Throughout the Years

- Ice hockey has spread to many places in the world.
- Some hockey has spread to many places in the world.
- Some hockey has spread to many places in the world.



ICE in Sports

TheCasesolutions.com



Introduction

Our sport is ice hockey. Ice hockey is a sport played in an ice rink on an ice arena body of water in the winter. Ice hockey originated in Montreal, Canada. The sport developed from field hockey which was first played around 4000 years ago in Egypt. The Stanley Cup is the ultimate seasonal trophy for an ice hockey team.



Development

- Field hockey was played with balls and curved sticks which changed into flat sticks and rubber pucks when playing ice hockey.
- Due to the snow in Canada, instead of playing field hockey, ice hockey was wanted to be played in the winter on sheets of ice.
- Technology changed the game of ice hockey by developing ice rinks that gave the opportunity of playing ice hockey inside.
- Ice hockey originated in Montreal and started to spread to Northern United States about the same time it became very popular in Canada.

Fan Base

- Some ice hockey is a sport that is played mostly in North America and Canada, most of the fan base is located in those areas.
- Since ice hockey originated in Canada, a lot of fans come to the Canadian hockey play, and having long travel path to see their teams.



Diffusion



- Field hockey relocated to Canada (relocation diffusion)
- Field hockey changed to ice hockey
- Ice hockey spread contagionally throughout North America (contagious diffusion)
- Ice hockey also spread throughout the world and is now played in many countries

Sports Culture

Ice hockey is considered an winter sport. The first reference comes from the hockey in Canada and the US. Although it is a major sport in America, in Canada, ice hockey is the equivalent of football. In the past, many communities had hockey rinks made in the winter. Many communities had hockey rinks made in the winter. Many communities had hockey rinks made in the winter. Many communities had hockey rinks made in the winter.



Rules and Basic Information Cost

The game is played on an ice rink. The rink is 200 feet long and 85 feet wide. The game is played on an ice rink. The rink is 200 feet long and 85 feet wide. The game is played on an ice rink. The rink is 200 feet long and 85 feet wide.



Fun Facts & Quotes

"A hockey is a winter that cheer and shouts. We are in a world of a stick sticks of redwood sticks."

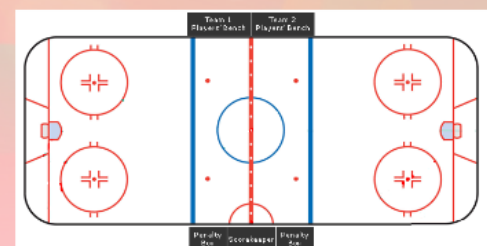


Changes Throughout the History

- Ice hockey has spread to many places in the world.
- Some hockey has spread to many places in the world.
- Some hockey has spread to many places in the world.
- Some hockey has spread to many places in the world.

Rules and Basic Information

- There is a 20-minute game. The first 15 minutes are the first half, the last 5 minutes are the second half.
- The game is played on an ice rink. The rink is 200 feet long and 85 feet wide.
- The game is played on an ice rink. The rink is 200 feet long and 85 feet wide.
- The game is played on an ice rink. The rink is 200 feet long and 85 feet wide.



Introduction

Our sport is ice hockey. Ice hockey is a sport played in an ice rink or on a frozen body of water in the winter. Ice hockey originated in Montreal, Canada. The sport developed from field hockey which was first played around 4,000 years ago in Egypt. The Stanley Cup is the ultimate seasonal win for an ice hockey team.



Development

- Field hockey was played with balls and curved sticks which changed into flat sticks and rubber pucks when playing ice hockey
- Due to the snow in Canada, instead of playing field hockey, ice hockey was created to be played in the winter on sheets of ice
- Technology changed the game of ice hockey by developing ice rinks that gave the opportunity of playing ice hockey inside
- Ice hockey originated in Montreal and started to spread to Northern United States about the same time it became very popular in Canada

ey is a
n a
nter.
eal,
om
ayed

