

The Ingenuity Imperative: What Big Data Means for Big Business

Reconstruction Review

- Lincoln, Johnson, and Congressional Reconstruction
- Southern reaction to Reconstruction
- End of Reconstruction



Thecasesolutions.com


The Entrepreneurs



Thecasesolutions.com

The Railroads

- first big business/modern corporation
- aid to economic growth
- time zones
- pocket watches



Thecasesolutions.com



The Rise of Big Business and the Second Industrial Revolution

Before the Civil War, the range of the South led growth. The age of Centralization dominated an industrial and economic growth in production. Several new business practices, new ideas, and leadership from the government.



Thecasesolutions.com

Ideas



Thecasesolutions.com

New Business Practices



Thecasesolutions.com

Thecasesolutions.com

The Ingenuity Imperative: What Big Data Means for Big Business

Reconstruction Review

- Lincoln Johnson and Congressional Reconstruction
- Southern reaction to Reconstruction
- End of Reconstruction



Thecasesolutions.com


The Entrepreneurs



Thecasesolutions.com

The Railroads

- first big business/modern corporation
- aid to economic growth
- time zones
- pocket watches



Thecasesolutions.com. Primary Photo: U.S. May 31, 1864

Ideas



Thecasesolutions.com

New Business Practices



Thecasesolutions.com

The Rise of Big Business and the Second Industrial Revolution

- Before the Civil War
- Surge of Industrial Growth 1840-1900
- Major developments include:
- abundant natural resources, growing population, free trade, new business practices, machines, and new and friendly governments



Thecasesolutions.com



Thecasesolutions.com

Reconstruction Review

- Lincoln, Johnson, and Congressional Reconstruction
- Southern reaction to Reconstruction
- End of Reconstruction



Thecasesolutions.com

The Rise of Big Business and the Second Industrial Revolution

- Before the Civil War
- Surge of Industrial Growth 1865-1900
- Huge Corporations dominate
- abundant natural resources, growing population, inventions, new business practices, new ideas, and business friendly government

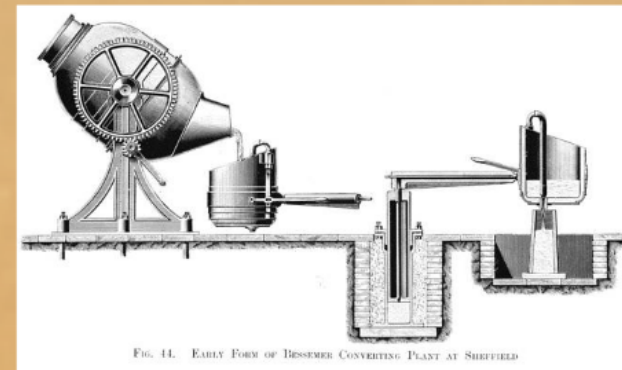
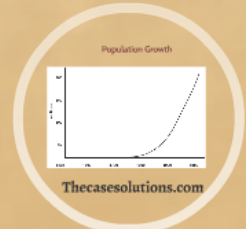
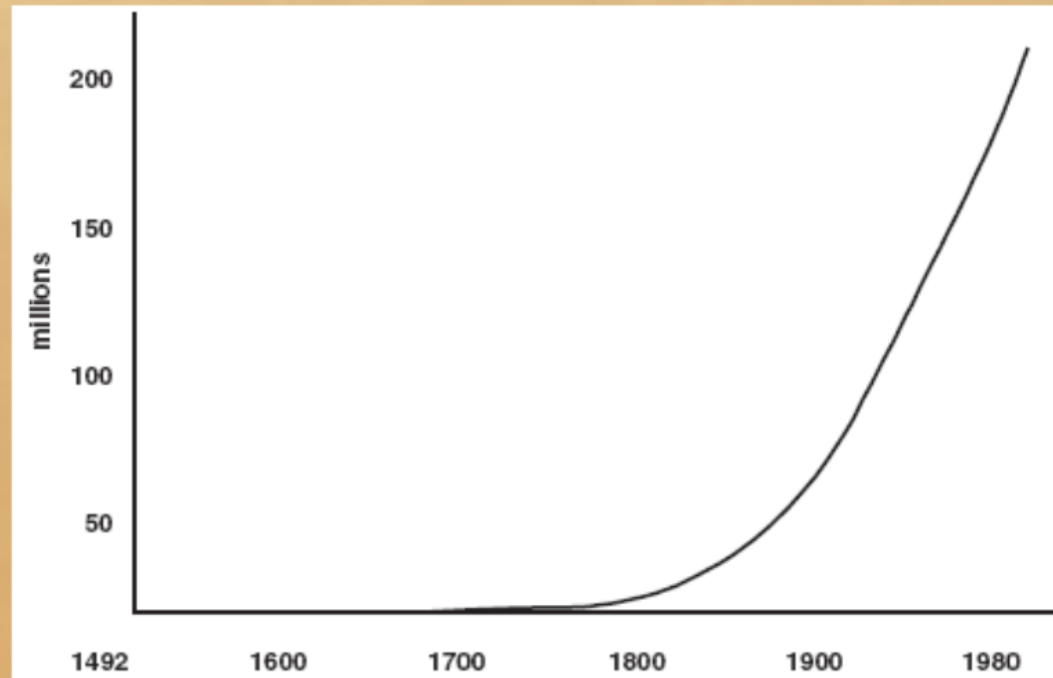


FIG. 44. EARLY FORM OF BESSEMER CONVERTING PLANT AT SHEFFIELD

Bessemer Steel

Thecasesolutions.com

Population Growth



Thecasesolutions.com

Thecasesolutions.com

Inventions



Abundant and Cheap Natural Resources

coal
iron ore
copper
lead
oil
timber
labor



Thecasesolutions.com

New Business Practices

Corporations and Trusts



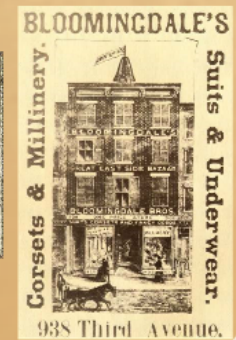
Thecasesolutions.com

Monopolies

Vertical Integration and Horizontal Integration



Mass Marketing



Thecasesolutions.com

Corporations and Trusts



Thecasesolutions.com