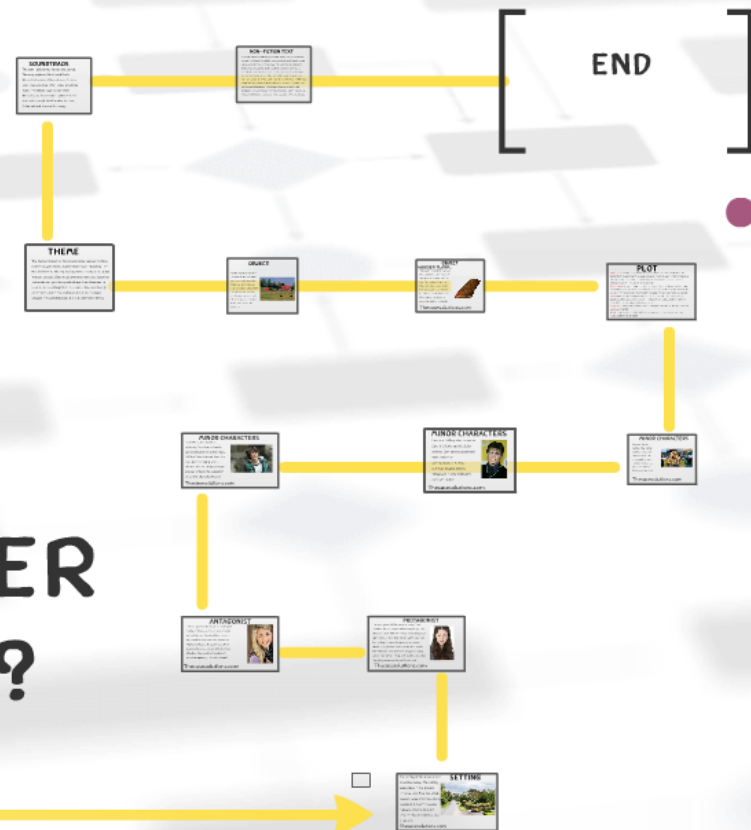


SCANDAL AT SOCIETE GENERALE: ROGUE TRADER OR WILLING ACCOMPLICE?

THECASESOLUTIONS.COM



SCANDAL AT SOCIETE GENERALE: ROGUE TRADER OR WILLING ACCOMPLICE?

THECASESOLUTIONS.COM

SETTING

The setting of the novel is Colt River, New Jersey. The setting takes place in the present universe. Colt River is a small, peaceful area with not a lot of people in it. Nothing usually happens which is why any crime in this area will become a big deal.



Thecasesolutions.com

PROTAGONIST

The protagonist of this novel is Finley Claire Jacobs. Finn is a 16-year old tomboyish girl. She works in a farm with her family and is very good with animals. She's best friends with Chloe and has to keep Chloe's disappearance a secret, which is very difficult because she has to fake her emotions. Finn faces the struggle of acting sad in front of her family and friends when she's the only person who knows Chloe's safe.

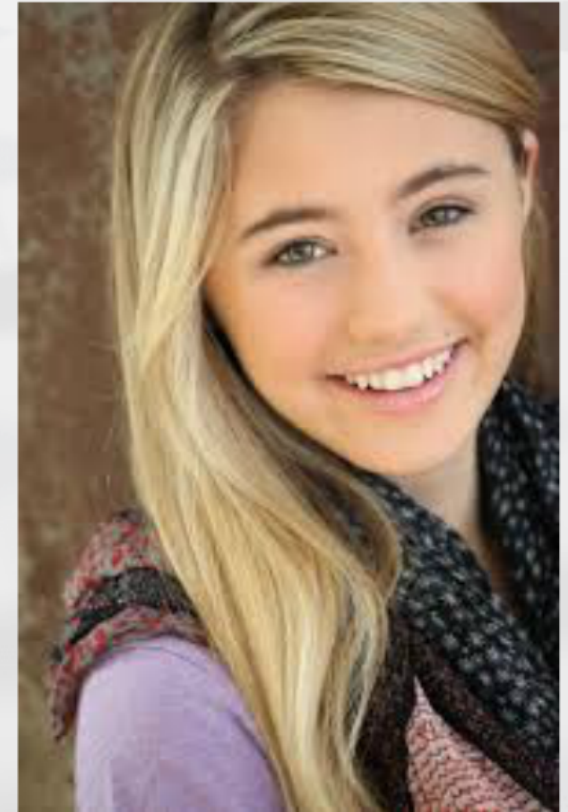


Thecasesolutions.com



ANTAGONIST

The antagonist in the novel is Chloe Marie Caffrey. Chloe is a popular and attractive girl and the best friend of Finn. Chloe is very sensitive and cares a lot about her future and grades. She planned out her disappearance so she can attract college attention. She blocks out everyone's emotions especially Finn's, for herself.



Thecasesolutions.com

MINOR CHARACTERS

Dean West, also known as stuttering Dean due to how he can't pronounce his words clearly, is Chloe's love interest. Dean is a shy, quiet, teenage guy who dreams to have a bakery. He gets accused of being the suspect of Chloe and later gets arrested.



Thecasesolutions.com

MINOR CHARACTERS

Cameron Caffrey, also known as Cam, is Chloe's autistic older brother. Cam cannot speak and makes noises as communication. He was oblivious towards Chloe's kidnap and is very intelligent even with autism.



Thecasesolutions.com

MINOR CHARACTERS

Lila Ann Price is a reporter. She lost her daughter 3 years ago and ever since then she wanted to help families find their lost kids. She interviews Finn later in the book.



Thecasesolutions.com

OBJECT

WOODEN PLANK:

This object is significant because Finn uses this to harm Chloe. At first when Chloe told her to hit her, Finn hesitated. But when Finn did hit her, she took out all her anger which caused her to hit Chloe very hard. Now when Finn looks at this object, it makes her feel sick and guilty.



Thecasesolutions.com