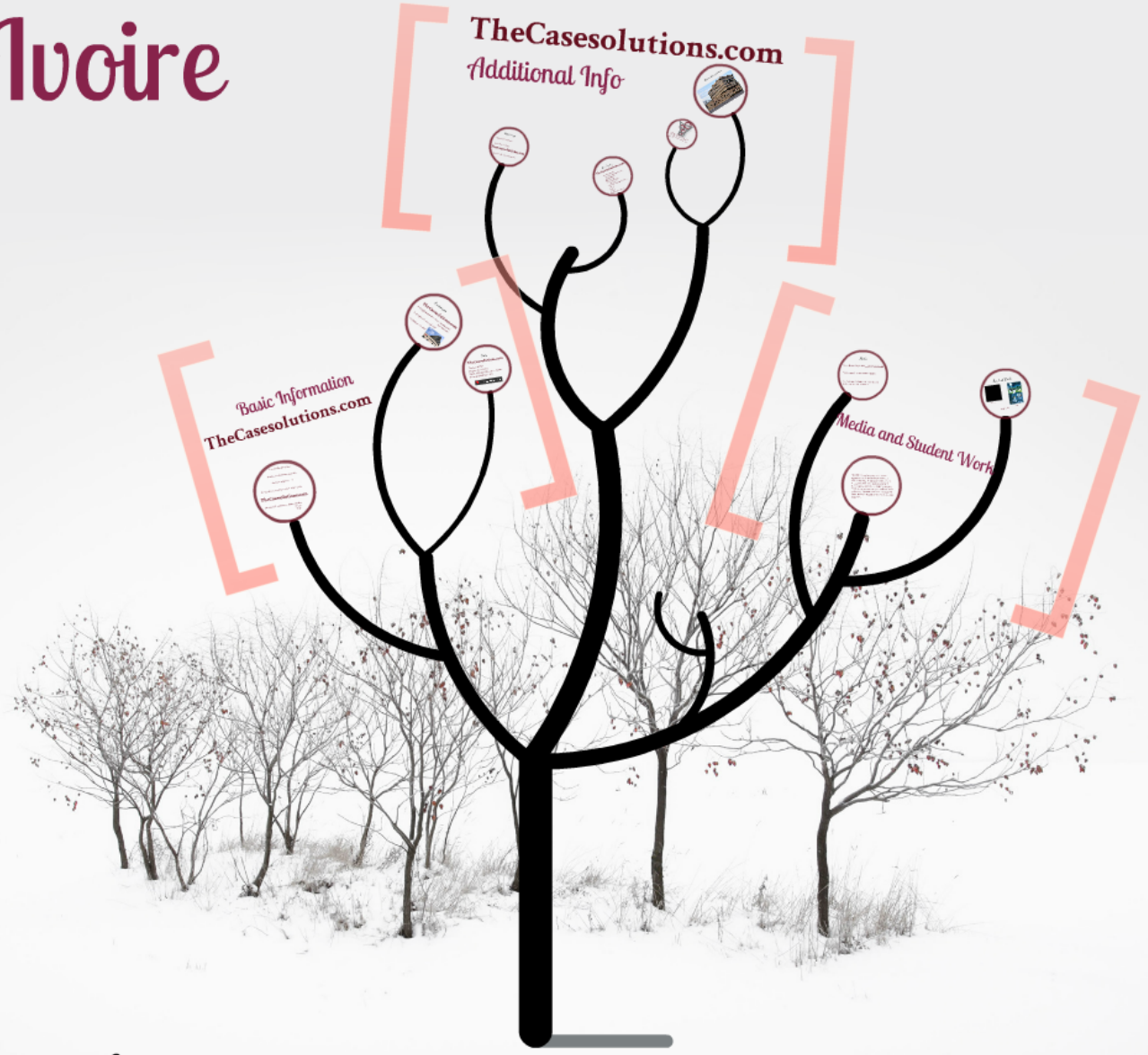
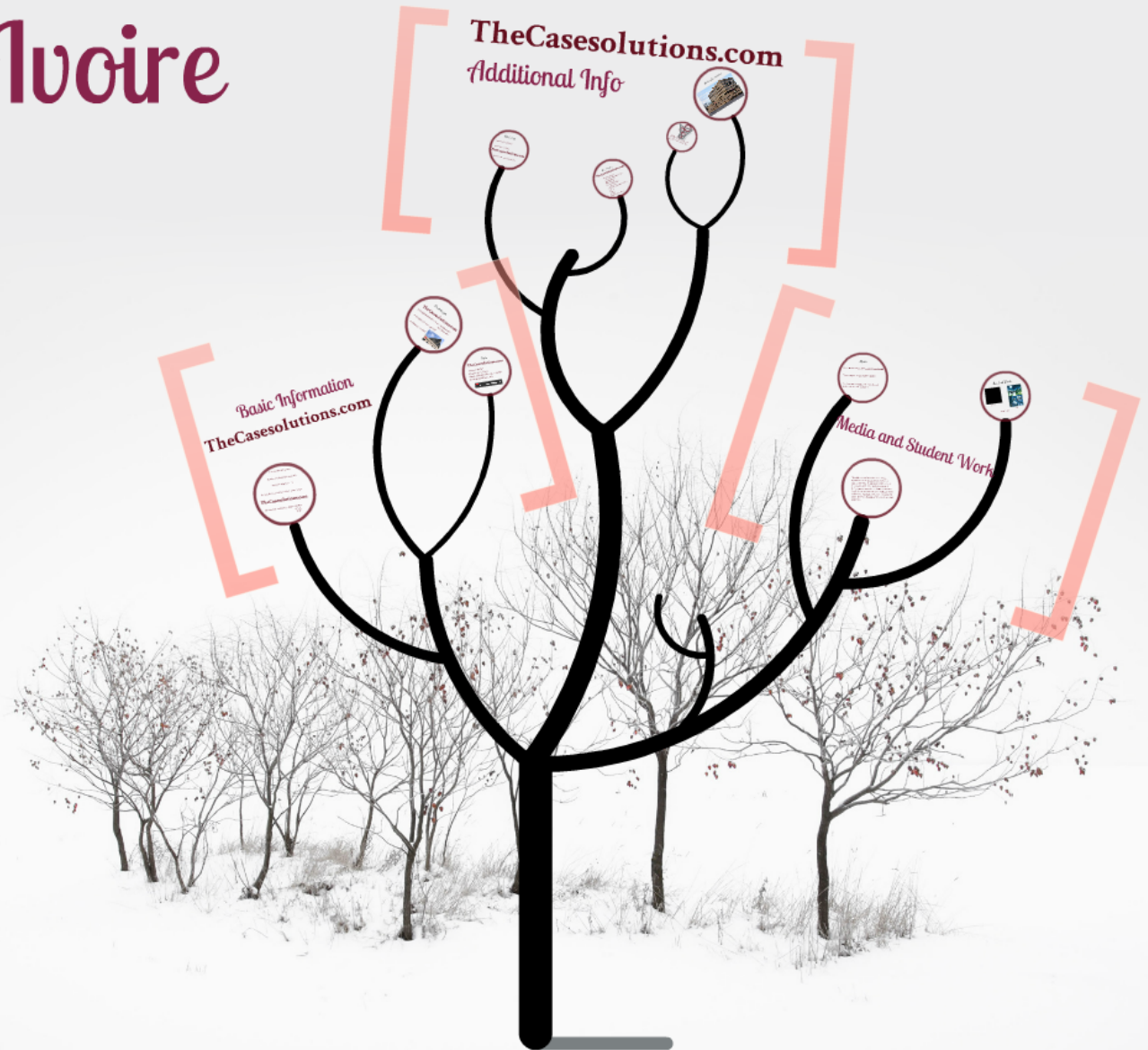


# Olam: Building a Sustainable Supply Chain in Cote d'Ivoire



*TheCasesolutions.com*

# Olam: Building a Sustainable Supply Chain in Cote d'Ivoire



*TheCasesolutions.com*

# Basic Information

## TheCasesolutions.com

Location: Brookline, Mass.  
Number of students attending: 1483  
Student/Faculty ratio: 13:1  
Average GPA of attending students: 2.98uw 3.22w

**TheCasesolutions.com**

Average SAT of attending students: 480 Math  
488 CR  
535 W

*Percentages*

**TheCasesolutions.com**

% of sophomores that remain: Full time: 63%  
% of applicants accepted: 36% Part time: 48%  
Graduation rate: 44%



*Costs*

**TheCasesolutions.com**

Tuition: \$92700  
Program Fees: \$5560  
Books and Digital Resources: \$2000  
Room & Board: \$111,300



Location: Brookline, Mass.

Number of students attending: 1483

Student/Faculty ratio: 13:1

Average GPA of attending students: 2.98uw 3.22w

**TheCasesolutions.com**

Average SAT of attending students: 480 Math

488 CR

535 W

# *Percentages*

## **TheCasesolutions.com**

% of sophomores that return: Full time: 63%  
Part time: 48%

% of applicants accepted: 36%

Graduation rate: 44%



## *Costs*

# **TheCasesolutions.com**

Tuition: \$92700

Program Fees: \$5560

Books and Digital Resources: \$2000

Room & Board: \$111,300

**Ai** The New England Institute of Art®

# TheCasesolutions.com

## Additional Info



# *Scholarships*

Academic Merit Scholarship

Inabeth Miller Scholarship

**TheCasesolutions.com**

National Art Honor Society Scholarship



*Core Courses*

**TheCasesolutions.com**

Freshman Seminar

Contemporary Communications

English Selections

Media Literacy

Humanities Selections

College Algebra

Advanced College Algebra and Trig

Calculus

Physics

Acoustics

Social Science Selection