



parc  
Xerox Innovation Group - From  
Products to Services  
Science and Technology Policy  
TheCaseSolutions.com

John Aho Research Center  
The Case Solutions.com

TheCaseSolutions.com



# Xerox Innovation Group - From Products to Services

*Science and Technology Policy*

[TheCaseSolutions.com](http://TheCaseSolutions.com)



**Office of the Future**

High-estimated researchers after WWII  
Cross and co-research program  
Nurtured for future



Open culture for researchers  
Unlimited resource for research  
Small group research

[TheCaseSolutions.com](http://TheCaseSolutions.com)

**Palo Alto Research Center**

Established in 1970 by Dr. George Pake  
as a Research Center of Xerox

Has invented many new technologies  
in computer science field



managed their Intellectual Properties  
very loosely

[TheCaseSolutions.com](http://TheCaseSolutions.com)




**Xerox Innovation Group - From  
Products to Services**

*Science and Technology Policy*

[TheCaseSolutions.com](http://TheCaseSolutions.com)

***TheCaseSolutions.com***



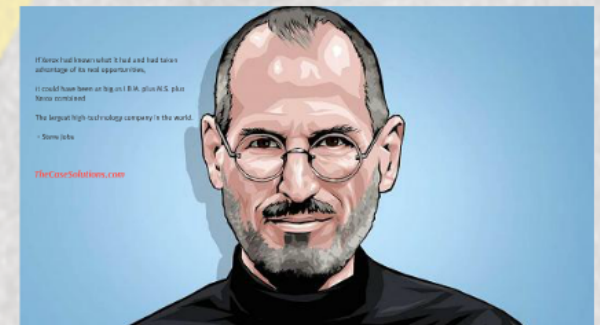
# *Palo Alto Research Center*

Established in 1970 by Dr. George Pake  
as a Research Center of Xerox

Has invented many new technologies  
in computer science field

managed their Intellectual Properties  
very loosely

*TheCaseSolutions.com*





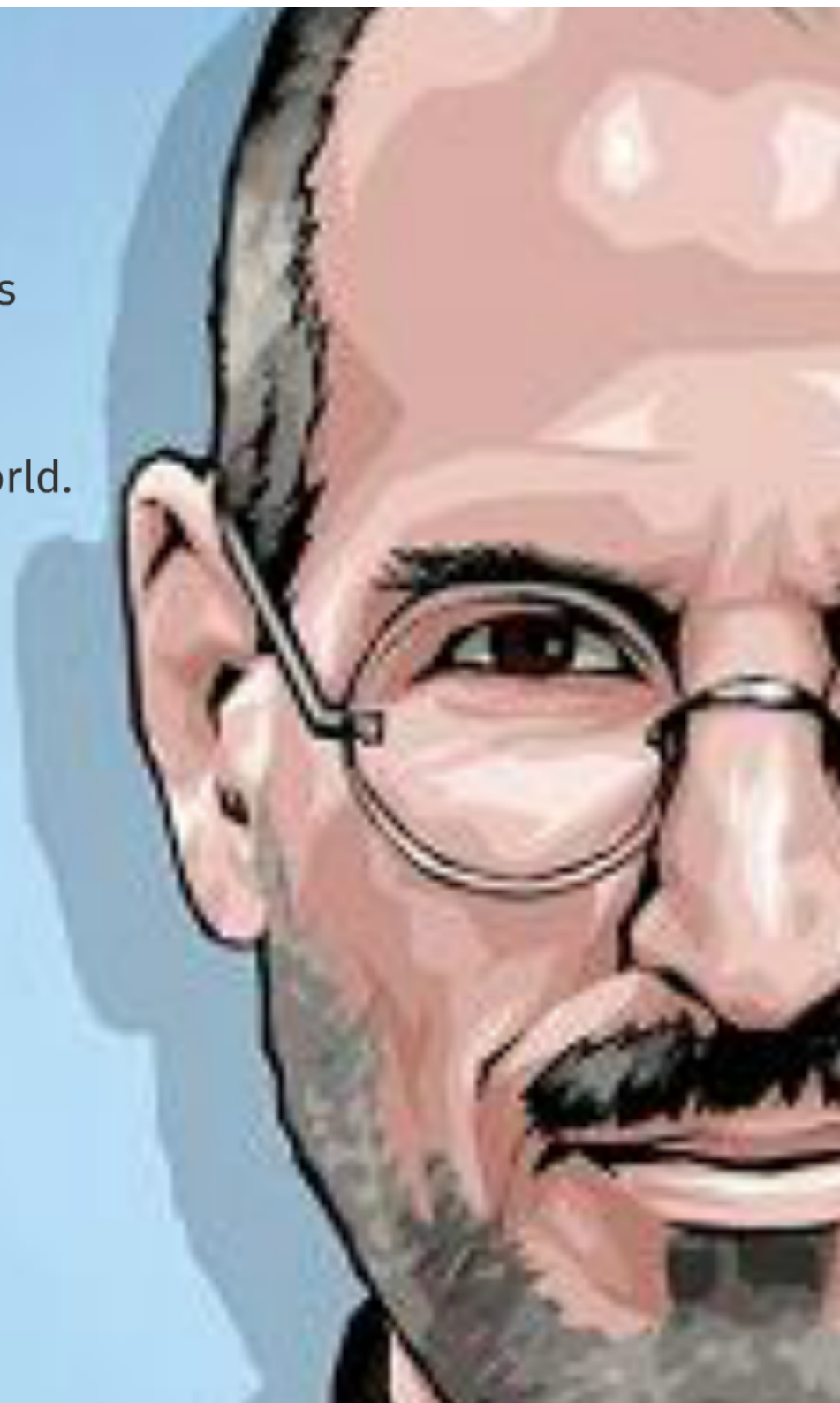
If Xerox had known what it had and had taken advantage of its real opportunities,

it could have been as big as I.B.M. plus M.S. plus Xerox combined

The largest high-technology company in the world.

- Steve Jobs

*[TheCaseSolutions.com](http://TheCaseSolutions.com)*



# *Office of the Future*

High educated researchers after WWII  
Cross and co-research program  
Tolerate for failure



Open culture for researchers  
Unlimited resource for research  
Small group research

*[TheCaseSolutions.com](http://TheCaseSolutions.com)*



# Loose IP Management

Spin offs are greater than its....

Finally, PARC turns into....

ParcPlace

AWPI

Documentum

Semaphore

Document Sciences

LiveWorks

CTI

X ColorgrafX

DpiX

PlaceWare

Inxight

Uppercase

3Com

VLSI

GRiD

Aurora

Optimem

Metaphor

Komag

SDLI

Adobe

Microlytics

SynOptics

StepperVision

The screenshot shows the PARC website with a navigation menu, a search bar, and several content sections. The navigation menu includes services, expertise, events, news room, and company. The main content area features a large image of people working together, followed by a paragraph about PARC's business model. Below this, there are three columns of text under the heading 'SPOTLIGHTS', each with a sub-heading and a brief description. The first column is 'creating', the second is 'co-developing', and the third is 'enabling'. At the bottom of the page, there is a footer with copyright information and a 'TheCaseSolutions.com' watermark.

TheCaseSolutions.com



# Closed Innovation

The smartest work for us

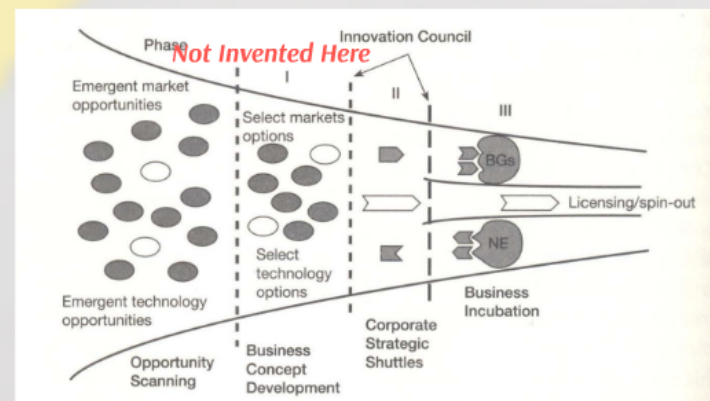
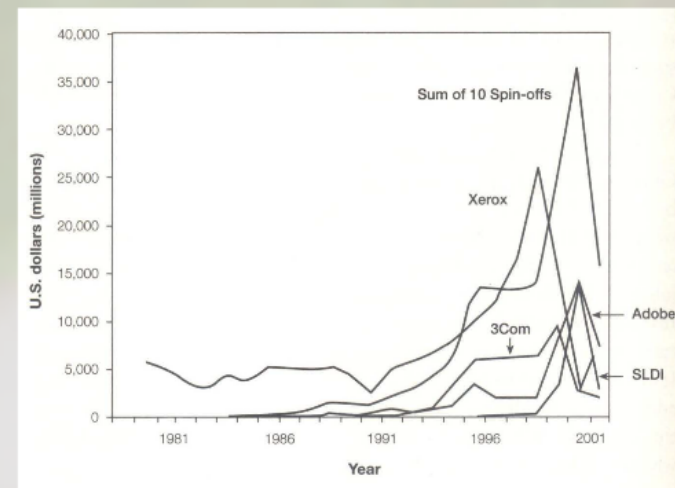
We research and product

We launch the product when we made research

First mover will take it all

Good idea makes the winning

Control the IPs to win the game

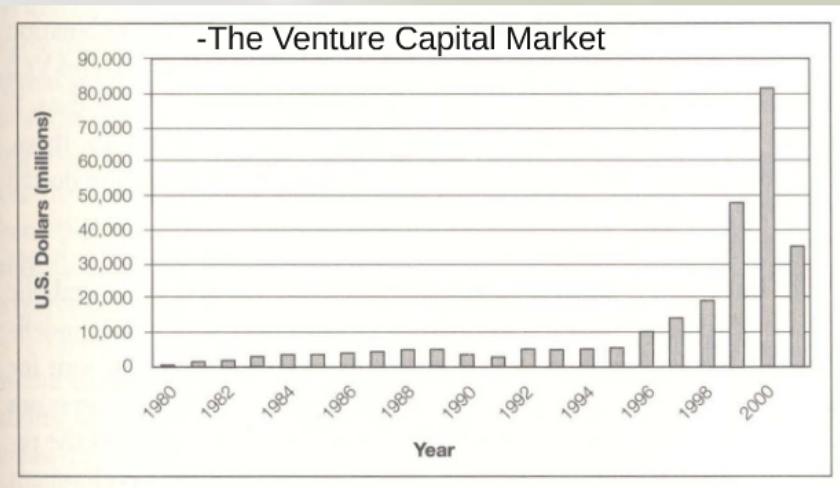


# Broken Linkage of Circle

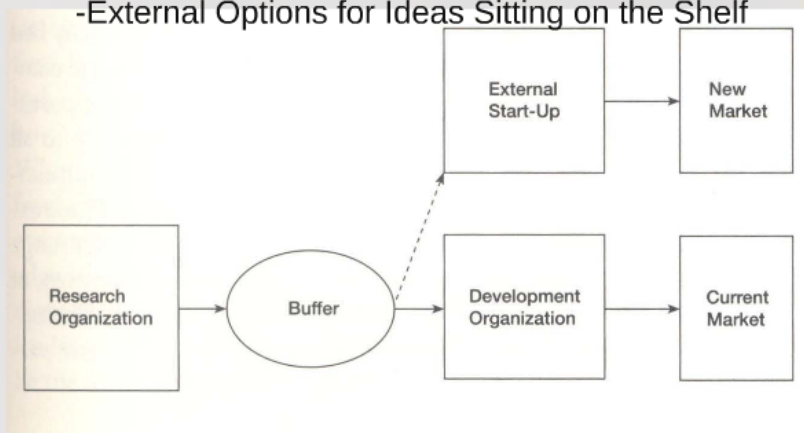
-The Increasing Availability and Mobility of Skilled Workers

-The Venture Capital Market

[TheCaseSolutions.com](http://TheCaseSolutions.com)



-External Options for Ideas Sitting on the Shelf



-External Options for Ideas Sitting on the Shelf

-The Increasing Capability of External Suppliers