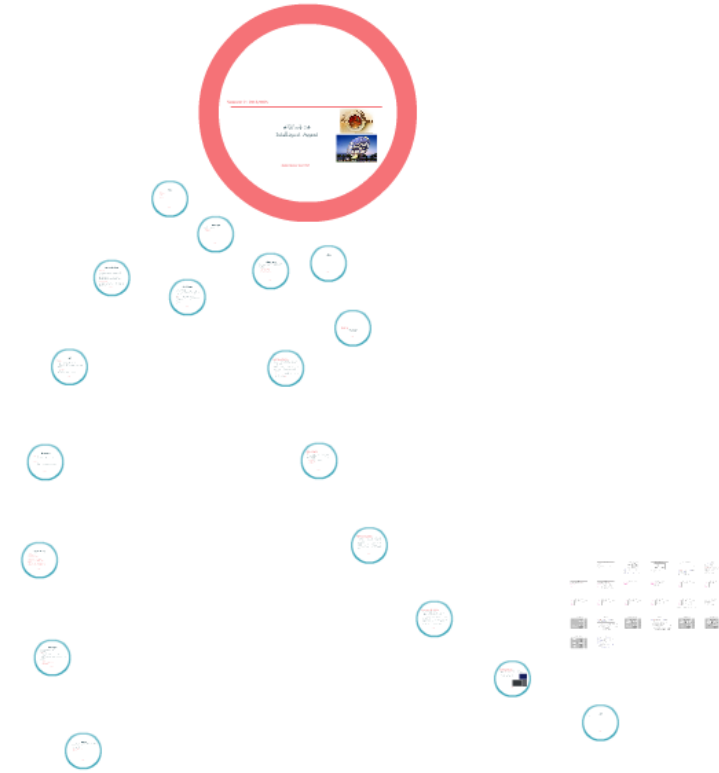
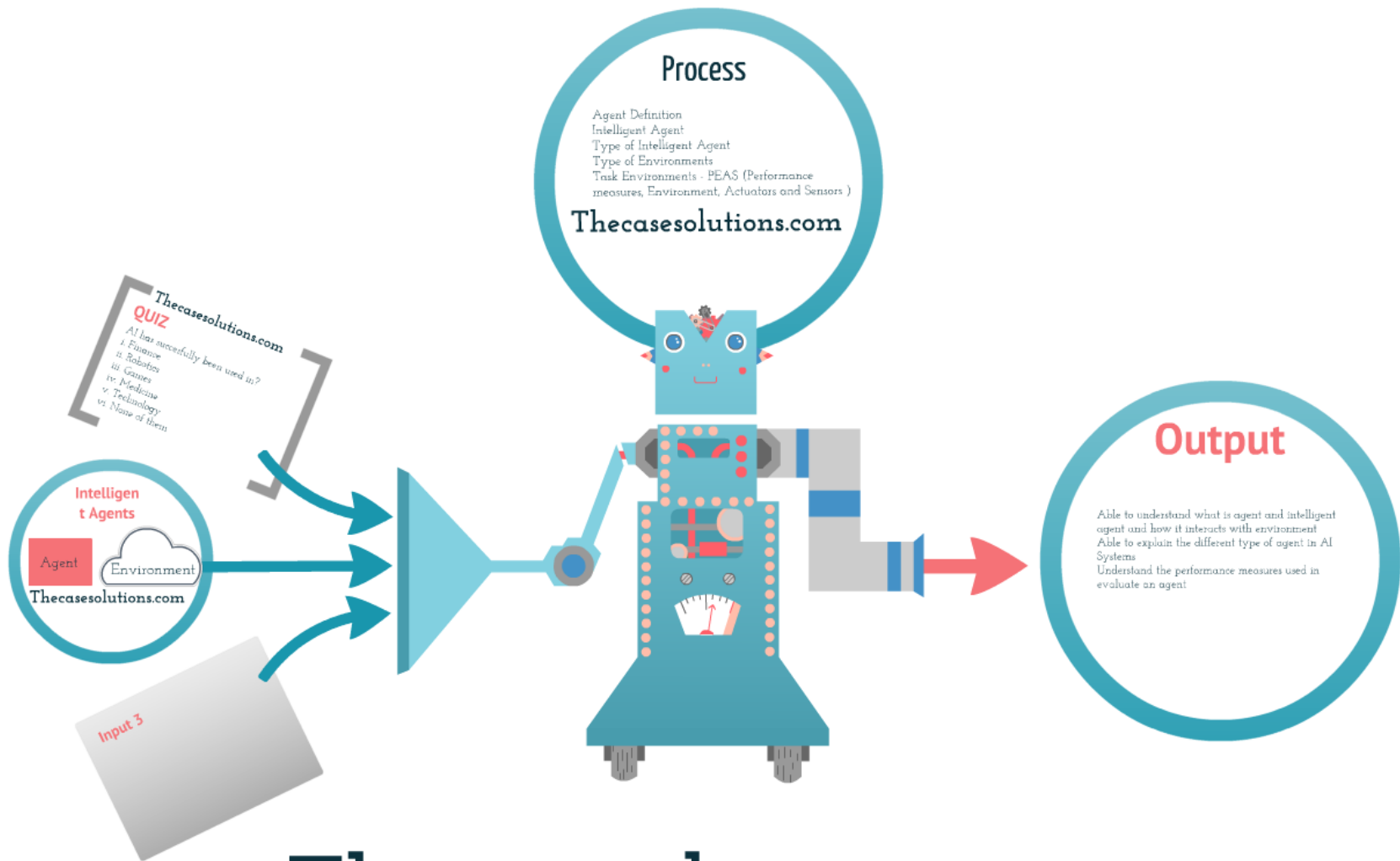


Thecasesolutions.com

Sogeti TeamPark - Designing Intelligent Organizations for the Future





Thecasesolutions.com

Sogeti TeamPark - Designing Intelligent Organizations for the Future

Thecasesolutions.com

QUIZ

AI has successfully been used in?

- i. Finance
- ii. Robotics
- iii. Games
- iv. Medicine
- v. Technology
- vi. None of them

Intelligent Agents



Agent

Environment

Thecasesolutions.com

Process

Agent Definition

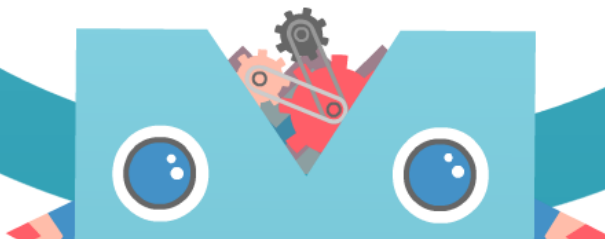
Intelligent Agent

Type of Intelligent Agent

Type of Environments

Task Environments - PEAS (Performance measures, Environment, Actuators and Sensors)

Thecasesolutions.com



OUTPUT

Thecasesolutions.com

Able to understand what is agent and intelligent agent and how it operates with the environment
Able to understand the different type of agent in AI systems
Understand the performance measures used in evaluate an agent

Abdul Rahman Mat, FCSIT

Agent & Intelligent Agent

What is an Agent?

Is an entity that can be viewed as perceiving its environment through sensors and acting upon its environment through effectors [Russel & Norvig, 1995]

Thecasesolutions.com

What is Intelligence Agents?

Are software entities that carry out some set of operations on behalf of a user or another program with some degree of independence or autonomy, and in doing so, employ some knowledge or representation of the user's goals or desires [IBM White Paper, 1995]

Abdul Rahman Mat, FCSIT

Agent

Example:

i. **Travel Agency**

Task: Booking a flight ticket & facilities in order to go for vacation oversea.

Initial goal: Go for Umrah, Mekah, Saudi Arabia

Act independently, booking everything (flight to-fro, hotel, transportation, etc) - need to communicate with other agent & recommend anything (related Umrah's tasks) where appropriate

ii. **Agent for do shopping**

Goal: Buy some carrots

Act independently, communicate with other agents, modify what it is doing in response to what it sees and hears

Thecasesolutions.com

Intelligent Agent

Software Agents

Operate within the confines of the computer / computer network.

Physical Agents

i.e. robots

Operate in the physical world & can perceive & manipulate objects.

Thecasesolutions.com