

# Internship Presentation

Company :  
Tetra Pak Jurong  
10 Feb 2015

Attachment period :  
8 September to 6 February

**TheCasesolutions.com**



Ahmad Muhiyetdeen  
Iskandar  
S10131767



# Pacific Park School (A)

TheCaseSolutions.com



# Internship Presentation

Company :  
Tetra Pak Jurong  
10 Feb 2015

Attachment period :  
8 September to 6 February

**TheCasesolutions.com**



Ahmad Muhiyetdeen  
Iskandar  
S10131767



# Pacific Park School (A)

TheCaseSolutions.com



# Internship Presentation

Company :  
Tetra Pak Jurong

*10 Feb 2015*



Ahmad Muhiyetdeen  
Iskandar  
S10131767

Attachment period :  
8 September to 6 February

**TheCasesolutions.com**

# Introduction of Company

## TheCaseSolutions.com

- First opened in 1982
- Specializes in Packaging, Processing and aseptic technology targeted at food and drinks.
- In Singapore, TetraPak focuses on packaging drinks.



# TheCaseSolutions.com



# My Role in Tetra Pak



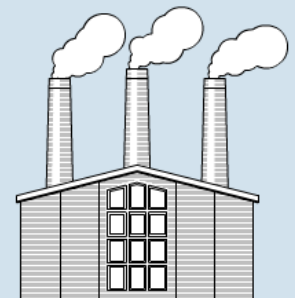
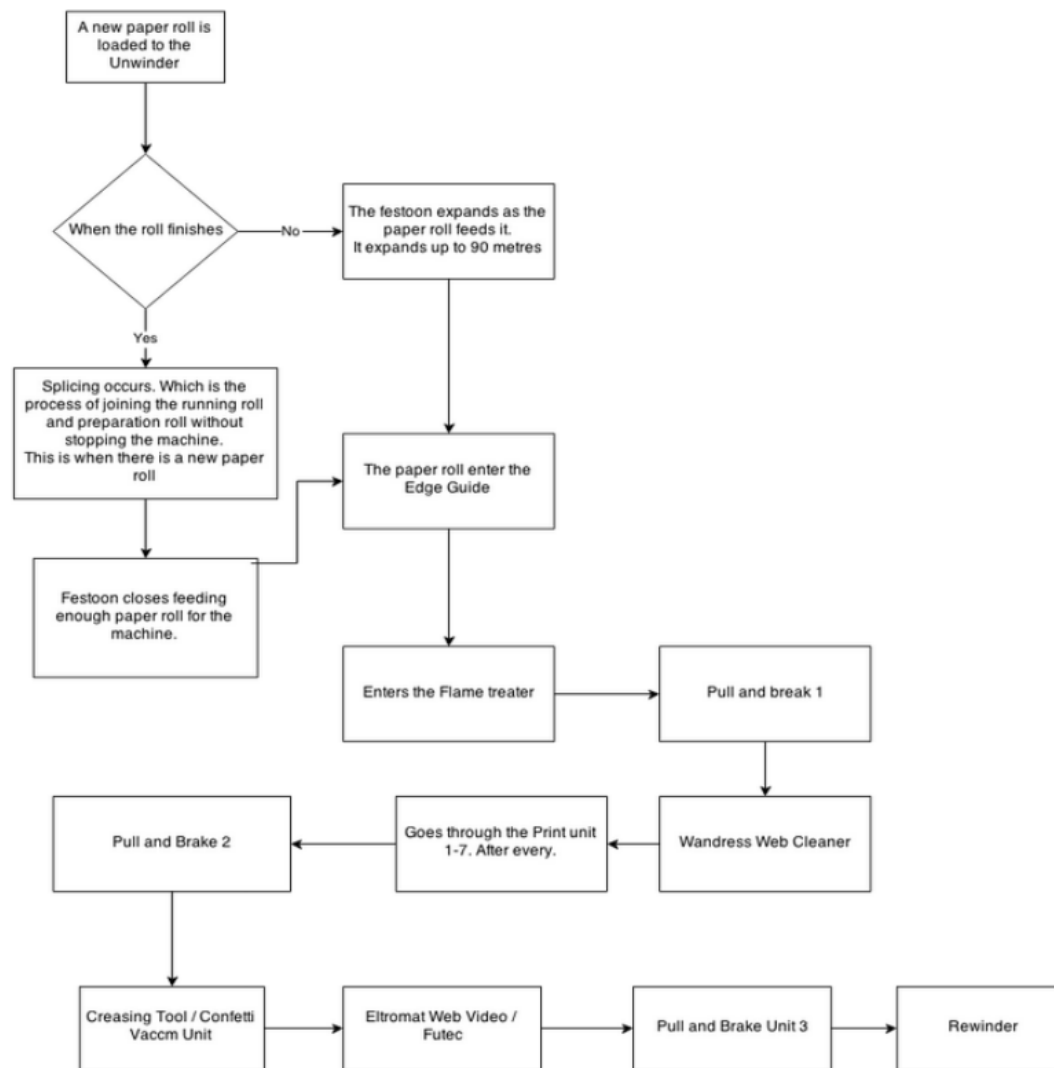
## TheCaseSolutions.com

- Attached to the Printer Section under the Maintenance Department.
- Supervised by Mr Sathiya
  - Head of Printing Section
- Helping with daily tasks



# How do Printer Machines Work?

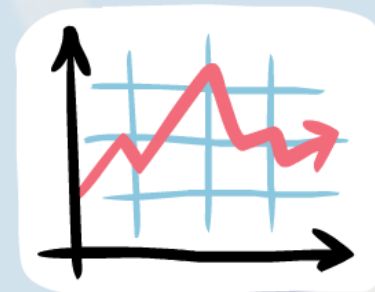
## TheCaseSolutions.com



# Tasks Accomplished

## TheCaseSolutions.com

- Operational Manual
- Procedure Writing & Checklist
- Condition Based Maintenance
- Japan institute of Plant Maintenance (JIPM) Audit
- Ink Temperature Control ( ITC )





# Operational Manual

## TheCaseSolutions.com

- All printers have a hard copy manual
  - Exception of new printer (16)
- Organization of Electrical and Mechanical drawings in Company folder
- Filing it in hard copies to be placed in library

