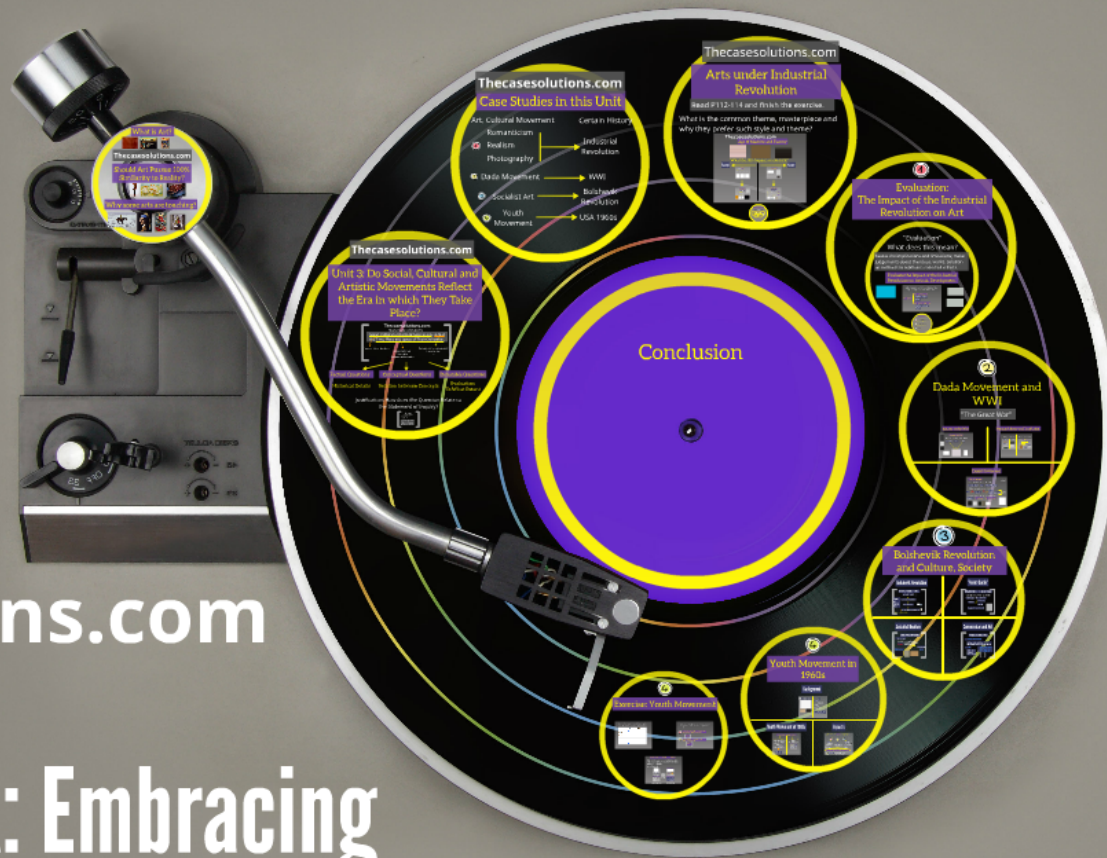


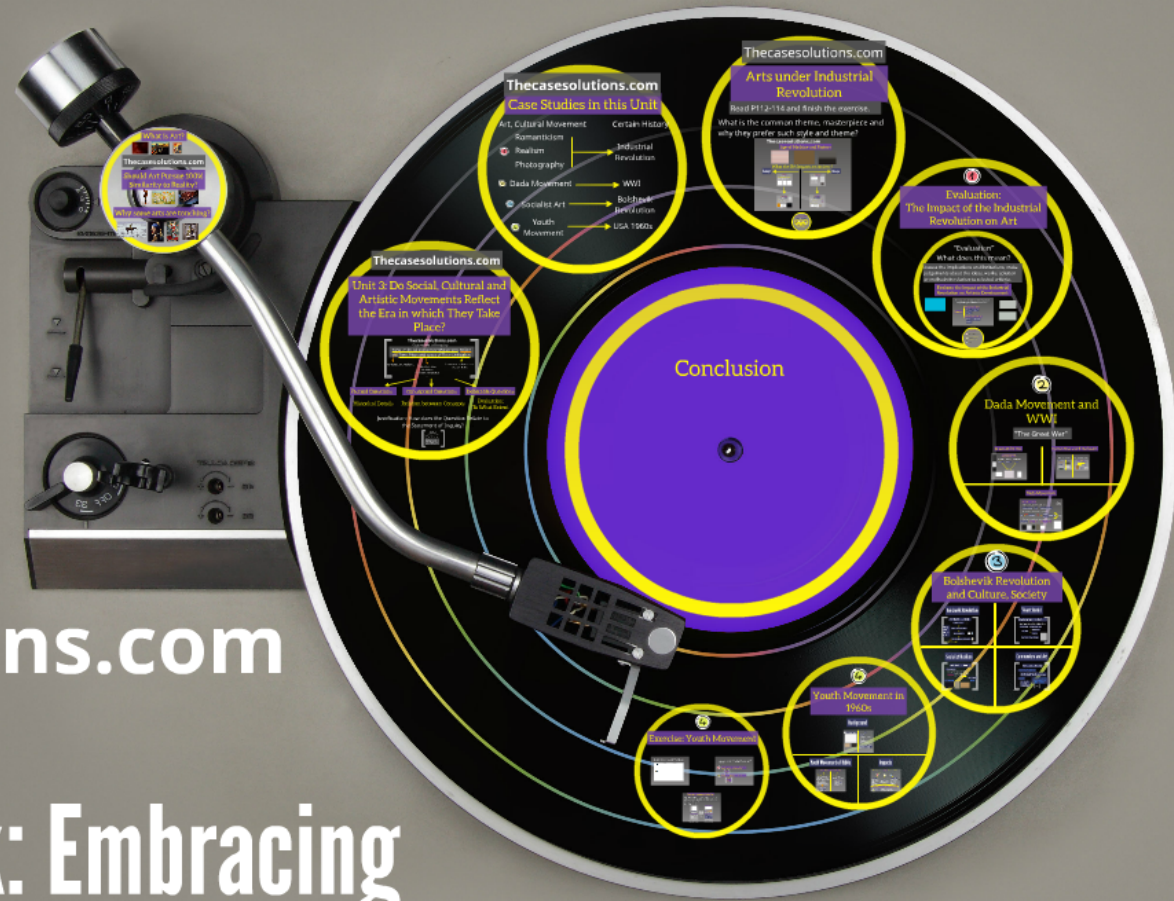
Thecasesolutions.com

The Art of Work: Embracing Artistic Enquiry to Create Value



Thecasesolutions.com

The Art of Work: Embracing Artistic Enquiry to Create Value



What is Art?

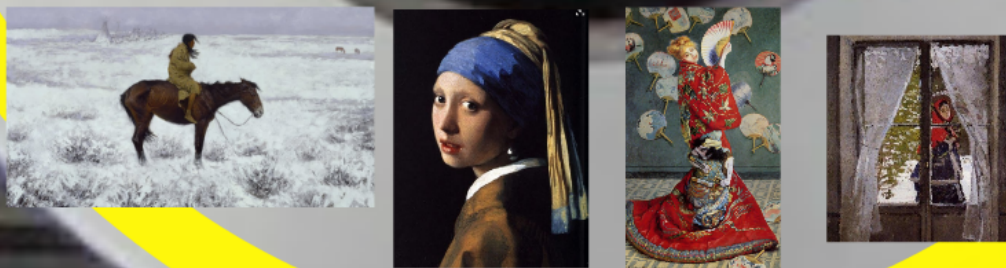


Thecasesolutions.com

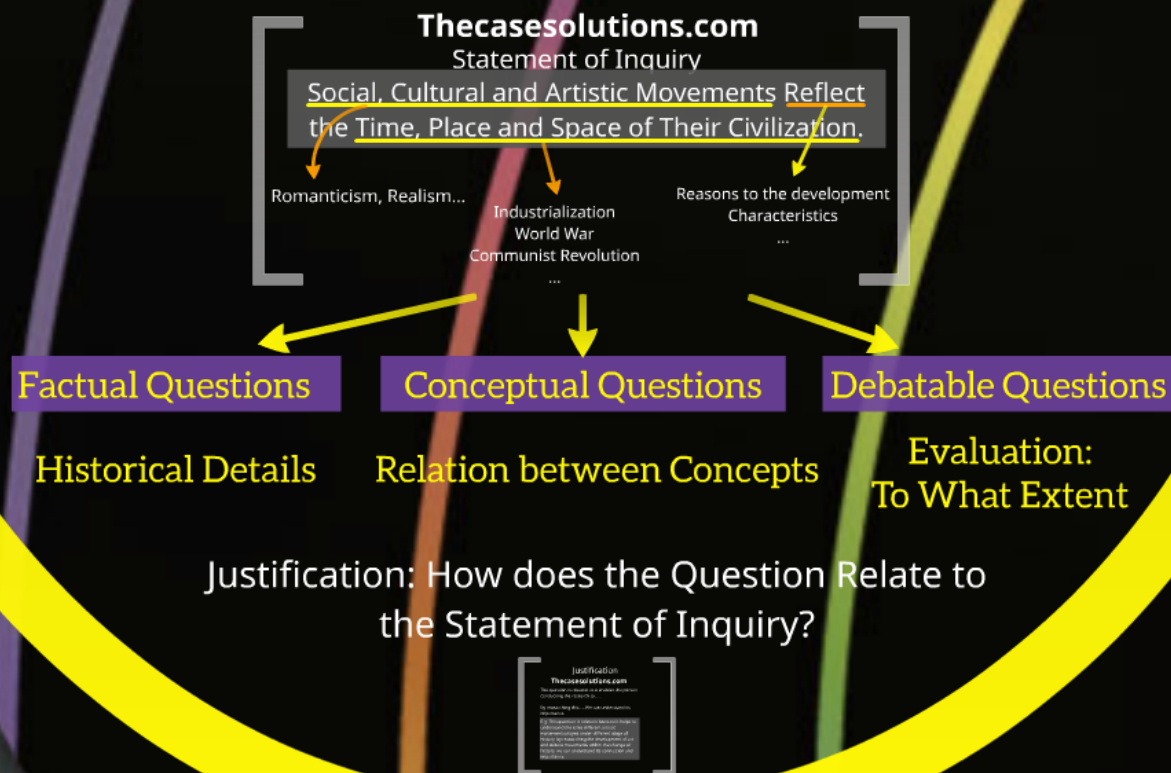
Should Art Pursue 100% Similarity to Reality?



Why some arts are touching?



Unit 3: Do Social, Cultural and Artistic Movements Reflect the Era in which They Take Place?



Place?

Thecasesolutions.com

Statement of Inquiry

Social, Cultural and Artistic Movements Reflect
the Time, Place and Space of Their Civilization.

Romanticism, Realism...

Industrialization
World War
Communist Revolution
...

Reasons to the development
Characteristics
...

ions

Conceptual Questions

Debat

Justification

Thecasesolutions.com

The question is relevant as it enables the person conducting the research to.....

By researching this.....We can understand its importance.

E.g. This question is relevant because it helps to understand the roles different artistic movements played under different stage of history, by researching the development of art and culture movements within the change of history, we can understand its connection and importance.

Thecasesolutions.com

Case Studies in this Unit

Art, Cultural Movement

Certain History

Romanticism

①

Realism

Photography

Industrial
Revolution

②

Dada Movement

WWI

③

Socialist Art

Bolshevik
Revolution

④

Youth
Movement

USA 1960s

Thecasesolutions.com

Arts under Industrial Revolution

Read P112-114 and finish the exercise.

What is the common theme, masterpiece and why they prefer such style and theme?



The Imp
Re

Thecasesolutions.com

Age of Machine and Factory



What the IR's Impacts on Society?

Accept



Realism

- The Beliefs of Realism
- Portray the world as it really was!
- Don't avoid unpleasant or uncomfortable aspects!
- Who supported this movement?
- How does it relate to Industrial Revolution?
- What were the social impacts?



Photography

The Art of the New Industrial Age

- Common Themes
- Portray and Daily Life
- Who supported photography in the 19th century?
- What were the social impacts?

Critics in Painting

Escape



Romanticism

- Beliefs of Romanticism
- Who are the audiences?
- Why did people prefer Romanticism?
- What were the social impacts?



Impressionism

Impression At the Moment

- Beliefs of Impressionism
- Against the Worldly View
- Catch the impression of a subject or moment
- Favored by the use of LIGHT
- Common Themes

Delight moments of the rising middle class
Positive view of Industrial Society

Paintings → Feelings