



Disney Competitor



Major Players

Thecasesolutions.com

- Bob Iger, CEO of Disney
- Steve Jobs, CEO of Pixar
- Jonathan Geibel, Director of Systems
- Ron Johnson, Manager of Systems
- Ed Catmull, Pixar President
- John Lasseter, Pixar Chief Creative Officer
- Andy Hendrickson, Chief Technology Officer



What's the Deal with Disney?

Thecasesolutions.com

Walt Disney Animation Studios was created by Roy and Walt Disney in 1923 in Burbank, California. The company has created animated short films and full-length feature films.

Thecasesolutions.com

Thecasesolutions.com



Teaming at Disney Animation

Thecasesolutions.com

Thecasesolutions.com

Explaining New Raw Materials

This was done by breaking into teams every time something new was introduced

- Intellectual resources
- New software development

Thecasesolutions.com

Thecasesolutions.com

What Could Have Been Done to Avoid Challenges

- Allow workers to choose their managers/teams
- Make sure to meet with individual workers
- Do not assume what the workers want
- Introduce plans before testing them out
- Keep walls

Major Challenges

afternoon

Management's decision to have teams... had a significant impact on the... of the organization's...

What did I get to do before?

- Worked on the back
- Spent company money on the back
- I worked with on the company and



Teaming at Disney Animation

Financial Security

Thecasesolutions.com

Disney had a history of financial security

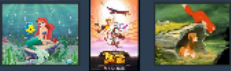
- Consistently on the cutting edge of animation technology
- Superior storytelling
- Iconic images

Disney Renaissance

Thecasesolutions.com

1989-90's saw a surge in success with a new generation of animated films:

- Aladdin
- The Lion King
- Beauty and the Beast
- etc.



Thecasesolutions.com

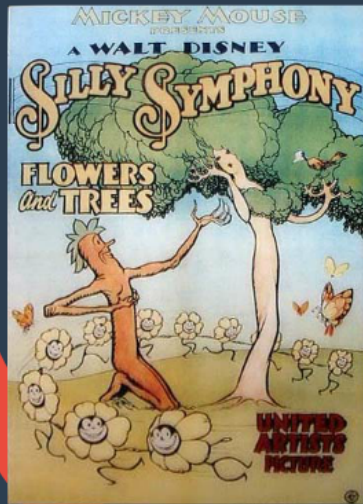


Thecasesolutions.com

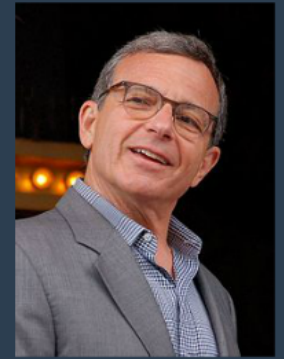
Walt Disney Animation Studios was created by Roy and Walt Disney in 1923 in Burbank, California. The company has created animated short films and full-length feature films.

Introduction of new products and services

Thecasesolutions.com

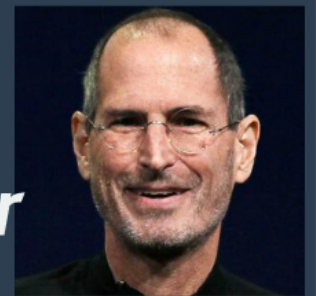


Major Players



Thecasesolutions.com

- *Bob Iger, CEO of Disney*
- *Steve Jobs, CEO of Pixar*
- *Jonathan Geibel, Director of Systems*
- *Ron Johnson, Manager of Systems*
- *Ed Catmull, Pixar President*
- *John Lasseter, Pixar Chief Creative Officer*
- *Andy Hendrickson, Chief Technology Officer*



Exploiting New Raw Materials

Thecasesolutions.com

This was done by breaking
into teams every time
something new was introduced

- intellectual resources
- new software development



Thecasesolutions.com

THE OPPORTUNITY

Once Bob Iger was announced CEO of Disney, he went to Steve Jobs to form a deal to buy Pixar.

After one week of discussing the details they had a deal.

In 2006, Disney acquired Pixar and the changes to the company started happening right away.

Jonathan Geibel and Ron Johnson were both promoted to the Systems Team to create a new teaming structure.

Geibel and Johnson both have spoke frequently about the management and had similar beliefs on how the operation and technical teams should be redone.

Introduction of new products and

Financial Security

Thecasesolutions.com

Disney had a history of financial security

- Consistently on the cutting edge of animation technology
- Superior storytelling
- Iconic images

Disney Renaissance

Thecasesolutions.com

1989-90's saw a surge in success with a new generation of animated films:

- *Aladdin*
- *The Lion King*
- *Beauty and the Beast*
- etc...

