

TheCaseSolutions.co

SSCA vs Sub-Internship

How Do I Set One Up?

- If unsuccessful -> RCSI set up notes
 - Questionnaire with preference for location, specialty, team
 - Closes 3 weeks before start (in case you falls through...)

THANKS FOR

BEST OF LUCK WITH

HUNTING!

samanthaknight@rcsi.ie

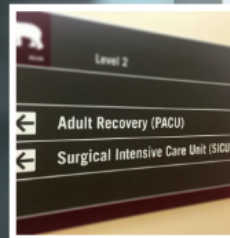
[Return to top](#)

• Resuscitations TheCase9



- 6:30am - Juniors/Seniors/Med students pre-noon
- Noon - Open with attendance

Vanderbilt University Medical Center: Elective Surgery Schedule



TheCaseSolutions.com

General Tips/Tricks

- You will not be a superstar... at first
- You may hate it... at first
- Ward smarts - way below average
- Practical skills - average
- Knowledge - above average
- Surgery = adult version of high school
- Textbooks: Surgical Recall, SC2 Surgery text, Clinical Surgery, Grey's Anatomy flashcards OR Essential Anatomy
- Eat, sleep, and pee when you can... seriously
- "...steel bladder, cast-iron stomach, heart of gold."
- Working with other IMGs is difficult... make the best of the situation
- Ask the CMGs for help when you need it!
- Take each surgeon's personality in stride
- The "perfect med student"... never pimps, never complains, never lies, KNOWS what needs to be done, loves the OR

TheCaseSolutions.com

My Summer Schedule...

- Finished SC1 June 16th
- **Elective #1** Hepatobiliary and Pancreatic Oncology @ University of Toronto
 - June 20th-July 1st
- **Elective #2** Trauma Surgery @ University of Manitoba
 - July 4th-30th
- **Elective #3** Solid Organ Transplant @ Icahn School of Medicine at Mount Sinai (Sub-I)
 - August 1st-26th
- **Step 2CK** @ Philadelphia
 - August 27th
- **Elective #4** Acute Care Service @ University of Manitoba
 - August 29th-September 23rd
- **NAC OSCE** @ Ottawa
 - September 17th
- **Medical rotation** @ Beaumont Hospital
 - September 26th-October 21st
- **Elective #4** Pediatric Surgical Oncology @ Tennessee (SSCA)
 - October 24th-November 13th

TheCaseSolutions.com

SSCA vs Sub-Internship



Elective #1 - Hepatobiliary Pancreatic Oncology & Minimally-Invasive Surgery @ University of Toronto

- 5am-7pm
- 3 Med Students, 1 Junior, 1 Senior Resident, 1 Attending
- +/- 10 patients on service
- 5am - Pre-rounds
- 6am - Rounds with the junior and senior resident
- 7am - Paper rounds with attending
- All ward work done on morning rounds
- ORs everyday
- 5pm - rounds with entire team
- 1/2 day clinics with 65+ patients
- Teaching in OR
- Endoscopy 1x/week
- 1 in 7 call shifts

TheCaseSolutions.com



Elective #2 - Trauma Surgery @ University of Manitoba

- 6:30am-6pm
- +/-65 patients on service, +/- off-service patients
- 3 Med students, 4 Junior Residents, 2 Senior Residents, 2 PAs
- Call shifts 1 in 3
- 6:30am - Junior residents/Med students pre-round (5-8 pts each)
- 8am - Entire team rounds
- 30+ consults/day
- ORs very sporadic
- 75% time spent in Emergency Room with consults

TheCaseSolutions.com



- Resuscitations
- ATLS training
- Attendings switch every week
- Formal teaching by attendings on ward
- Physically/mentally exhausting
- Hospital politics

General Tips/Tricks



- You will not be a superstar... at first
- You may hate it... at first
- Ward smarts - way below average
- Practical skills - average
- Knowledge - above average
- Surgery = adult version of high school
- Textbooks: Surgical Recall, SC2 Surgery text, Clinical Surgery, Grey's Anatomy flashcards OR Essential Anatomy
- Eat, sleep, and pee when you can... seriously
- "...steel bladder, cast-iron stomach, heart of gold."
- Working with other IMGs is difficult... make the best of the situation
- Ask the CMGs for help when you need it!
- Take each surgeon's personality in stride
- The "perfect med student"... never pimps, never complains, never lies, KNOWS what needs to be done, loves the OR

TheCaseSolutions.com

Elective # & Minima

- 5am-7p
- 3 Med S
- Residen
- +/- 10 p
- 5am - P
- 6am - R
- senior r
- 7am - P
- All ward
- ORs ev

Elective

- 6:30am-

My Summer Schedule...



- Finished SC1 June 16th
- **Elective #1** Hepatobiliary and Pancreatic Oncology @ University of Toronto
 - June 20th-July 1st
- **Elective #2** Trauma Surgery @ University of Manitoba
 - July 4th-30th
- **Elective #3** Solid Organ Transplant @ Icahn School of Medicine at Mount Sinai (Sub-I)
 - August 1st-26th
- **Step 2CK** @ Philadelphia
 - August 27th
- **Elective #4** Acute Care Service @ University of Manitoba
 - August 29th-September 23rd
- **NAC OSCE** @ Ottawa
 - September 17th
- **Medical rotation** @ Beaumont Hospital
 - September 26th-October 21st
- **Elective #4** Pediatric Surgical Oncology @ Tennessee (SSCA)
 - October 24th-November 19th

TheCaseSolutions.com

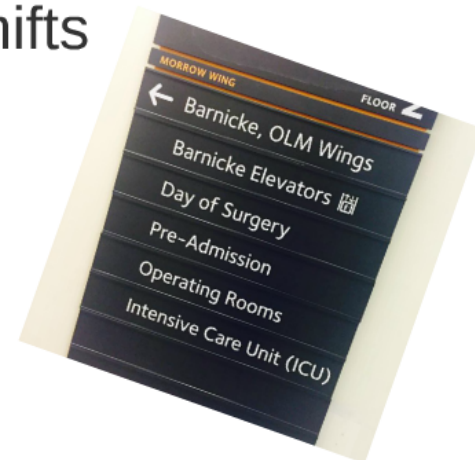
- +
- 3
- C
- 6
- 8
- 3
- C
- 7



Elective #1 - Hepatobiliary Pancreatic Oncology & Minimally-Invasive Surgery @ University of Toronto

- 5am-7pm
- 3 Med Students, 1 Junior, 1 Senior Resident, 1 Attending
- +/- 10 patients on service
- 5am - Pre-rounds
- 6am - Rounds with the junior and senior resident
- 7am - Paper rounds with attending
- All ward work done on morning rounds
- ORs everyday
- 5pm - rounds with entire team
- 1/2 day clinics with 65+ patients
- Teaching in OR
- Endoscopy 1x/week
- 1 in 7 call shifts

TheCaseSolutions.com

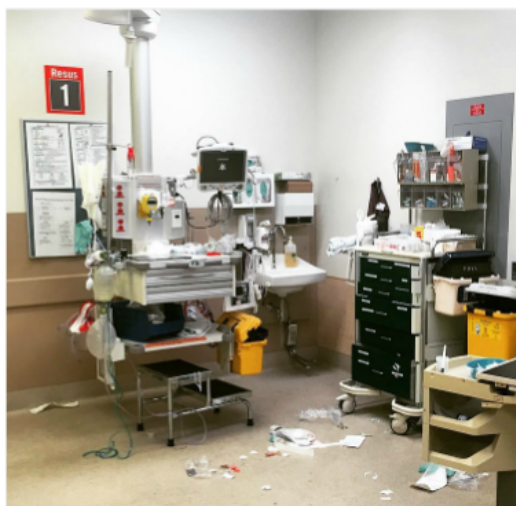


Elective #2 - Trauma Surgery @ University of Manitoba

- 6:30am-6pm
- +/-65 patients on service, +/- off-service patients

Elective #2 - Trauma Surgery @ University of Manitoba

- 6:30am-6pm
- +/-65 patients on service, +/- off-service patients
- 3 Med students, 4 Junior Residents, 2 Senior Residents, 2 PAs
- Call shifts 1 in 3
- 6:30am - Junior residents/Med students pre-round (5-8 pts each)
- 8am - Entire team rounds
- 30+ consults/day
- ORs very sporadic
- 75% time spent in Emergency Room with consults



- Resuscitations
- ATLS training
- Attendings switch every week
- Formal teaching by attendings on ward
- Physically/mentally exhausting
- Hospital politics
- Incredibly rewarding when patients recover

TheCaseSolutions.com

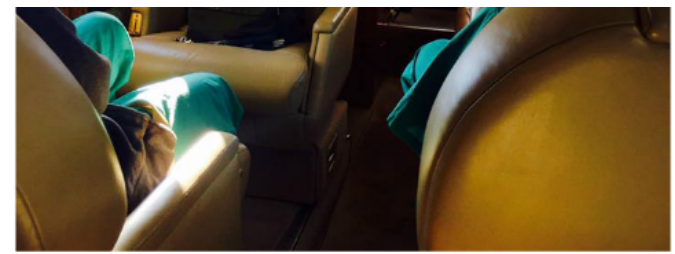
Elective #3 - Solid Organ Transplant Surgery @ Icahn At Mount Sinai

**Studied for
Step 2C**

- 6am-3pm
- +/- 20 patients on service
- 4 Med Students, 2 Junior Residents, 4 Fellows, MANY attendings, army of PAs
- NO WARD WORK
- ORs sporadic & LONG
- On call every night
- VERY active role in procurements/transplants
- Donor/recipient selection committee meetings
- Complication rounds, M&Ms, journal club, research seminars

TheCaseSolutions.com





Elective #4 - Acute Care Service @ University of Manitoba

- 6:30am-5:30pm
- +/- 50 patients on service
- 3 Med students, 3 Junior Residents, 2 Senior Residents
- Attendings switch every week
- 1 in 5 call

**Studied for
NAC OSCE**



- 6:30am - Juniors/Seniors/Med students pre-round
- 8am - Round with attending
- +/- 10 consults /day
- Approx 4 ORs/day
- Nighttime ORs to clear board
- LOTS of ward work
- Formal teaching from retired surgeon 1x/week
- Informal teaching sessions with attendings
- Complications rounds 1x/week, list management 1x/week

TheCaseSolutions.com



SSCA vs Sub-Internship



- **Sub-Internship**

- Must be either Adult Medicine sub-specialty OR Adult Surgery sub-specialty
- Assignments to be completed
- Evaluation form at end
- Exam upon return to RCSI
- NOT the same as a USA "Sub-I"
- NO different than any other elective

- **SSCA**

- Any specialty
- Not marked, just completion
- Can do 2 weeks and 2 weeks on different sub-specialties

NO difference in setting them up for all intensive purposes!



Elective :

- 6am-3
- +/- 20
- 4 Med
- army c
- NO W
- ORs s
- On ca
- VERY
- Donor
- Comp

