

Sawdust, Co.



Thecasesolutions.com

Sawdust, Co.



Thecasesolutions.com

How it Works

Thecasesolutions.com

- Use wood shavings and sawdust
- Soaks up unwanted byproducts of unwashed biodiesel
- Replace sawdust and wood shavings after about 5000 gallons to ensure a purified biodiesel



Cost Thecasesolutions.com

- Saw dust
 - 15 lbs in a 6" column will treat approximately 800-1500 gallons of raw Biodiesel, (1% 00)
 - BD Zorb is a premium fiber based dry wash media that can be used to reduce soap levels in Biodiesel.
- Wood Shavings
 - Cost \$22.50 for 2 pounds.
- Rinse Tank (2)
 - 2.5 Gallon: \$35.99
 - 1500 Gallon: \$869.99
- Filtering Drum (2)
 - 55 gal Ton: \$149.99
- Tubing/Pipes
 - Depends on type



Supplies Thecasesolutions.com

- Dry wash tower
- Unwashed Biodiesel Solution
- Saw Dust from Solid Lumber (not glued or fabricated wood projects)
- Wood Shavings (Preferably Red Oak because of it's high tannic acid content)



Function Thecasesolutions.com

- Cost Efficient
- Eco Friendly
- Sustainable
- Easily Observed
- Maintainable
- Performs well



Function

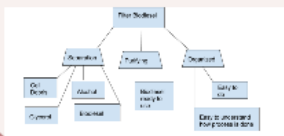
Thecasesolutions.com

- Cost Efficient
- Eco Friendly
- Sustainable
- Easily Observed
- Maintainable
- Performs well

fabrica
project
• Wood S
(Prefer
because
tannic

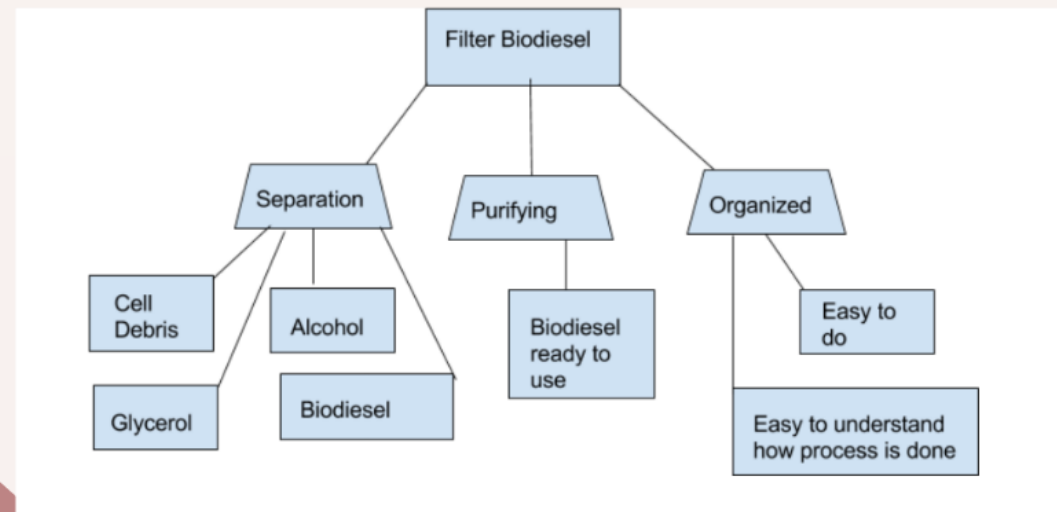
Function Tree

Thecasesolutions.com

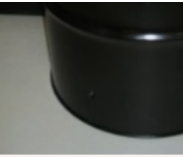


Function Tree

Thecasesolutions.com



- Depends on type



Supplies

Thecasesolutions.com

- Dry wash tower
- Unwashed Biodiesel Solution
- Saw Dust from Solid Lumber (not glued or fabricated wood projects)
- Wood Shavings (Preferably Red Oak because of it's high tannic acid content)



Cost

Thecasesolutions.com

- **Saw dust**
 - 15 lbs in a 6" column will treat approximately 800~1500 gallons of raw Biodiesel. (\$100)
 - BD Zorb is a premium fiber based dry wash media that can be used to reduce soap levels in Biodiesel.
- **Wood Shavings**
 - Cost \$22.50 for 2 pounds.
- **Rinse Tank (2)**
 - 2.5 Gallon \$33.99
 - 1500 Gallon \$869.99
- **Filtering Drum (2)**
 - 55 gallon \$149.99
- **Tubing/Pipes**
 - Depends on type



Why this Method

Thecasesolutions.com

- Home-brewers across the country use this method
- Cheap
- Efficient
- Easy to get materials
- Recycles



Process

Thecasesolutions.com

- Screen is placed in the bottom of tank(window screen over expanded metal).
- The shavings are added and packed in
- Another screen is placed on top.
- Drums are put into the tower and the tubes are hooked up.
- The fuel is on the top, then the two drums with the shavings, then on the bottom is an empty tank where the fuel will end up.

MAX FLOW RATE is about a gallon per minute. Most common is to set up to be a few gallons per hour. Important to note:

- When the biodiesel flows through the drums the soap will eventually form a "cake" that will prevent the biodiesel from flowing through. To fix this a stirring rod can be used to break up the "cake".
- Once the shavings are ineffective they must be replaced. The shavings can be stuffed into an old milk carton and burned in a fireplace. They burn hot and fast. In doing this, just make sure that you let the biodiesel drip dry for a few days.