

LANDMARK FACILITY SOLUTIONS
THECASESOLUTIONS.COM



 **LANDMARKS**
AT KASATSART UNIVERSITY
KAMPHANGSAEN CAMPUS

LANDMARK FACILITY SOLUTIONS
THECASESOLUTIONS.COM

LANDMARK FACILITY SOLUTIONS
THECASESOLUTIONS.COM



LANDMARKS

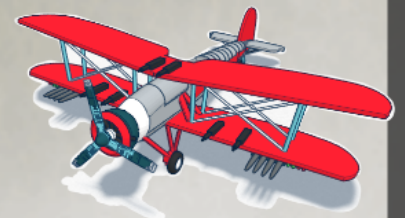
GROUP.4

AT KASATSART UNIVERSITY
KAMPHANGSAEN CAMPUS

INTRODUCTION

Kasetsart University Kamphaeng Saen Campus (KU.KPS.) is an institution of higher education to teach students, to provide academic services to the community, to continue and nourish national arts and culture. KU.KPS is located on an area of around 7,800 rais, and contains a lot of tourist spots which interest and impress both local and foreign visitors. KU.KPS has also sport facilities for those who are interested, for example, 9-hole golf course, tennis court etc. KU.KPS is located on tourist routes to interesting provinces for tourism such as Kanchanaburi, Ratchaburi, Suphanburi and Ayutthaya. In KU.KPS, there are a large number of places for both agriculture and ecological tourism. Some places are complete and others are under development. If these are fully developed, KU.KPS will be potential to enhance Thailand's tourist industry.

This report is intended to depict landmark of KU.KPS according to such saying as "only a picture represents beyond thousand words"



LANDMARK FACILITY SOLUTIONS

THECASESOLUTIONS.COM



LANDMARKS
AT KASATSART UNIVERSITY
KAMPHANGSAEN CAMPUS
GROUP.4



BOTANICAL GARDEN 80TH BIRTHDAY COMMEMORATION PARK (DREAM WORLD)

Mr. Amphol Sana Naring is the Chairman of the Privy Council, opened the park when 12 November 2007 at Kasatsart University Botanical Garden 80th birthday commemoration Park Kamphang Saen campus Nakhon Pathom. The creation, under the approval of the Ministry of Finance, to honor King Bhumibol Adulyadej on the occasion of the 80th birthday of 5 December 2007 so the Treasury Department to coordinate with the Kasatsart University, Nakhon Pathom province, and to make such a public park, botanical gardens, space on the grounds of Kasatsart University Kamphang Saen campus, where areas are approximately 131 acres.

BOTTLE-BRUSH STREET

Kasatsart University Kamphang Saen campus has a specific road to be called bottle-brush road because from the tree, the leaves look like a bottle-brush, most of the people like to walk as a loving way.

INTRODUCTION

Kasatsart University Kamphang Saen Campus (KUSC) is an institution of higher education to teach students, to provide academic services to the community, to continue and flourish national arts and culture. KUSC is located on an area of around 7,000 rai, and contains a lot of tourist spots which interest and attract both local and foreign visitors. KUSC has also special facilities for those who are interested.

For example in field golf course, tennis court etc. KUSC is located on tourist routes to interesting provinces for tourism such as Nakhon Phanom, Ratchaburi, Suphanburi and Nakhon Si Thammaraj. In KUSC, there are a large number of places for both agriculture and ecological tourism. Some places are complete and others are under development. If these are fully developed, KUSC will be potential to enhance Thailand's tourist industry.

This report is intended to decide landmark of KUSC according to such saying as "only a picture represents beyond thousand words".

